

UK Office

Everest Biotech Ltd

Cherwell Innovation Centre
77 Heyford Park
Upper Heyford
Oxfordshire
OX25 5HD
UK

Enquiries:

info@everestbiotech.com

Sales:

sales@everestbiotech.com

Tech support:

support@everestbiotech.com

Tel: +44 (0)1869 238326

www.everestbiotech.com

**Research Use Only. Not for
diagnostic or therapeutic use.**

EB10196 - Goat Anti-EIF2B4 Antibody

Size: 100µg specific antibody in 200µl



Target Protein

Principal Names: DKFZp586J0119, EIF2B, EIF-2B, eIF-2B GDP-GTP exchange factor subunit delta, EIF2Bdelta, eukaryotic translation initiation factor 2B, subunit 4 delta, eukaryotic translation initiation factor 2B, subunit 4 delta, 67kDa, translation initiation facto, EIF2B4

Official Symbol: EIF2B4

Accession Number(s): NP_751945.2; NP_001029288.1; NP_056451.3

Human GeneID(s): [8890](#)

Non-Human GeneID(s): 13667 (mouse), 117019 (rat)

Important Comments: This antibody is expected to recognize all reported isoforms (NP_751945.2; NP_001029288.1; NP_056451.3).

Immunogen

Peptide with sequence C-RKDYGSKVSLFSH, from the internal region of the protein sequence according to NP_751945.2; NP_001029288.1; NP_056451.3.

Please note the [peptide](#) is available for sale.

Purification and Storage

Purified from goat serum by ammonium sulphate precipitation followed by antigen affinity chromatography using the immunizing peptide.

Supplied at 0.5 mg/ml in Tris saline, 0.02% sodium azide, pH7.3 with 0.5% bovine serum albumin.

Aliquot and store at -20°C. Minimize freezing and thawing.

Applications Tested

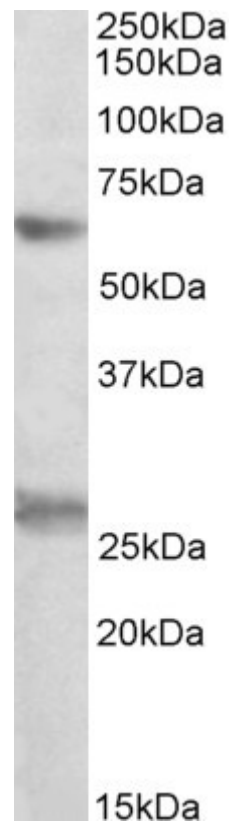
Peptide ELISA: antibody detection limit dilution 1:16000.

Western blot: Approx 60kDa band observed in lysates of cell line K562 (calculated MW of 59.6kDa according to NP_751945.2). Recommended concentration: 0.3-1µg/ml. An additional band of unknown identity was also consistently observed at 26kDa. This band was successfully blocked by incubation with the immunizing peptide. We would appreciate any feedback from people in the field - have any such results been reported with other antibodies/lysates? Have any further splice variants/modified forms been reported?

Species Reactivity

Tested: Human

Expected from sequence similarity: Human, Mouse, Rat, Dog, Cow



EB10196 (0.3 μ g/ml) staining of K562 lysate (35 μ g protein in RIPA buffer). Primary incubation was 1 hour.
Detected by chemiluminescence.