



## International Office

### Everest Biotech Ltd

Vector Laboratories, Inc.  
6737 Mowry Ave  
Newark, CA 94560  
United States

Customer Service:

[customerservice@vectorlabs.com](mailto:customerservice@vectorlabs.com)

Technical Service:

[technical@vectorlabs.com](mailto:technical@vectorlabs.com)

Tel: +1 (800) 227-6666

[www.everestbiotech.com](http://www.everestbiotech.com)

**Research Use Only. Not for  
diagnostic or therapeutic use.**

## EB10524 - Goat Anti-EIF3E Antibody

Size: 100µg specific antibody in 200µl



### Target Protein

**Principal Names:** eIF3-p46, EIF3-P48, EIF3S6, eukaryotic translation initiation factor 3, subunit 6 (48kD), eukaryotic translation initiation factor 3, subunit 6 48kDa, eukaryotic translation initiation factor 3, subunit E, INT6, mammary tumor-associated protein INT, EIF3E

**Official Symbol:** EIF3E

**Accession Number(s):** NP\_001559.1

**Human GeneID(s):** [3646](#)

### Immunogen

Peptide with sequence C-KLNQNSRSEAPN, from the C Terminus of the protein sequence according to NP\_001559.1.

Please note the [peptide](#) is available for sale.

### Purification and Storage

Purified from goat serum by ammonium sulphate precipitation followed by antigen affinity chromatography using the immunizing peptide.

Supplied at 0.5 mg/ml in Tris saline, 0.02% sodium azide, pH7.3 with 0.5% bovine serum albumin.

Aliquot and store at -20°C. Minimize freezing and thawing.

### Applications Tested

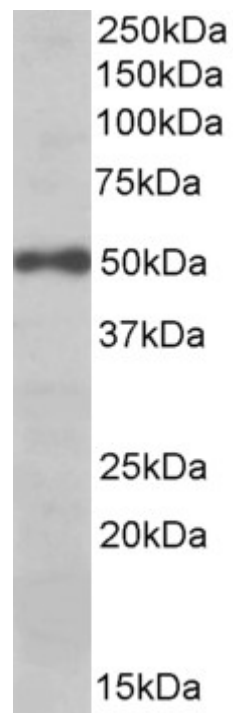
**Peptide ELISA:** antibody detection limit dilution 1:2000.

**Western blot:** Approx 50kDa band observed in lysates of cell line Daudi (calculated MW of 52.2kDa according to NP\_001559.1). Recommended concentration: 0.03-0.1µg/ml.

### Species Reactivity

**Tested:** Human

**Expected from sequence similarity:** Human, Dog, Cow, Pig



EB10524 (0.03 $\mu$ g/ml) staining of Daudi lysate (35 $\mu$ g protein in RIPA buffer). Primary incubation was 1 hour.  
Detected by chemiluminescence.