



UK Office

Everest Biotech Ltd

Cherwell Innovation Centre
77 Heyford Park
Upper Heyford
Oxfordshire
OX25 5HD
UK

Enquiries:

info@everestbiotech.com

Sales:

sales@everestbiotech.com

Tech support:

support@everestbiotech.com

Tel: +44 (0)1869 238326

Fax: +44 (0)1869 238327

US Office

Everest Biotech c/o Abcore

405 Maple Street, Suite A106
Ramona,
CA 92065
USA

Inquiries:

info@everestbiotech.com

Sales:

usasales@everestbiotech.com

Tech support:

support@everestbiotech.com

Tel: 888-320-4628 (toll-free)

Fax: 888-841-9041

www.everestbiotech.com

**Research Use Only. Not for
diagnostic or therapeutic use.**

EB09590 - Goat Anti-eIF5A Antibody

Size: 100µg specific antibody in 200µl



Target Protein

Principal Names: EIF5A, eukaryotic translation initiation factor 5A, EIF-5A, EIF5A1, MGC104255, MGC99547, eIF5AI, OTTHUMP00000128384, uORF A

Official Symbol: EIF5A

Accession Number(s): NP_001137232.1

Human GeneID(s): [1984](#)

Important Comments: Reported variants NP_001137233.1, NP_001961.1 and NP_001137234.1 represent identical protein:

Immunogen

Peptide with sequence C-RPPHRASFLKRLESK, from the internal region (near N Terminus) of the protein sequence according to NP_001137232.1.

Please note the [peptide](#) is available for sale.

Purification and Storage

Purified from goat serum by ammonium sulphate precipitation followed by antigen affinity chromatography using the immunizing peptide.

Supplied at 0.5 mg/ml in Tris saline, 0.02% sodium azide, pH7.3 with 0.5% bovine serum albumin.

Aliquot and store at -20°C. Minimize freezing and thawing.

Applications Tested

Peptide ELISA: antibody detection limit dilution 1:128000.

Western blot: Approx 20kDa band observed in MOLT4 lysates (calculated MW of 20.2kDa according to NP_001137232.1). Recommended concentration: 1-3µg/ml. Primary incubation was 1 hour. This antibody has been successfully used in WB on Human, PMID: 27414022 and 33459432.

IHC: Paraffin embedded Human Spleen, Tonsil and Vessel. Recommended concentration: 3.75µg/ml.

Species Reactivity

Tested: Human

Expected from sequence similarity: Human

Specific References

This antibody has been successfully used in Western blot on Human:

Karina D Pereira, Leticia Tamborlin, Tanes I de Lima, Silvio R Consonni, Leonardo R Silveira, Augusto D Luchessi

Alternative human eIF5A protein isoform plays a critical role in mitochondria
J Cell Biochem. 2021 Jan 18.

PMID: 33459432

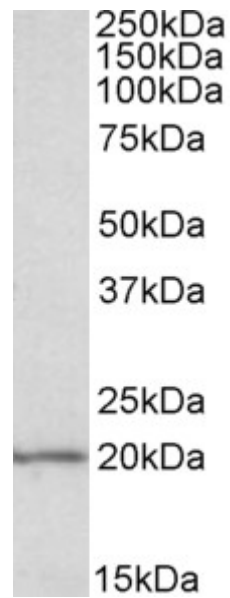
This antibody has been successfully used in Western blot on Human:

Pereira KD, Tamborlin L, Meneguello L, de Proença AR, Almeida IC, Lourenço RF, Luchessi AD.

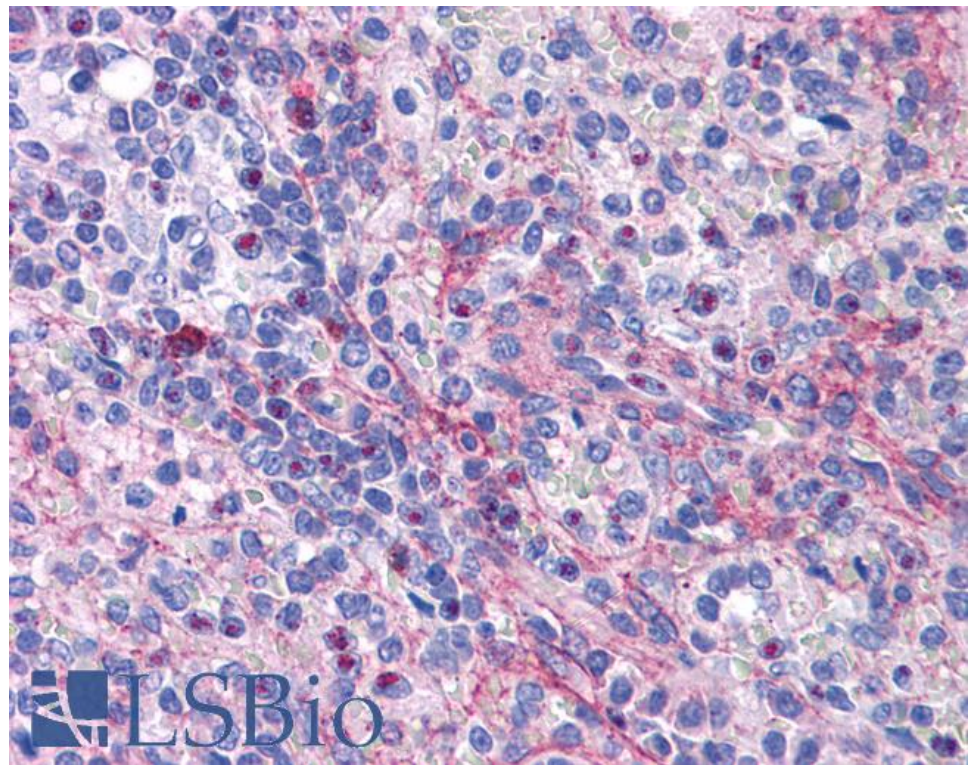
Alternative Start Codon Connects eIF5A to Mitochondria.

J Cell Physiol. 2016 Dec;231(12):2682-9.

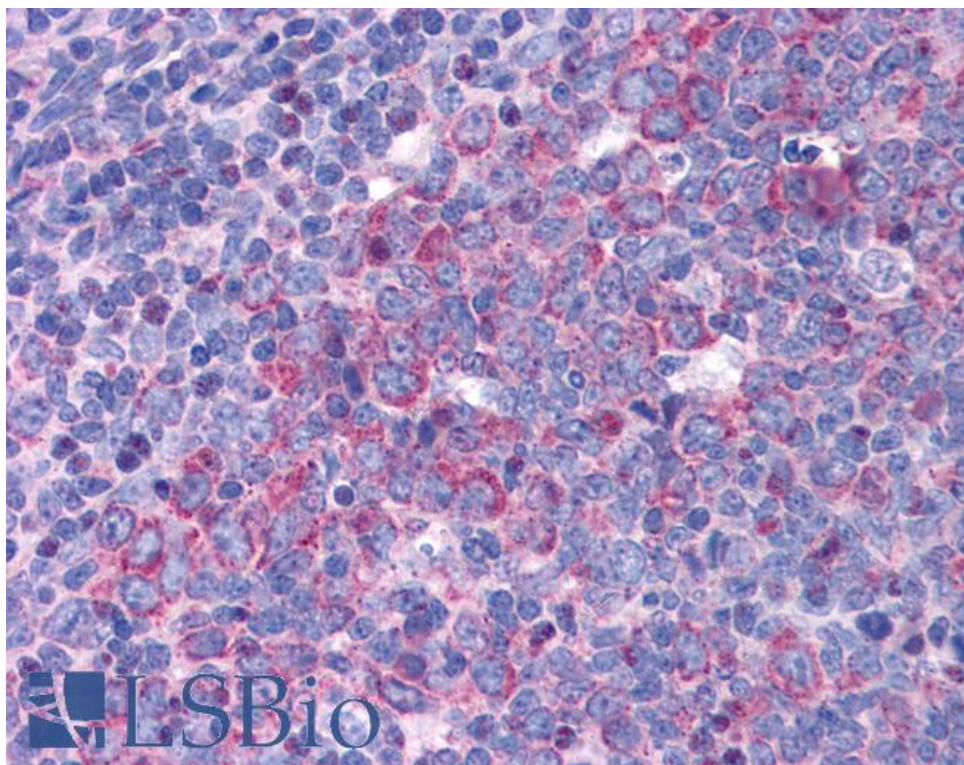
PMID: 27414022



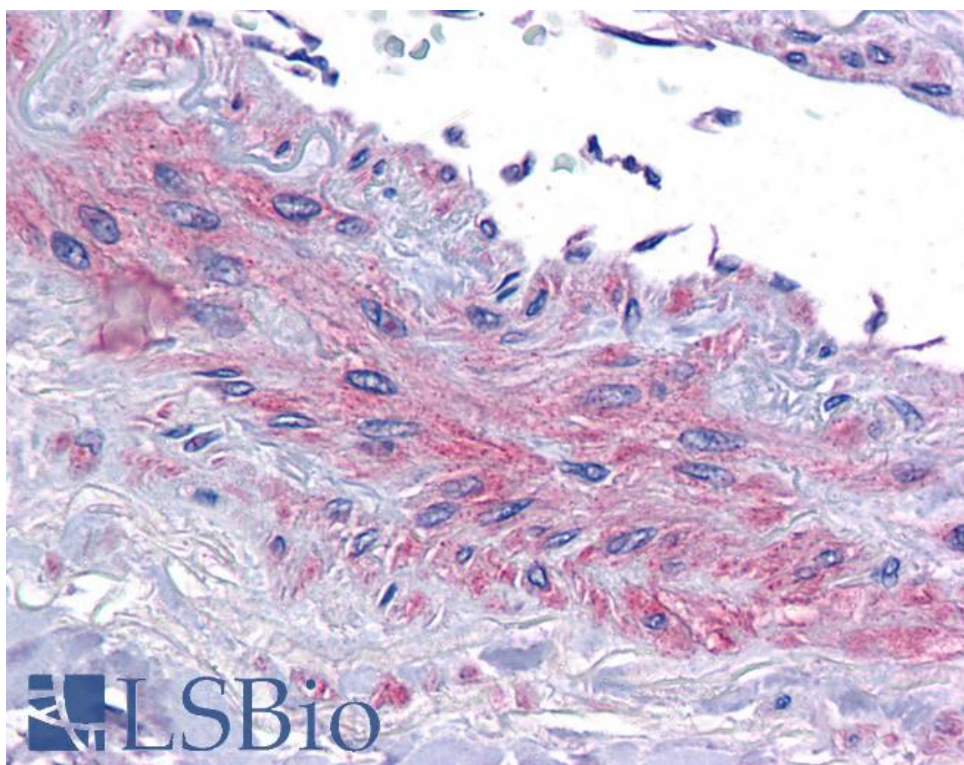
EB09590 (0.1µg/ml) staining of MOLT4 lysate (35µg protein in RIPA buffer). Detected by chemiluminescence.



EB09590 (3.75µg/ml) staining of paraffin embedded Human Spleen. Steamed antigen retrieval with citrate buffer pH 6, AP-staining.



EB09590 (3.75µg/ml) staining of paraffin embedded Human Tonsil. Steamed antigen retrieval with citrate buffer pH 6, AP-staining.



EB09590 (3.75µg/ml) staining of paraffin embedded Human Vessel. Steamed antigen retrieval with citrate buffer pH 6, AP-staining.