

## UK Office

### Everest Biotech Ltd

Cherwell Innovation Centre  
77 Heyford Park  
Upper Heyford  
Oxfordshire  
OX25 5HD  
UK

Enquiries:

[info@everestbiotech.com](mailto:info@everestbiotech.com)

Sales:

[sales@everestbiotech.com](mailto:sales@everestbiotech.com)

Tech support:

[support@everestbiotech.com](mailto:support@everestbiotech.com)

Tel: +44 (0)1869 238326

[www.everestbiotech.com](http://www.everestbiotech.com)

**Research Use Only. Not for  
diagnostic or therapeutic use.**

## EB05528 - Goat Anti-ELF1 Antibody

Size: 100µg specific antibody in 200µl



### Target Protein

**Principal Names:** ELF1, E74-like factor 1 (ets domain transcription factor), OTTHUMP00000018310, ets-related transcription factor Elf-1

**Official Symbol:** ELF1

**Accession Number(s):** NP\_758961.1; NP\_001138825.1

**Human GeneID(s):** [1997](#)

**Non-Human GeneID(s):** 13709 (mouse)

**Important Comments:** This antibody is expected to recognise both reported isoforms.

### Immunogen

Peptide with sequence C-AMKQNELLEPNSF, from the C Terminus of the protein sequence according to NP\_758961.1; NP\_001138825.1.

Please note the [peptide](#) is available for sale.

### Purification and Storage

Purified from goat serum by ammonium sulphate precipitation followed by antigen affinity chromatography using the immunizing peptide.

Supplied at 0.5 mg/ml in Tris saline, 0.02% sodium azide, pH7.3 with 0.5% bovine serum albumin.

Aliquot and store at -20°C. Minimize freezing and thawing.

### Applications Tested

**Peptide ELISA:** antibody detection limit dilution 1:64000.

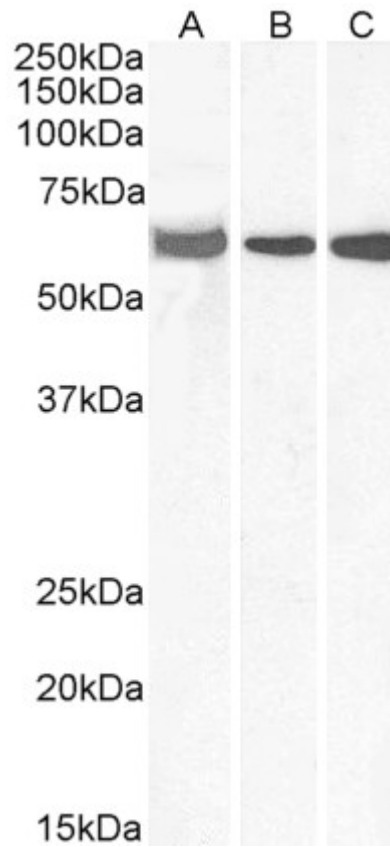
**Western blot:** Approx 65kDa band observed in Human Lymph Node and Tonsil and in Mouse Thymus lysates (calculated MW of 64.9kDa according to Human NP\_001138825.1 and 62.3kDa according to Mouse NP\_001273341.1). Recommended concentration: 0.1-0.3µg/ml. Approx 70kDa band observed in lysates of cell line Jurkat (calculated MW of 67.5kDa according to NP\_758961.1). Recommended concentration: 0.03-0.1µg/ml.

**IHC:** Paraffin embedded Human Thymus. Recommended concentration: 2.5µg/ml.

### Species Reactivity

**Tested:** Human, Mouse

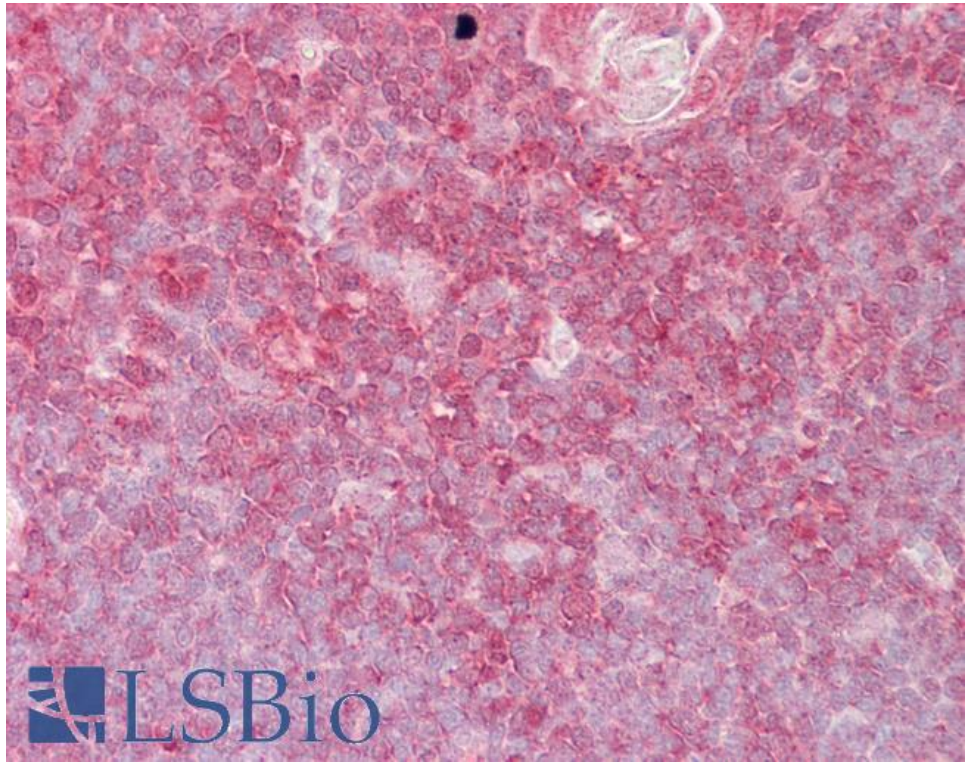
**Expected from sequence similarity:** Human, Mouse



EB05528 (0.3µg/ml) staining of Human Lymph Node (A), Human Tonsil (B) and Mouse Thymus (C) lysates (35µg protein in RIPA buffer). Primary incubation was 1 hour. Detected by chemiluminescence.



EB05528 (0.1µg/ml) staining of Jurkat cell lysate (35µg protein in RIPA buffer). Primary incubation was 1 hour. Detected by chemiluminescence.



EB05528 (2.5µg/ml) staining of paraffin embedded Human Thymus. Steamed antigen retrieval with citrate buffer pH 6, AP-staining.