



## International Office

### Everest Biotech Ltd

Vector Laboratories, Inc.  
6737 Mowry Ave  
Newark, CA 94560  
United States

Customer Service:

[customerservice@vectorlabs.com](mailto:customerservice@vectorlabs.com)

Technical Service:

[technical@vectorlabs.com](mailto:technical@vectorlabs.com)

Tel: +1 (800) 227-6666

[www.everestbiotech.com](http://www.everestbiotech.com)

**Research Use Only. Not for  
diagnostic or therapeutic use.**

## EB05685 - Goat Anti-ELKS / RAB6IP2 Antibody

Size: 100µg specific antibody in 200µl



### Target Protein

**Principal Names:** ERC1, ELKS/RAB6-interacting/CAST family member 1, Cast2, ELKS, KIAA1081, MGC12974, RAB6IP2, RAB6 interacting protein 2, RAB6-interacting protein 2, Rab6-interacting protein 2, FLJ31750, OTTHUMP00000160633

**Official Symbol:** ERC1

**Accession Number(s):** NP\_829883.1; NP\_829884.1

**Human GeneID(s):** [23085](#)

**Non-Human GeneID(s):** 111173 (mouse)

**Important Comments:** This antibody is expected to recognize all reported isoforms (NP\_829883.1; NP\_829884.1).

### Immunogen

Peptide with sequence YGSARSVGKVEPS-C, from the N Terminus of the protein sequence according to NP\_829883.1; NP\_829884.1.

Please note the [peptide](#) is available for sale.

### Purification and Storage

Purified from goat serum by ammonium sulphate precipitation followed by antigen affinity chromatography using the immunizing peptide.

Supplied at 0.5 mg/ml in Tris saline, 0.02% sodium azide, pH7.3 with 0.5% bovine serum albumin.

Aliquot and store at -20°C. Minimize freezing and thawing.

### Applications Tested

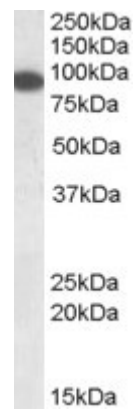
**Peptide ELISA:** antibody detection limit dilution 1:128000.

**Western blot:** Approx. 90kDa band observed in Human Pancreas lysates (calculated MW of 82.0kDa according to NP\_829882.1). Recommended concentration: 0.1-0.3µg/ml.

### Species Reactivity

**Tested:** Human

**Expected from sequence similarity:** Human, Mouse, Rat, Dog, Cow



EB05685 (0.1µg/ml) staining of Human Pancreas lysate (35µg protein in RIPA buffer). Primary incubation was 1 hour. Detected by chemiluminescence.