



UK Office

Everest Biotech Ltd

Cherwell Innovation Centre
77 Heyford Park
Upper Heyford
Oxfordshire
OX25 5HD
UK

Enquiries:

info@everestbiotech.com

Sales:

sales@everestbiotech.com

Tech support:

support@everestbiotech.com

Tel: +44 (0)1869 238326

Fax: +44 (0)1869 238327

US Office

Everest Biotech c/o Abcore

405 Maple Street, Suite A106
Ramona,
CA 92065
USA

Inquiries:

info@everestbiotech.com

Sales:

usasales@everestbiotech.com

Tech support:

support@everestbiotech.com

Tel: 888-320-4628 (toll-free)

Fax: 888-841-9041

www.everestbiotech.com

**Research Use Only. Not for
diagnostic or therapeutic use.**

EB05685 - Goat Anti-ELKS / RAB6IP2 Antibody

Size: 100µg specific antibody in 200µl



Target Protein

Principal Names: ERC1, ELKS/RAB6-interacting/CAST family member 1, Cast2, ELKS, KIAA1081, MGC12974, RAB6IP2, RAB6 interacting protein 2, RAB6-interacting protein 2, Rab6-interacting protein 2, FLJ31750, OTTHUMP00000160633

Official Symbol: ERC1

Accession Number(s): NP_829883.1; NP_829884.1

Human GeneID(s): [23085](#)

Non-Human GeneID(s): 111173 (mouse)

Important Comments: This antibody is expected to recognize all reported isoforms (NP_829883.1; NP_829884.1).

Immunogen

Peptide with sequence YGSARSVGKVEPS-C, from the N Terminus of the protein sequence according to NP_829883.1; NP_829884.1.

Please note the [peptide](#) is available for sale.

Purification and Storage

Purified from goat serum by ammonium sulphate precipitation followed by antigen affinity chromatography using the immunizing peptide.

Supplied at 0.5 mg/ml in Tris saline, 0.02% sodium azide, pH7.3 with 0.5% bovine serum albumin.

Aliquot and store at -20°C. Minimize freezing and thawing.

Applications Tested

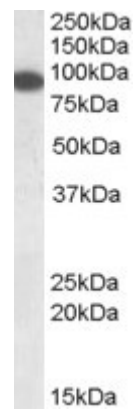
Peptide ELISA: antibody detection limit dilution 1:128000.

Western blot: Approx. 90kDa band observed in Human Pancreas lysates (calculated MW of 82.0kDa according to NP_829882.1). Recommended concentration: 0.1-0.3µg/ml.

Species Reactivity

Tested: Human

Expected from sequence similarity: Human, Mouse, Rat, Dog, Cow



EB05685 (0.1µg/ml) staining of Human Pancreas lysate (35µg protein in RIPA buffer). Primary incubation was 1 hour. Detected by chemiluminescence.