



UK Office

Everest Biotech Ltd

Cherwell Innovation Centre
77 Heyford Park
Upper Heyford
Oxfordshire
OX25 5HD
UK

Enquiries:

info@everestbiotech.com

Sales:

sales@everestbiotech.com

Tech support:

support@everestbiotech.com

Tel: +44 (0)1869 238326

www.everestbiotech.com

**Research Use Only. Not for
diagnostic or therapeutic use.**

EB05297 - Goat Anti-ELMO1 Antibody

Size: 100µg specific antibody in 200µl



Target Protein

Principal Names: ELMO1, engulfment and cell motility 1 (ced-12 homolog, C. elegans), CED12, KIAA0281, ced-12 homolog 1, engulfment and cell motility 1, CED-12, ELMO-1, MGC126406, OTTHUMP00000207056, OTTHUMP00000207060

Official Symbol: ELMO1

Accession Number(s): NP_055615.8; NP_569709.1; NP_001034548.1

Human GeneID(s): [9844](#)

Non-Human GeneID(s): 140580 (mouse)

Important Comments: This antibody is expected to recognise both human isoforms of this protein. NP_569709.1 and NP_001034548.1 represent the same isoform.

Immunogen

Peptide with sequence PKEPSNYDFVYDCN, from the C Terminus of the protein sequence according to NP_055615.8; NP_569709.1; NP_001034548.1.

Please note the [peptide](#) is available for sale.

Purification and Storage

Purified from goat serum by ammonium sulphate precipitation followed by antigen affinity chromatography using the immunizing peptide.

Supplied at 0.5 mg/ml in Tris saline, 0.02% sodium azide, pH7.3 with 0.5% bovine serum albumin.

Aliquot and store at -20°C. Minimize freezing and thawing.

Applications Tested

Peptide ELISA: antibody detection limit dilution 1:128000.

Western blot: Approx 83kDa band observed in Human Brain (Frontal Cortex) lysates, in Mouse and Rat Brain lysates and in lysates of cell line Jurkat (calculated MW of 83.8kDa according to NP_055615.8). Recommended concentration: 0.1-0.3µg/ml. Primary incubation was 1 hour.

Immunoprecipitation: A customer found positive results in IP on Human promyelocytic leukemia cells (HL60). **This data is from a previous batch, not on sale.**

Species Reactivity

Tested: Human, Mouse, Rat

Expected from sequence similarity: Human, Mouse, Rat, Dog, Cow, Zebrafish

Specific References

This antibody (previous batch) has been successfully used in Western blot in Zebrafish:

Krishna Rakesh Sharma, Karl Heckler, Sandra J. Stoll, Jan-Luuk Hillebrands, Katharina Kynast, Esther Herpel, Stefan Porubsky, Marlies Elger, Boris Hadaschik, Karen Bieback, Hans-Peter Hammes, Peter P. Nawroth, and Jens Kroll
ELMO1 protects renal structure and ultrafiltration in kidney development and under diabetic conditions
Sci Rep. 2016 Nov 16;6:37172
PMID: 27849017

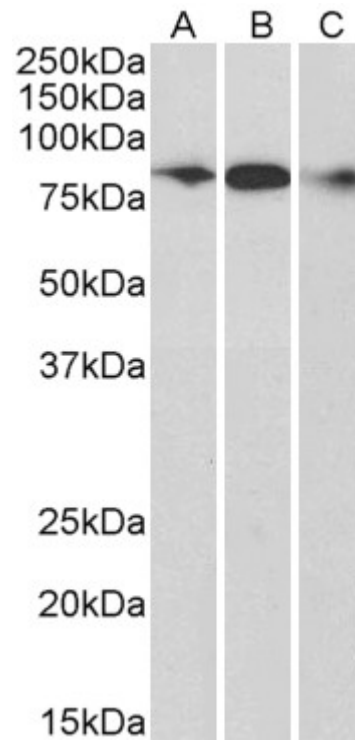
This antibody (previous batch) has been successfully used in Western blot in Human:

Schäker K, Bartsch S, Patry C, Stoll SJ, Hillebrands JL, Wieland T, Kroll J.

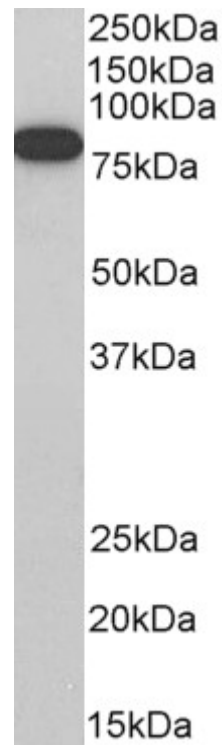
The bipartite rac1 Guanine nucleotide exchange factor engulfment and cell motility 1/dedicator of cy
(elmo1/dock180) protects endothelial cells from apoptosis in blood vessel development.
J Biol Chem. 2015 Mar 6;290(10):6408
PMID: 25586182

**This antibody (previous batch) has been successfully used in Western blot and IP
in Zebrafish:**

Epting D, Wendik B, Bennewitz K, Dietz CT, Driever W, Kroll J.
The Rac1 regulator ELMO1 controls vascular morphogenesis in zebrafish.
Circ Res. 2010 Jul 9;107(1):45-55.
PMID: 20466982



EB05297 (0.3 μ g/ml) staining of Human Frontal Cortex (A), Mouse (B) and Rat (C) Brain lysate (35 μ g protein in RIPA buffer). Detected by chemiluminescence.



EB05297 (0.3 μ g/ml) staining of Jurkat cell lysate (35 μ g protein in RIPA buffer). Detected by chemiluminescence.