



## UK Office

### Everest Biotech Ltd

Cherwell Innovation Centre  
77 Heyford Park  
Upper Heyford  
Oxfordshire  
OX25 5HD  
UK

Enquiries:

[info@everestbiotech.com](mailto:info@everestbiotech.com)

Sales:

[sales@everestbiotech.com](mailto:sales@everestbiotech.com)

Tech support:

[support@everestbiotech.com](mailto:support@everestbiotech.com)

Tel: +44 (0)1869 238326

Fax: +44 (0)1869 238327

## US Office

### Everest Biotech c/o Abcore

405 Maple Street, Suite A106  
Ramona,  
CA 92065  
USA

Inquiries:

[info@everestbiotech.com](mailto:info@everestbiotech.com)

Sales:

[usasales@everestbiotech.com](mailto:usasales@everestbiotech.com)

Tech support:

[support@everestbiotech.com](mailto:support@everestbiotech.com)

Tel: 888-320-4628 (toll-free)

Fax: 888-841-9041

[www.everestbiotech.com](http://www.everestbiotech.com)

**Research Use Only. Not for  
diagnostic or therapeutic use.**

## EB05305 - Goat Anti-ELMO2 Antibody

Size: 100µg specific antibody in 200µl



### Target Protein

**Principal Names:** ELMO2, engulfment and cell motility 2 (ced-12 homolog, C. elegans), CED12, FLJ11656, KIAA1834, ced-12 homolog 2, PH domain protein CED12A, engulfment and cell motility 2, engulfment and cell motility 2, RP11-394O2.2, CED-12, ELMO-2

**Official Symbol:** ELMO2

**Accession Number(s):** NP\_877496.1; NP\_573403.1; NP\_001305182.1

**Human GeneID(s):** [63916](#)

**Non-Human GeneID(s):** 140579 (mouse)

### Immunogen

Peptide with sequence C-PKEPSSYDFVYHYG, from the C Terminus of the protein sequence according to NP\_877496.1; NP\_573403.1; NP\_001305182.1.

Please note the [peptide](#) is available for sale.

### Purification and Storage

Purified from goat serum by ammonium sulphate precipitation followed by antigen affinity chromatography using the immunizing peptide.

Supplied at 0.5 mg/ml in Tris saline, 0.02% sodium azide, pH7.3 with 0.5% bovine serum albumin.

Aliquot and store at -20°C. Minimize freezing and thawing.

### Applications Tested

**Peptide ELISA:** antibody detection limit dilution 1:32000.

**Western blot:** Approx 80kDa band observed in lysates of cell lines HEK293, Jurkat, RAW264.7 and in Human Cerebellum and Rat Brain lysates (calculated MW of 82.6kDa according to Human NP\_573403.1 and NP\_877496.1 and Mouse NP\_525026.2, and 83.7kDa according to Rat NP\_001128427.1). Recommended concentration: 0.3-1µg/ml.

**IHC:** In paraffin embedded Human Prostate shows pixulated staining in the cytoplasm of stroma cells. Recommended concentration: 3-6µg/ml.

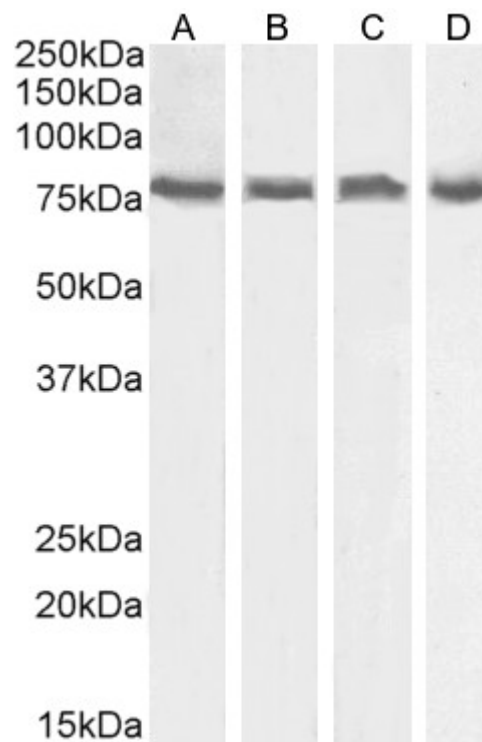
**Immunofluorescence:** Strong expression of the protein seen in A549 and U2OS cells. Recommended concentration: 10µg/ml.

**Flow Cytometry:** Flow cytometric analysis of A549 cells. Recommended concentration: 10ug/ml.

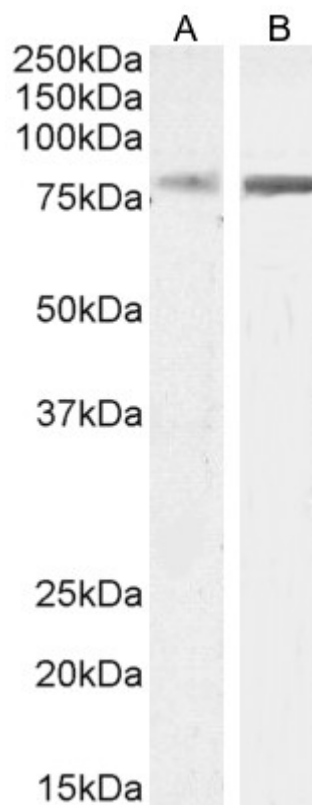
### Species Reactivity

**Tested:** Human, Mouse, Rat

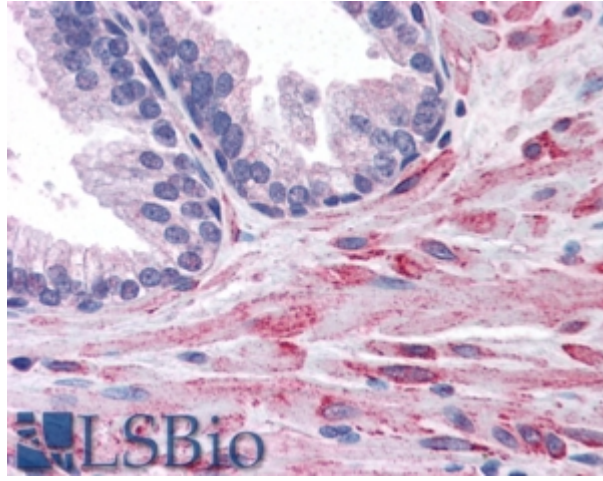
**Expected from sequence similarity:** Human, Mouse, Rat, Dog, Pig, Cow



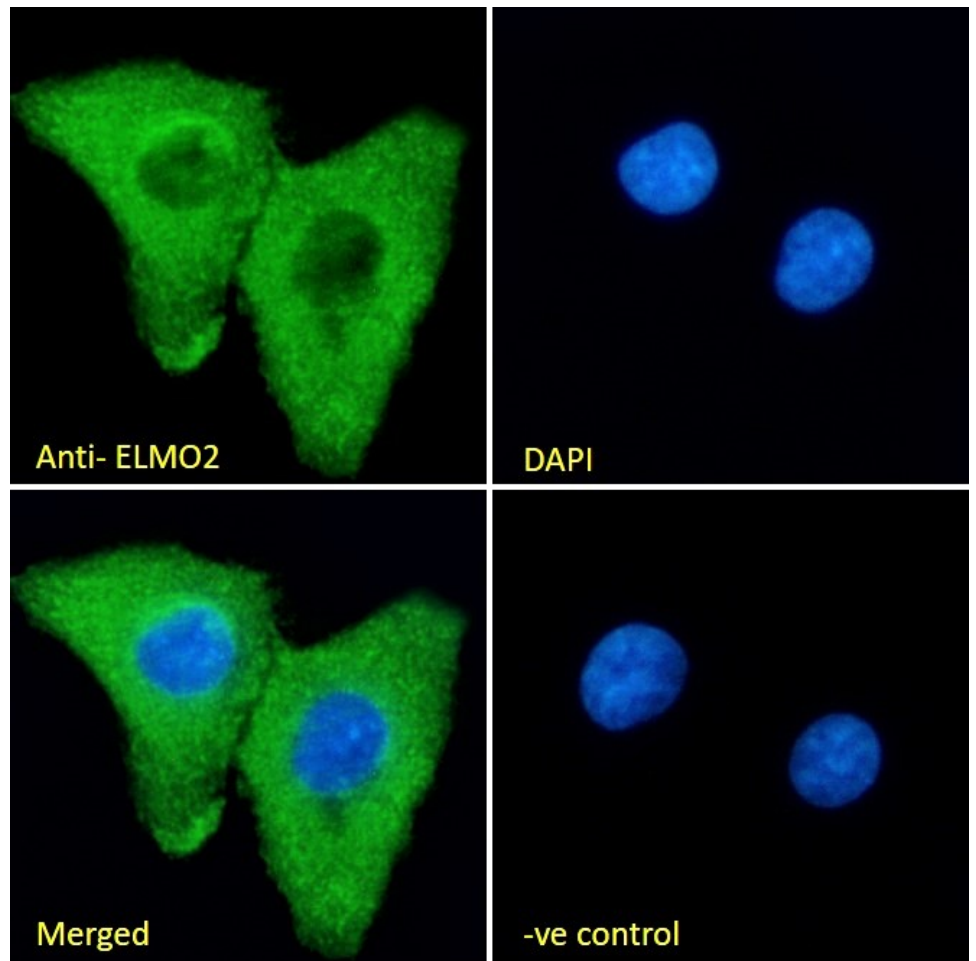
EB05305 (0.5µg/ml) staining of Jurkat (A) , HEK293 (B), RAW264.7 (C) and KNRK (D) cell lysate (35µg protein in RIPA buffer). Detected by chemiluminescence.



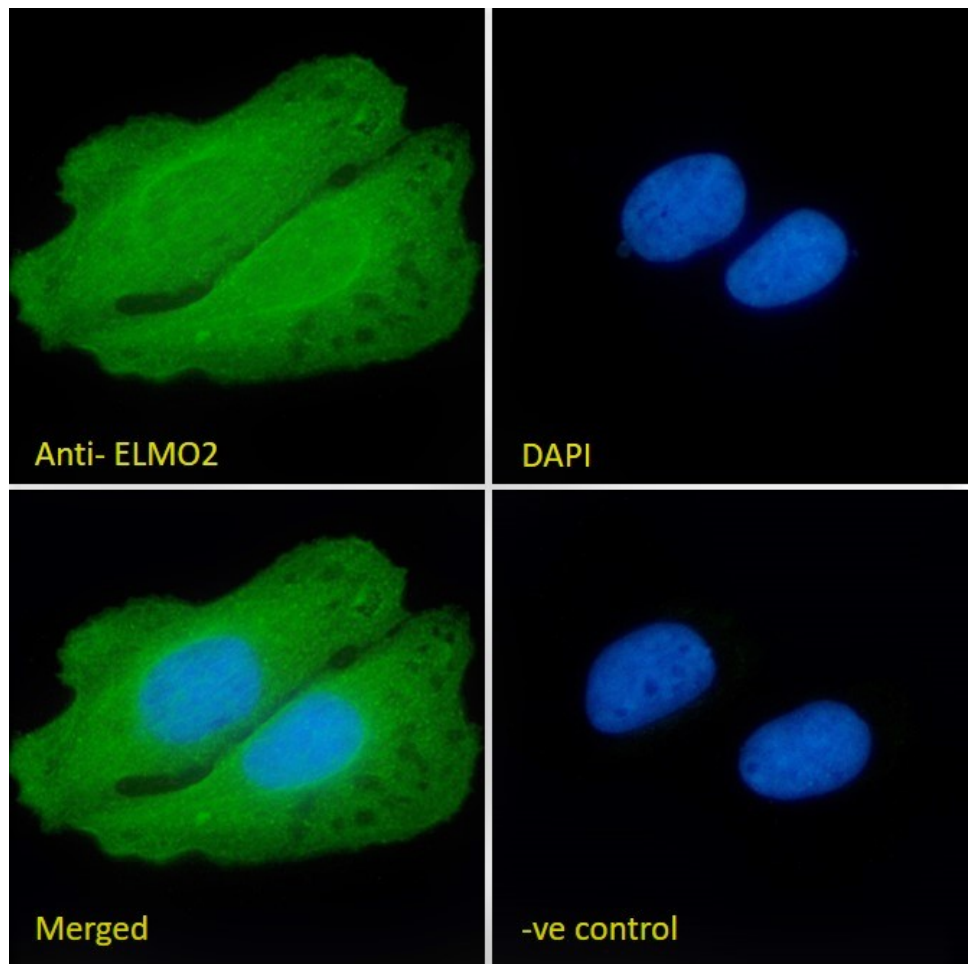
EB05305 (0.5µg/ml) staining of Human Cerebellum (A) and Rat Brain (B) lysate (35µg protein in RIPA buffer). Detected by chemiluminescence.



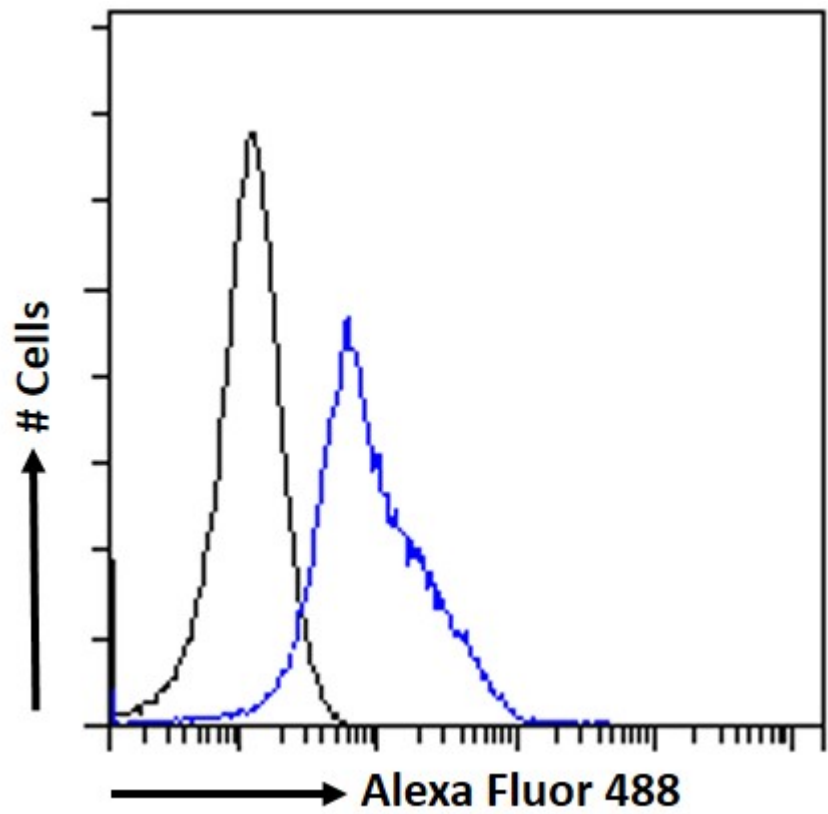
EB05305 (3.8µg/ml) staining of paraffin embedded Human Prostate. Steamed antigen retrieval with citrate buffer pH 6, AP-staining.



EB05305 Immunofluorescence analysis of paraformaldehyde fixed A549 cells, permeabilized with 0.15% Triton. Primary incubation 1hr (10ug/ml) followed by Alexa Fluor 488 secondary antibody (2ug/ml), showing cytoplasmic staining. The nuclear stain is DAPI (blue). Negative control: Unimmunized goat IgG (10ug/ml) followed by Alexa Fluor 488 secondary antibody (2ug/ml).



EB05305 Immunofluorescence analysis of paraformaldehyde fixed U2OS cells, permeabilized with 0.15% Triton. Primary incubation 1hr (10ug/ml) followed by Alexa Fluor 488 secondary antibody (2ug/ml), showing cytoplasmic and nuclear staining. The nuclear stain is DAPI (blue). Negative control: Unimmunized goat IgG (10ug/ml) followed by Alexa Fluor 488 secondary antibody (2ug/ml).



EB05305 Flow cytometric analysis of paraformaldehyde fixed A549 cells (blue line), permeabilized with 0.5% Triton. Primary incubation 1hr (10ug/ml) followed by Alexa Fluor 488 secondary antibody (1ug/ml). IgG control: Unimmunized goat IgG (black line) followed by Alexa Fluor 488 secondary antibody.