



## UK Office

### Everest Biotech Ltd

Cherwell Innovation Centre  
77 Heyford Park  
Upper Heyford  
Oxfordshire  
OX25 5HD  
UK

Enquiries:

[info@everestbiotech.com](mailto:info@everestbiotech.com)

Sales:

[sales@everestbiotech.com](mailto:sales@everestbiotech.com)

Tech support:

[support@everestbiotech.com](mailto:support@everestbiotech.com)

Tel: +44 (0)1869 238326

[www.everestbiotech.com](http://www.everestbiotech.com)

**Research Use Only. Not for  
diagnostic or therapeutic use.**

## EB05295 - Goat Anti-ELMO3 Antibody

Size: 100µg specific antibody in 200µl



### Target Protein

**Principal Names:** ELMO3, engulfment and cell motility 3 (ced-12 homolog, C. elegans), CED12, FLJ13824, ced-12 homolog 3, engulfment and cell motility 3, CED-12, ELMO-3

**Official Symbol:** ELMO3

**Accession Number(s):** NP\_078988.2

**Human GeneID(s):** [79767](#)

### Immunogen

Peptide with sequence TNFNFCYDCSIAEP, from the C Terminus of the protein sequence according to NP\_078988.2.

Please note the [peptide](#) is available for sale.

### Purification and Storage

Purified from goat serum by ammonium sulphate precipitation followed by antigen affinity chromatography using the immunizing peptide.

Supplied at 0.5 mg/ml in Tris saline, 0.02% sodium azide, pH7.3 with 0.5% bovine serum albumin.

Aliquot and store at -20°C. Minimize freezing and thawing.

### Applications Tested

**Peptide ELISA:** antibody detection limit dilution 1:16000.

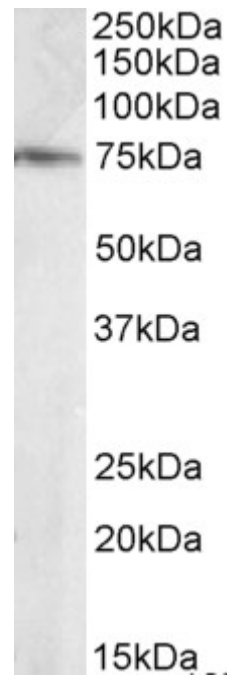
**Western blot:** Approx 75kDa band observed in Human Brain (Hippocampus) lysates (calculated MW of 70.0kDa according to NP\_078988.2). Recommended concentration: 0.1-0.3µg/ml.

**IHC:** In paraffin embedded Human Prostate shows vesiculate staining in the cytoplasm of secretory cells. Recommended concentration, 5-10µg/ml.

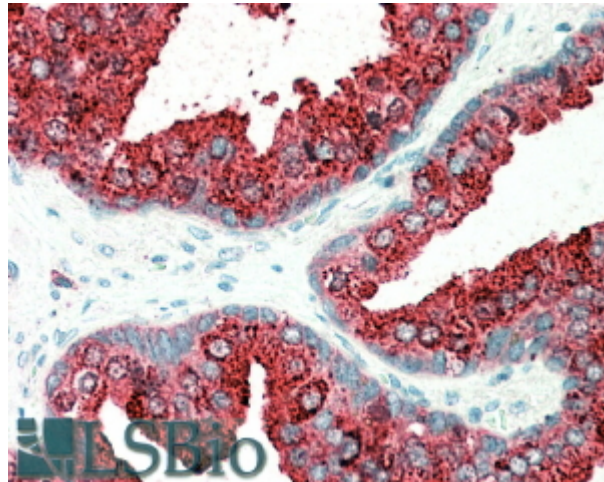
### Species Reactivity

**Tested:** Human

**Expected from sequence similarity:** Human, Dog



EB05295 staining (0.1  $\mu\text{g}/\text{ml}$ ) of Human Brain (Hippocampus) lysate (RIPA buffer, 35  $\mu\text{g}$  total protein per lane). Primary incubated for 1 hour. Detected by chemiluminescence.



EB05295 (5  $\mu\text{g}/\text{ml}$ ) staining of paraffin embedded Human Prostate. Steamed antigen retrieval with citrate buffer pH 6, AP-staining.