



## UK Office

### Everest Biotech Ltd

Cherwell Innovation Centre  
77 Heyford Park  
Upper Heyford  
Oxfordshire  
OX25 5HD  
UK

Enquiries:

[info@everestbiotech.com](mailto:info@everestbiotech.com)

Sales:

[sales@everestbiotech.com](mailto:sales@everestbiotech.com)

Tech support:

[support@everestbiotech.com](mailto:support@everestbiotech.com)

Tel: +44 (0)1869 238326

Fax: +44 (0)1869 238327

## US Office

### Everest Biotech c/o Abcore

405 Maple Street, Suite A106  
Ramona,  
CA 92065  
USA

Inquiries:

[info@everestbiotech.com](mailto:info@everestbiotech.com)

Sales:

[usasales@everestbiotech.com](mailto:usasales@everestbiotech.com)

Tech support:

[support@everestbiotech.com](mailto:support@everestbiotech.com)

Tel: 888-320-4628 (toll-free)

Fax: 888-841-9041

[www.everestbiotech.com](http://www.everestbiotech.com)

**Research Use Only. Not for  
diagnostic or therapeutic use.**

## EB11784 - Goat Anti-ENC1 Antibody

Size: 100µg specific antibody in 200µl



### Target Protein

**Principal Names:** CCL28, ectodermal-neural cortex (with BTB-like domain), ectodermal-neural cortex 1 (with BTB-like domain), ectoderm-neural cortex protein 1, ENC1, ENC-1, FLJ39259, kelch-like 35, kelch-like 37, kelch-like protein 37, KLHL35, KLHL37, NRPB, nuclear matrix protein NRP/B, nuclear restricted protein, BTB domain-like (brain), OTTHUMP00000128235, OTTHUMP00000222054, p53-induced gene 10 protein, PIG10, TP53I10, tumor protein p53 inducible protein 10

**Official Symbol:** ENC1

**Accession Number(s):** NP\_003624.1; NP\_001243505.1

**Human GeneID(s):** [8507](#)

**Non-Human GeneID(s):** 13803 (mouse), 294674 (rat)

**Important Comments:** This antibody is expected to recognize both reported isoforms (NP\_003624.1; NP\_001243505.1). Reported variants represent identical protein: NP\_001243503.1, NP\_001243504.1, NP\_003624.1.

### Immunogen

Peptide with sequence TSVSHDKLPKVQC, from the internal region of the protein sequence according to NP\_003624.1; NP\_001243505.1 .

Please note the [peptide](#) is available for sale.

### Purification and Storage

Purified from goat serum by ammonium sulphate precipitation followed by antigen affinity chromatography using the immunizing peptide.

Supplied at 0.5 mg/ml in Tris saline, 0.02% sodium azide, pH7.3 with 0.5% bovine serum albumin.

Aliquot and store at -20°C. Minimize freezing and thawing.

### Applications Tested

**Peptide ELISA:** antibody detection limit dilution 1:128000.

**Western blot:** Approx 70kDa band observed in Rat Ovary lysates (calculated MW of 66.1kDa according to Rat NP\_001003401.1. Recommended concentration: 1-3µg/ml.

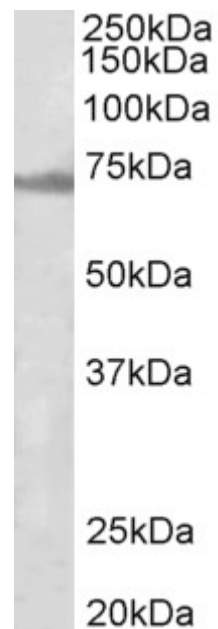
Primary incubation was 1 hour. Preliminary testing was unsuccessful on Mouse Brain for this particular batch.

**IHC:** Paraffin embedded Human Adrenal Gland. Recommended concentration: 5µg/ml.

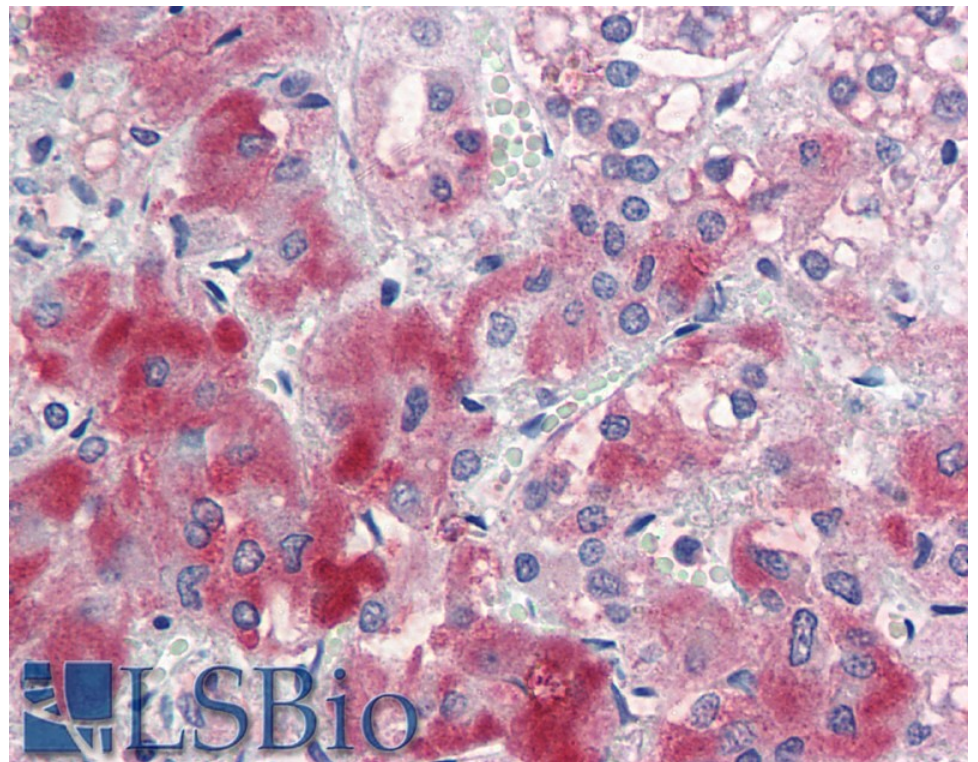
### Species Reactivity

**Tested:** Rat, Human

**Expected from sequence similarity:** Human, Mouse, Rat, Dog, Pig, Cow



EB11784 (1µg/ml) staining of Rat Ovary lysate (35µg protein in RIPA buffer). Detected by chemiluminescence.



EB11784 (5µg/ml) staining of paraffin embedded Human Adrenal Gland. Steamed antigen retrieval with citrate buffer pH 6, AP-staining.