



## UK Office

### Everest Biotech Ltd

Cherwell Innovation Centre  
77 Heyford Park  
Upper Heyford  
Oxfordshire  
OX25 5HD  
UK

Enquiries:

[info@everestbiotech.com](mailto:info@everestbiotech.com)

Sales:

[sales@everestbiotech.com](mailto:sales@everestbiotech.com)

Tech support:

[support@everestbiotech.com](mailto:support@everestbiotech.com)

Tel: +44 (0)1869 238326

[www.everestbiotech.com](http://www.everestbiotech.com)

**Research Use Only. Not for  
diagnostic or therapeutic use.**

## EB08961 - Goat Anti-Endothelial lipase Antibody

Size: 100µg specific antibody in 200µl



### Target Protein

**Principal Names:** endothelial lipase, lipase, endothelial, LIPG, EDL, EL, PRO719, endothelial cell-derived lipase, lipoprotein lipase H

**Official Symbol:** LIPG

**Accession Number(s):** NP\_006024.1

**Human GeneID(s):** [9388](#)

### Immunogen

Peptide with sequence C-RFNLRTSKDPEHEG, from the internal region of the protein sequence according to NP\_006024.1.

Please note the [peptide](#) is available for sale.

### Purification and Storage

Purified from goat serum by ammonium sulphate precipitation followed by antigen affinity chromatography using the immunizing peptide.

Supplied at 0.5 mg/ml in Tris saline, 0.02% sodium azide, pH7.3 with 0.5% bovine serum albumin.

Aliquot and store at -20°C. Minimize freezing and thawing.

### Applications Tested

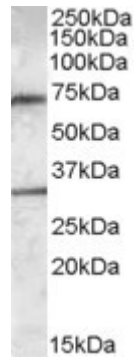
**Peptide ELISA:** antibody detection limit dilution 1:16000.

**Western blot:** Approx. 70kDa band observed in Human Liver lysates (calculated MW of 56.8kDa according to NP\_006024.1). The observed molecular weight corresponds to earlier findings in literature with different antibodies (Gauster et al, J Clin Endocrinol Metab. 2007 Jun;92(6):2256-63. Epub 2007 Mar 13.; PMID: 17356047). Recommended concentration: 0.3-1µg/ml. An additional band of unknown identity was also consistently observed at 30kDa. This band was successfully blocked by incubation with the immunising peptide. We would appreciate any feedback from people in the field - have any such results been reported with other antibodies/lysates? Have any further splice variants/modified forms been reported?

### Species Reactivity

**Tested:** Human

**Expected from sequence similarity:** Human



EB08961 (0.3 $\mu$ g/ml) staining of Human Liver lysate (35 $\mu$ g protein in RIPA buffer). Primary incubation was 1 hour.  
Detected by chemiluminescence.