



International Office

Everest Biotech Ltd

Vector Laboratories, Inc.
6737 Mowry Ave
Newark, CA 94560
United States

Customer Service:

customerservice@vectorlabs.com

Technical Service:

technical@vectorlabs.com

Tel: +1 (800) 227-6666

www.everestbiotech.com

**Research Use Only. Not for
diagnostic or therapeutic use.**

EB08973 - Goat Anti-ENT1 Antibody

Size: 100µg specific antibody in 200µl



Target Protein

Principal Names: SLC29A1, solute carrier family 29 (nucleoside transporters), member 1, ENT1, MGC1465, MGC3778, equilibrative nitrobenzylmercaptopurine riboside (NBMPR)-sensitive nucleoside transporter, equilibrative nucleoside transporter 1, nucleoside transporter, es-type, solute carrier family 29, member 1

Official Symbol: SLC29A1

Accession Number(s): NP_001071643.1

Human GeneID(s): [2030](#)

Important Comments: Reported variants represent identical protein: NP_001071642.1, NP_001071645.1, NP_001071644.1, NP_004946.1, NP_001071643.1

Immunogen

Peptide with sequence TSHQPQDRYKAVW-C, from the N Terminus of the protein sequence according to NP_001071643.1.

Please note the [peptide](#) is available for sale.

Purification and Storage

Purified from goat serum by ammonium sulphate precipitation followed by antigen affinity chromatography using the immunizing peptide.

Supplied at 0.5 mg/ml in Tris saline, 0.02% sodium azide, pH7.3 with 0.5% bovine serum albumin.

Aliquot and store at -20°C. Minimize freezing and thawing.

Applications Tested

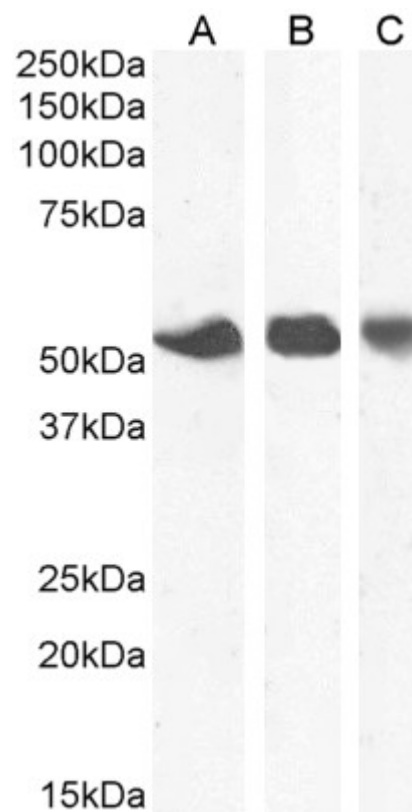
Peptide ELISA: antibody detection limit dilution 1:4000.

Western blot: Approx 50-55kDa band observed in Human Placenta, Spleen and Breast lysates (calculated MW of 50.2kDa according to NP_001071643.1). Recommended concentration: 0.3-1µg/ml. Primary incubation 1 hour at room temperature.

Species Reactivity

Tested: Human

Expected from sequence similarity: Human, Mouse, Rat, Dog, Cow



EB08973 (1 µg/ml) staining of Human Breast (A), Placenta (B) and Spleen (C) lysate. (35 µg protein in RIPA buffer). Detected by chemiluminescence.