



## UK Office

### Everest Biotech Ltd

Cherwell Innovation Centre  
77 Heyford Park  
Upper Heyford  
Oxfordshire  
OX25 5HD  
UK

Enquiries:

[info@everestbiotech.com](mailto:info@everestbiotech.com)

Sales:

[sales@everestbiotech.com](mailto:sales@everestbiotech.com)

Tech support:

[support@everestbiotech.com](mailto:support@everestbiotech.com)

Tel: +44 (0)1869 238326

[www.everestbiotech.com](http://www.everestbiotech.com)

**Research Use Only. Not for  
diagnostic or therapeutic use.**

## EB08135 - Goat Anti-EPB41L2 / 4.1G (aa 593 to 604) Antibody

Size: 100µg specific antibody in 200µl



### Target Protein

**Principal Names:** EPB41L2, 4.1-G, erythrocyte membrane protein band 4.1-like 2, RP3-324N14.1, DKFZp781D1972, DKFZp781H1755, OTTHUMP00000040262, erythrocyte membrane protein band 4.1 like-protein 2

**Official Symbol:** EPB41L2

**Accession Number(s):** NP\_001422.1; NP\_001129026.1; NP\_001186317.1; NP\_001239589.1; NP\_001337228.1; NP\_001337230.1; NP\_001337232.1; NP\_001337233.1; NP\_001337236.1; NP\_001337243.1; NP\_001337249.1

**Human GeneID(s):** [2037](#)

**Important Comments:** This antibody is reported to recognise all isoforms NP\_001422.1 (iso a), NP\_001129026.1 (iso b), NP\_001186317.1 (iso c), NP\_001239589.1 (iso d), NP\_001337228.1 (iso e), NP\_001337230.1 (iso f), NP\_001337232.1 (iso g), NP\_001337233.1 (iso h), NP\_001337236.1 (iso i), NP\_001337243.1 (iso j), NP\_001337249.1 (iso k).

### Immunogen

Peptide with sequence C-RREVRSPKAPH, from the internal region of the protein sequence according to NP\_001422.1; NP\_001129026.1; NP\_001186317.1; NP\_001239589.1; NP\_001337228.1; NP\_001337230.1; NP\_001337232.1; NP\_001337233.1; NP\_001337236.1; NP\_001337243.1; NP\_001337249.1.

Please note the [peptide](#) is available for sale.

### Purification and Storage

Purified from goat serum by ammonium sulphate precipitation followed by antigen affinity chromatography using the immunizing peptide.

Supplied at 0.5 mg/ml in Tris saline, 0.02% sodium azide, pH7.3 with 0.5% bovine serum albumin.

Aliquot and store at -20°C. Minimize freezing and thawing.

### Applications Tested

**Peptide ELISA:** antibody detection limit dilution 1:32000.

**Western blot:** Preliminary testing showed bands at approx 110+40kDa in Human Cerebellum lysates after 0.1µg/ml antibody staining (calculated MW of 113kDa according to NP\_001422.1 These bands were successfully blocked by incubation with the immunizing peptide. Primary incubation 1 hour at room temperature.

**IHC:** Paraffin embedded Human Uterus and Colon. Recommended concentration: 2.5µg/ml.

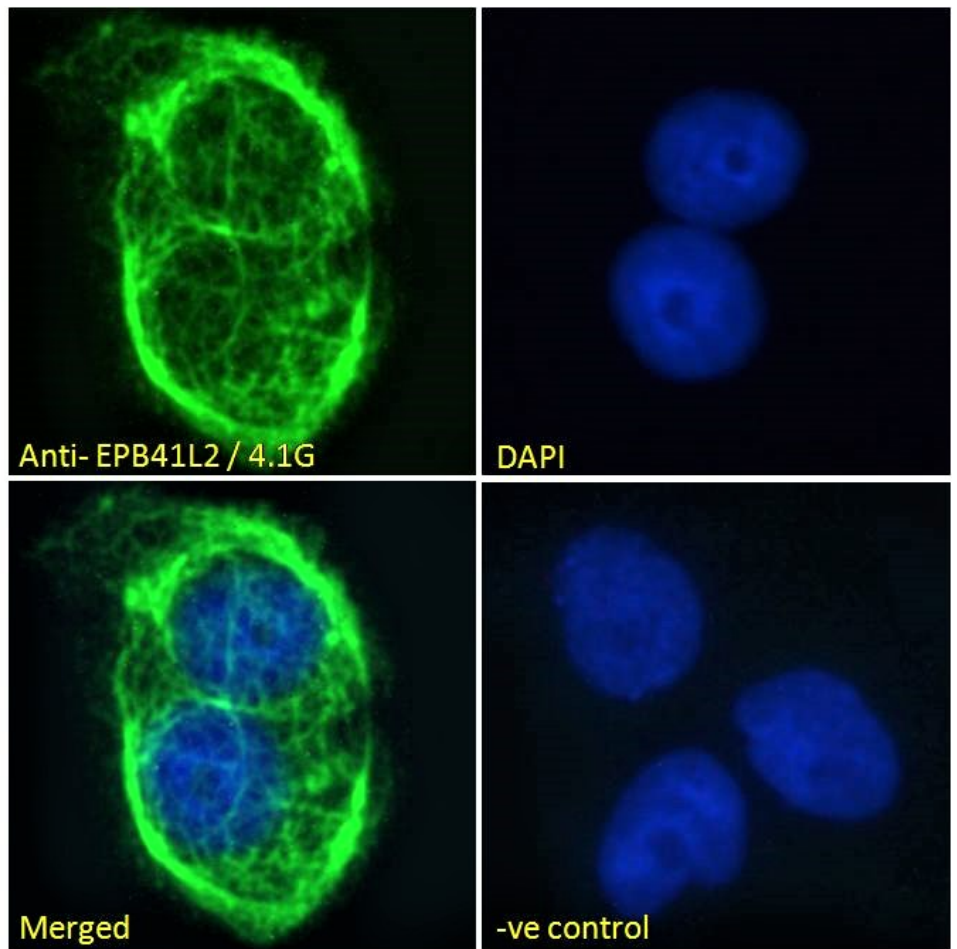
**Immunofluorescence:** Strong expression of the protein seen in the membranes of A431 and in the cell junctions of U2OS cells. Recommended concentration: 10µg/ml.

**Flow Cytometry:** Flow cytometric analysis of A431 cells. Recommended concentration: 10µg/ml.

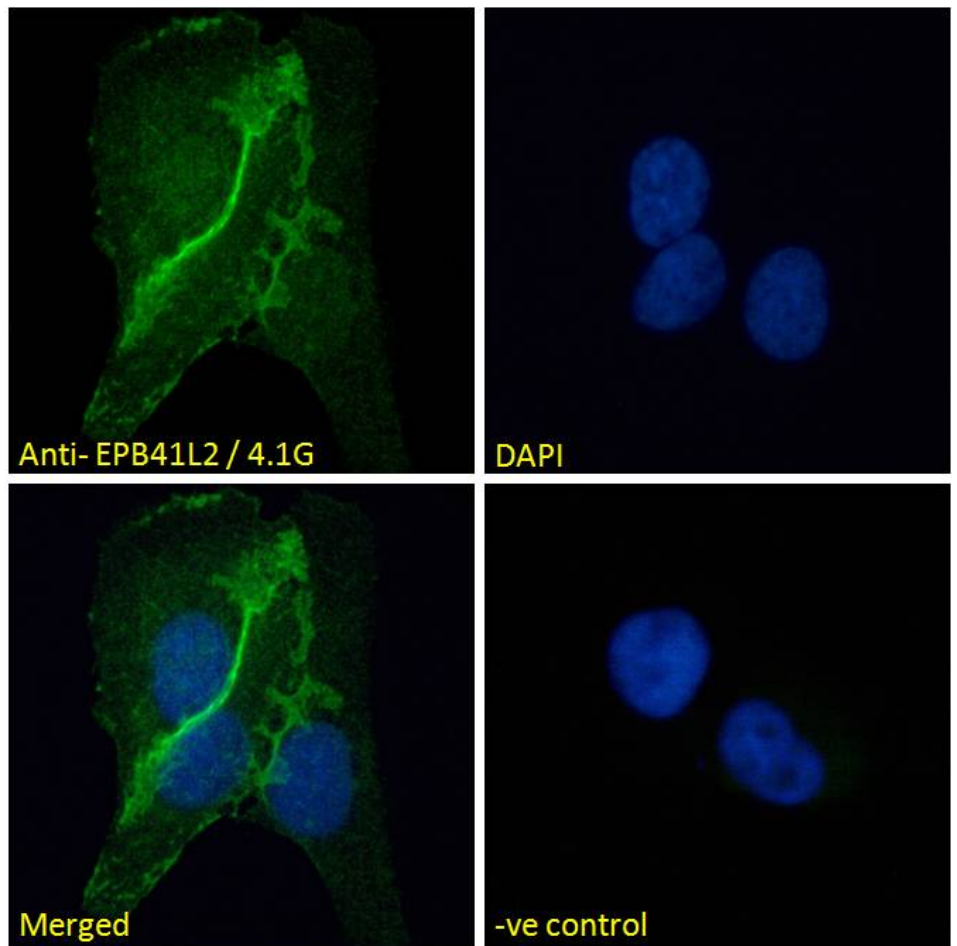
### Species Reactivity

**Tested:** Human

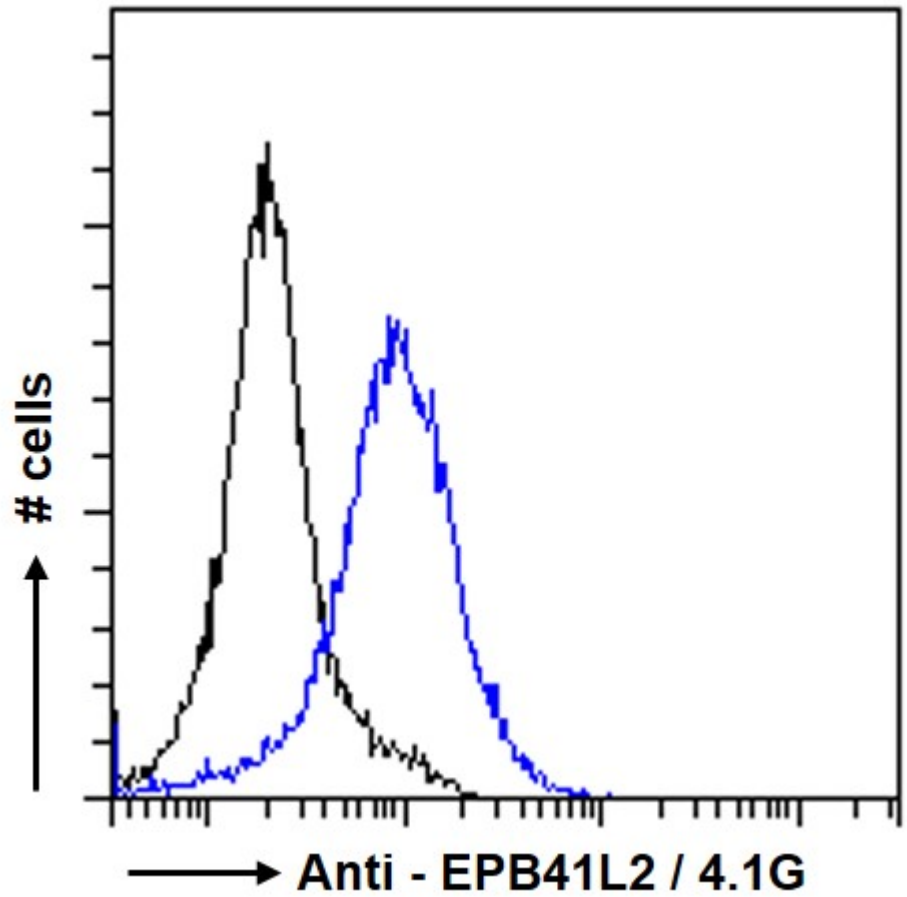
**Expected from sequence similarity:** Human



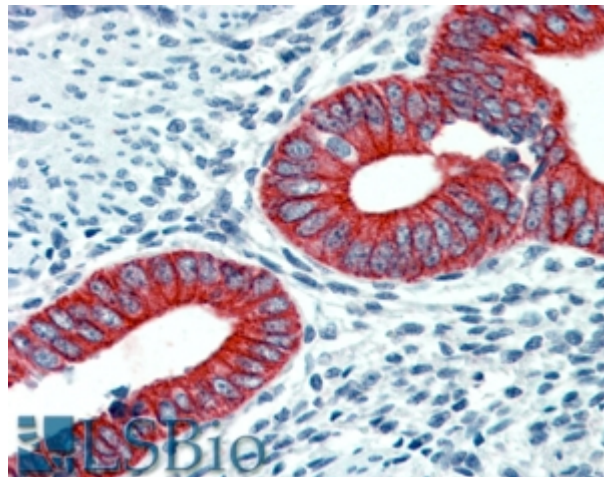
EB08135 Immunofluorescence analysis of paraformaldehyde fixed A431 cells, permeabilized with 0.15% Triton. Primary incubation 1hr (10ug/ml) followed by Alexa Fluor 488 secondary antibody (2ug/ml), showing membrane staining. The nuclear stain is DAPI (blue). Negative control: Unimmunized goat IgG (10ug/ml) followed by Alexa Fluor 488 secondary antibody (2ug/ml).



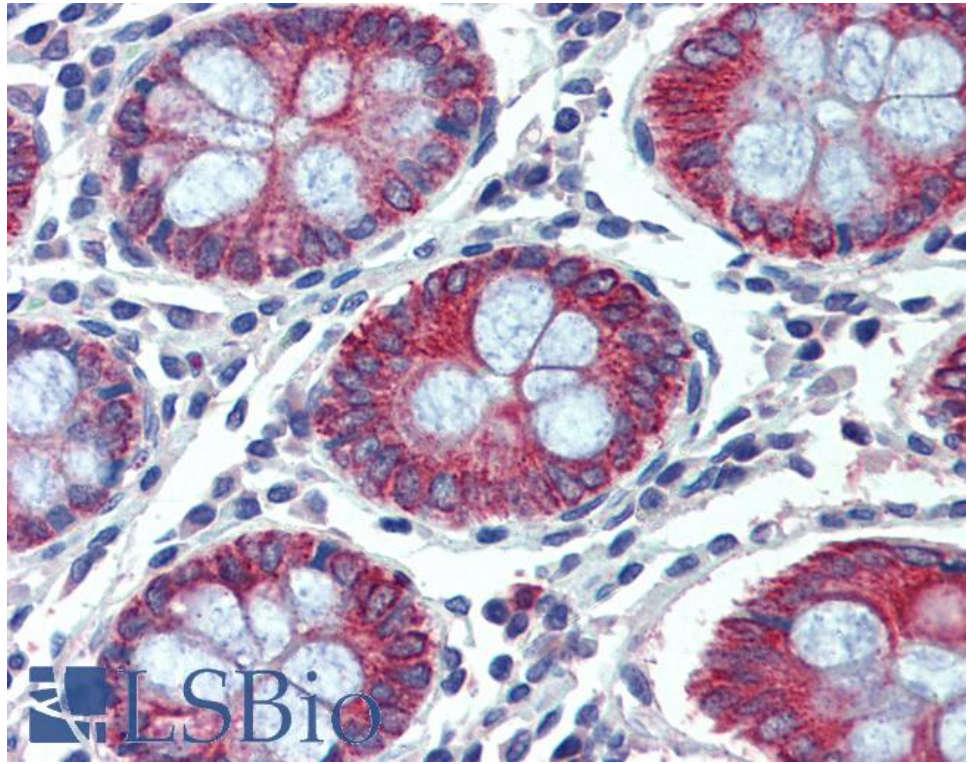
EB08135 Immunofluorescence analysis of paraformaldehyde fixed U2OS cells, permeabilized with 0.15% Triton. Primary incubation 1hr (10ug/ml) followed by Alexa Fluor 488 secondary antibody (2ug/ml), showing cell junction staining. The nuclear stain is DAPI (blue). Negative control: Unimmunized goat IgG (10ug/ml) followed by Alexa Fluor 488 secondary antibody (2ug/ml).



EB08135 Flow cytometric analysis of paraformaldehyde fixed A431 cells (blue line), permeabilized with 0.5% Triton. Primary incubation 1hr (10ug/ml) followed by Alexa Fluor 488 secondary antibody (1ug/ml). IgG control: Unimmunized goat IgG (black line) followed by Alexa Fluor 488 secondary antibody.



EB08135 (2.5µg/ml) staining of paraffin embedded Human Uterus. Steamed antigen retrieval with citrate buffer pH 6, AP-staining.



EB08135 (2.5µg/ml) staining of paraffin embedded Human Colon. Steamed antigen retrieval with citrate buffer pH 6, AP-staining.