



UK Office

Everest Biotech Ltd

Cherwell Innovation Centre
77 Heyford Park
Upper Heyford
Oxfordshire
OX25 5HD
UK

Enquiries:

info@everestbiotech.com

Sales:

sales@everestbiotech.com

Tech support:

support@everestbiotech.com

Tel: +44 (0)1869 238326

www.everestbiotech.com

**Research Use Only. Not for
diagnostic or therapeutic use.**

EB07024 - Goat Anti-EPB41L3 / DAL1 Antibody

Size: 100µg specific antibody in 200µl



Target Protein

Principal Names: EPB41L3, DAL1, erythrocyte membrane protein band 4.1-like 3, HGNC:3380, 4.1B, DAL-1, KIAA0987, differentially expressed in adenocarcinoma of the lung, FLJ37633

Official Symbol: EPB41L3

Accession Number(s): NP_036439.2

Human GeneID(s): [23136](#)

Immunogen

Peptide with sequence C-HKETEITPEDGED, from the C Terminus of the protein sequence according to NP_036439.2.

Please note the [peptide](#) is available for sale.

Purification and Storage

Purified from goat serum by ammonium sulphate precipitation followed by antigen affinity chromatography using the immunizing peptide.

Supplied at 0.5 mg/ml in Tris saline, 0.02% sodium azide, pH7.3 with 0.5% bovine serum albumin.

Aliquot and store at -20°C. Minimize freezing and thawing.

Applications Tested

Peptide ELISA: antibody detection limit dilution 1:2000.

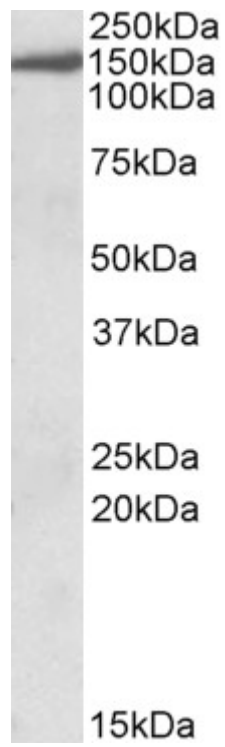
Western blot: Approx 150kDa band observed in Human Brain (Cerebellum), Mouse Brain and Rat Brain lysates (calculated MW of 121kDa according to NP_036439.2).

Recommended concentration: 0.3-1µg/ml. Primary incubation was 1 hour.

Species Reactivity

Tested: Human

Expected from sequence similarity: Human, Mouse, Rat, Dog



EB07024 (0.3 μ g/ml) staining of Human cerebellum lysate (35 μ g protein in RIPA buffer). Detected by chemiluminescence.