



UK Office

Everest Biotech Ltd

Cherwell Innovation Centre
77 Heyford Park
Upper Heyford
Oxfordshire
OX25 5HD
UK

Enquiries:

info@everestbiotech.com

Sales:

sales@everestbiotech.com

Tech support:

support@everestbiotech.com

Tel: +44 (0)1869 238326

Fax: +44 (0)1869 238327

US Office

Everest Biotech c/o Abcore

405 Maple Street, Suite A106
Ramona,
CA 92065
USA

Inquiries:

info@everestbiotech.com

Sales:

usasales@everestbiotech.com

Tech support:

support@everestbiotech.com

Tel: 888-320-4628 (toll-free)

Fax: 888-841-9041

www.everestbiotech.com

**Research Use Only. Not for
diagnostic or therapeutic use.**

EB08136 - Goat Anti-EPB41L4B / EHM2 Antibody

Size: 100µg specific antibody in 200µl



Target Protein

Principal Names: EPB41L4B, erythrocyte membrane protein band 4.1 like 4B, CG1, DKFZp761N1814, EHM2, FLJ21596, EHM2, FERM-containing protein

Official Symbol: EPB41L4B

Accession Number(s): NP_060894.2; NP_061987.3

Human GeneID(s): [54566](#)

Important Comments: This antibody is expected to recognise both reported isoforms (NP_060894.2; NP_061987.3).

Immunogen

Peptide with sequence C-HNYQPQYHPNIHPSQ, from the internal region of the protein sequence according to NP_060894.2; NP_061987.3.

Please note the [peptide](#) is available for sale.

Purification and Storage

Purified from goat serum by ammonium sulphate precipitation followed by antigen affinity chromatography using the immunizing peptide.

Supplied at 0.5 mg/ml in Tris saline, 0.02% sodium azide, pH7.3 with 0.5% bovine serum albumin.

Aliquot and store at -20°C. Minimize freezing and thawing.

Applications Tested

Peptide ELISA: antibody detection limit dilution 1:64000.

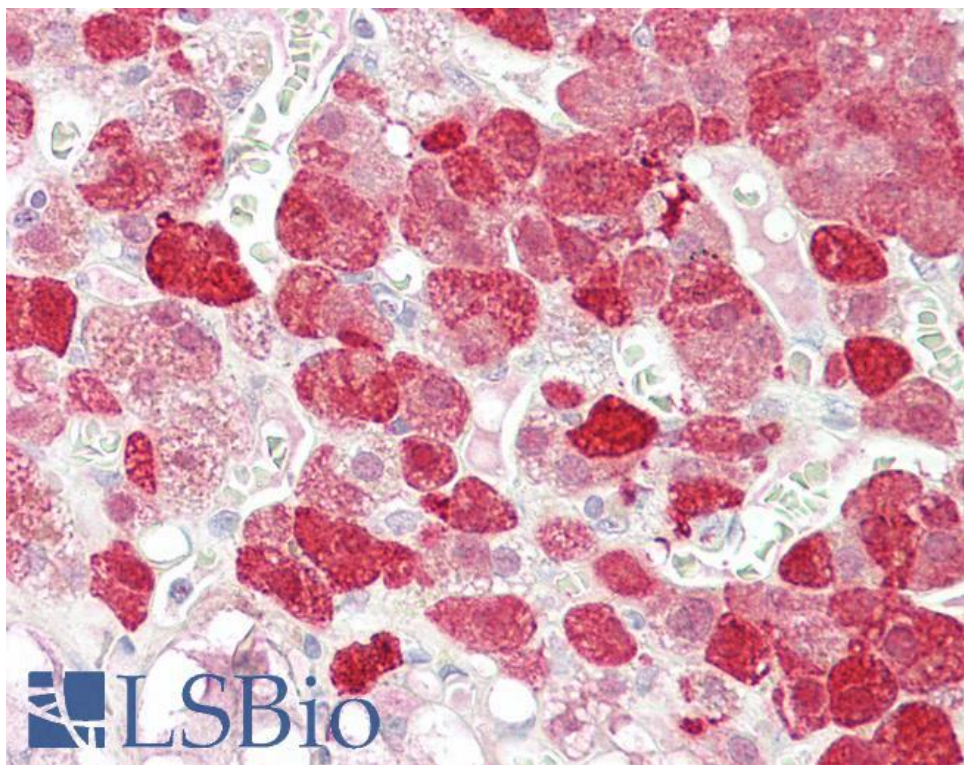
Western blot: Preliminary experiments gave an approx 48kDa band in Human Brain (Hippocampus, Cerebellar Cortex, Cerebellum) and Human Bone Marrow lysates after 0.3µg/ml antibody staining. Please note that currently we cannot find an explanation in the literature for the band we observe given the calculated size of 58.6kDa according to NP_060894.2. The 48kDa band was successfully blocked by incubation with the immunizing peptide.

IHC: Paraffin embedded Human Adrenal Gland. Recommended concentration: 3.75µg/ml.

Species Reactivity

Tested: Human

Expected from sequence similarity: Human



EB08136 (3.75µg/ml) staining of paraffin embedded Human Adrenal Gland. Steamed antigen retrieval with citrate buffer pH 6, AP-staining.