



UK Office

Everest Biotech Ltd

Cherwell Innovation Centre
77 Heyford Park
Upper Heyford
Oxfordshire
OX25 5HD
UK

Enquiries:

info@everestbiotech.com

Sales:

sales@everestbiotech.com

Tech support:

support@everestbiotech.com

Tel: +44 (0)1869 238326

Fax: +44 (0)1869 238327

US Office

Everest Biotech c/o Abcore

405 Maple Street, Suite A106
Ramona,
CA 92065
USA

Inquiries:

info@everestbiotech.com

Sales:

usasales@everestbiotech.com

Tech support:

support@everestbiotech.com

Tel: 888-320-4628 (toll-free)

Fax: 888-841-9041

www.everestbiotech.com

**Research Use Only. Not for
diagnostic or therapeutic use.**

EB07445 - Goat Anti-EPHB2 / DRT / Nuk Antibody

Size: 100µg specific antibody in 200µl



Target Protein

Principal Names: EPHB2, DRT, EPH receptor B2, Cek5, Qek5, Sek3, ETECK, Prkm5, EPHT3, ERK, Hek5, MGC87492, Tyro5, developmentally-regulated eph-related tyrosine kinase, elk-related tyrosine kinase, eph tyrosine kinase 3, ephrin receptor EphB2

Official Symbol: EPHB2

Accession Number(s): NP_004433.2; NP_059145.2

Human GeneID(s): [2048](#)

Non-Human GeneID(s): 13844 (mouse)

Important Comments: This antibody is expected to recognise both reported isoforms (NP_059145.2 and NP_004433.2).

Immunogen

Peptide with sequence C-QKDRNHRPKFGQ, from the internal region of the protein sequence according to NP_004433.2; NP_059145.2.

Please note the [peptide](#) is available for sale.

Purification and Storage

Purified from goat serum by ammonium sulphate precipitation followed by antigen affinity chromatography using the immunizing peptide.

Supplied at 0.5 mg/ml in Tris saline, 0.02% sodium azide, pH7.3 with 0.5% bovine serum albumin.

Aliquot and store at -20°C. Minimize freezing and thawing.

Applications Tested

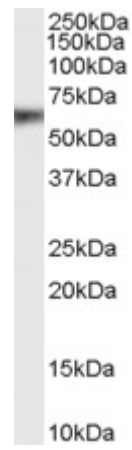
Peptide ELISA: antibody detection limit dilution 1:4000.

Western blot: Approx 60kDa band observed in Human Lung and Placenta lysates (calculated MW of 110kDa according to NP_059145.2 and NP_004433.2). The observed molecular weight corresponds to earlier findings in literature with different antibodies (Litterst et al, J Biol Chem. 2007 Apr 10; PMID: 17428795). Recommended concentration: 1-3µg/ml.

Species Reactivity

Tested: Human

Expected from sequence similarity: Human, Mouse, Rat, Dog



EB07445 (1µg/ml) staining of Human Lung lysate (35µg protein in RIPA buffer). Primary incubation was 1 hour.
Detected by chemiluminescence.