



## International Office

### Everest Biotech Ltd

Vector Laboratories, Inc.  
6737 Mowry Ave  
Newark, CA 94560  
United States

Customer Service:

[customerservice@vectorlabs.com](mailto:customerservice@vectorlabs.com)

Technical Service:

[technical@vectorlabs.com](mailto:technical@vectorlabs.com)

Tel: +1 (800) 227-6666

[www.everestbiotech.com](http://www.everestbiotech.com)

**Research Use Only. Not for  
diagnostic or therapeutic use.**

## EB12762 - Goat Anti-EPHX2 Antibody

Size: 100µg specific antibody in 200µl



### Target Protein

**Principal Names:** EPHX2, epoxide hydrolase 2, cytoplasmic, CEH, SEH, bifunctional epoxide hydrolase 2, epoxide hydratase, epoxide hydrolase 2, cytosolic, epoxide hydrolase, soluble

**Official Symbol:** EPHX2

**Accession Number(s):** NP\_001970.2; NP\_001243411.1; NP\_001243412.1

**Human GeneID(s):** [2053](#)

**Important Comments:** This antibody is expected to recognize all reported isoforms (NP\_001970.2; NP\_001243411.1; NP\_001243412.1). Reported variants represent identical protein: NP\_001243413.1, NP\_001243411.1.

### Immunogen

Peptide with sequence C-SRTFKSLFRASDES, from the internal region of the protein sequence according to NP\_001970.2; NP\_001243411.1; NP\_001243412.1.

Please note the [peptide](#) is available for sale.

### Purification and Storage

Purified from goat serum by ammonium sulphate precipitation followed by antigen affinity chromatography using the immunizing peptide.

Supplied at 0.5 mg/ml in Tris saline, 0.02% sodium azide, pH7.3 with 0.5% bovine serum albumin.

Aliquot and store at -20°C. Minimize freezing and thawing.

### Applications Tested

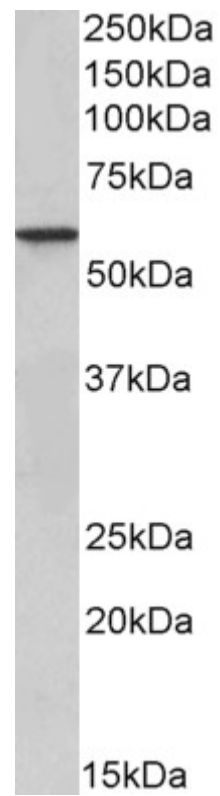
**Peptide ELISA:** antibody detection limit dilution 1:2000.

**Western blot:** Approx 60kDa band observed in Human Kidney lysates (calculated MW of 57.1kDa according to NP\_001243411.1). Recommended concentration: 0.3-1µg/ml.

### Species Reactivity

**Tested:** Human

**Expected from sequence similarity:** Human



EB12762 (0.5 $\mu$ g/ml) staining of Human Kidney lysate (35 $\mu$ g protein in RIPA buffer). Primary incubation was 1 hour. Detected by chemiluminescence.