



UK Office

Everest Biotech Ltd

Cherwell Innovation Centre
77 Heyford Park
Upper Heyford
Oxfordshire
OX25 5HD
UK

Enquiries:

info@everestbiotech.com

Sales:

sales@everestbiotech.com

Tech support:

support@everestbiotech.com

Tel: +44 (0)1869 238326

www.everestbiotech.com

**Research Use Only. Not for
diagnostic or therapeutic use.**

EB07081 - Goat Anti-ERG Antibody

Size: 100µg specific antibody in 200µl



Target Protein

Principal Names: ERG, v-ets erythroblastosis virus E26 oncogene like (avian), HGNC:3446, erg-3, p55, transcriptional regulator ERG (transforming protein ERG), v-ets avian erythroblastosis virus E26 oncogene related, v-ets erythroblastosis virus E26 oncogene like, v-ets erythroblastosis virus E26 oncogene homolog (avian), OTTHUMP00000115970, OTTHUMP00000208036, TMPRSS2-ERG prostate cancer specific, ets-related

Official Symbol: ERG

Accession Number(s): NP_891548.1; NP_004440.1; NP_001129626.1; NP_001129627.1; NP_001230358.1|

Human GeneID(s): [2078](#)

Non-Human GeneID(s): 13876 (mouse), 170909 (rat)

Important Comments: This antibody is expected to recognise all reported isoforms (NP_891548.1; NP_004440.1; NP_001129626.1; NP_001129627.1; NP_001230358.1)

Immunogen

Peptide with sequence C-PNTRLPTSHMP SH, from the C Terminus of the protein sequence according to NP_891548.1; NP_004440.1; NP_001129626.1; NP_001129627.1; NP_001230358.1|.

Please note the [peptide](#) is available for sale.

Purification and Storage

Purified from goat serum by ammonium sulphate precipitation followed by antigen affinity chromatography using the immunizing peptide.

Supplied at 0.5 mg/ml in Tris saline, 0.02% sodium azide, pH7.3 with 0.5% bovine serum albumin.

Aliquot and store at -20°C. Minimize freezing and thawing.

Applications Tested

Peptide ELISA: antibody detection limit dilution 1:16000.

Western blot: Approx 55kDa band observed in lysates of cell line MOLT4 (calculated MW of 53.8kDa according to NP_891548.1). Recommended concentration: 0.1-0.3µg/ml. Primary incubation 1 hour at room temperature.

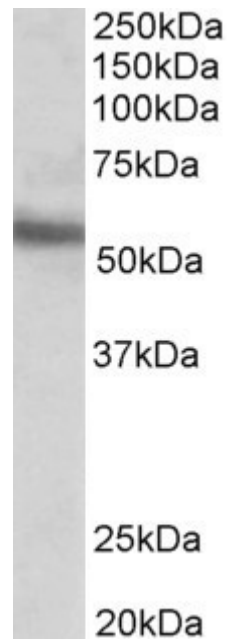
Immunofluorescence: Expression of the protein seen in the nucleus and cytoplasm of MCF7 cells. Recommended concentration: 10µg/ml.

Flow Cytometry: Flow cytometric analysis of MCF7 cells. Recommended concentration: 10ug/ml.

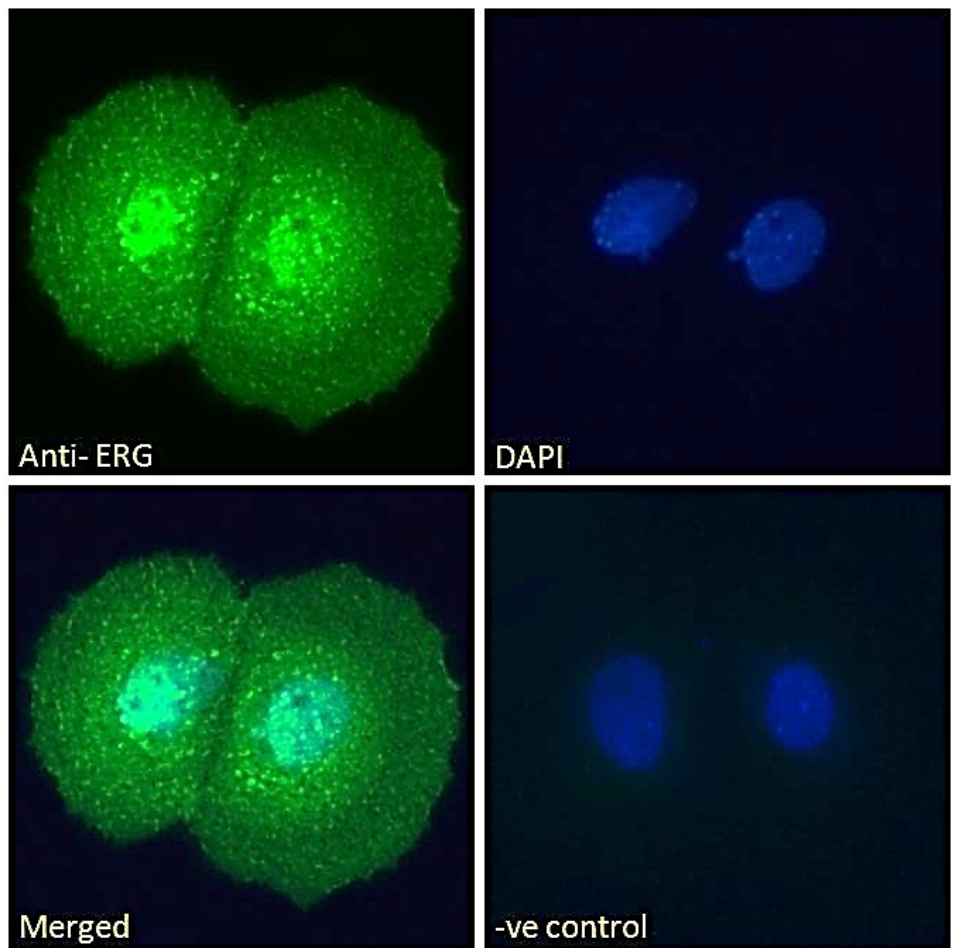
Species Reactivity

Tested: Human

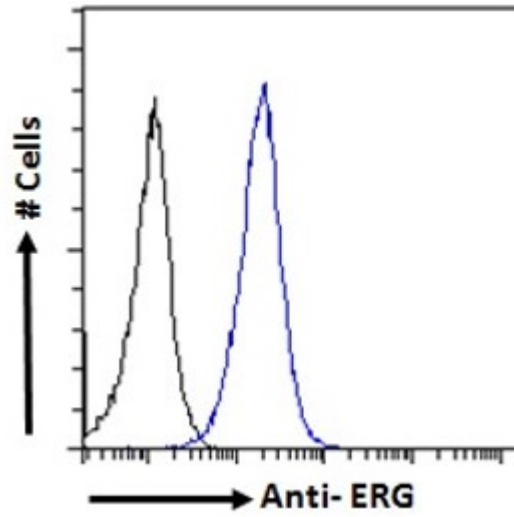
Expected from sequence similarity: Human



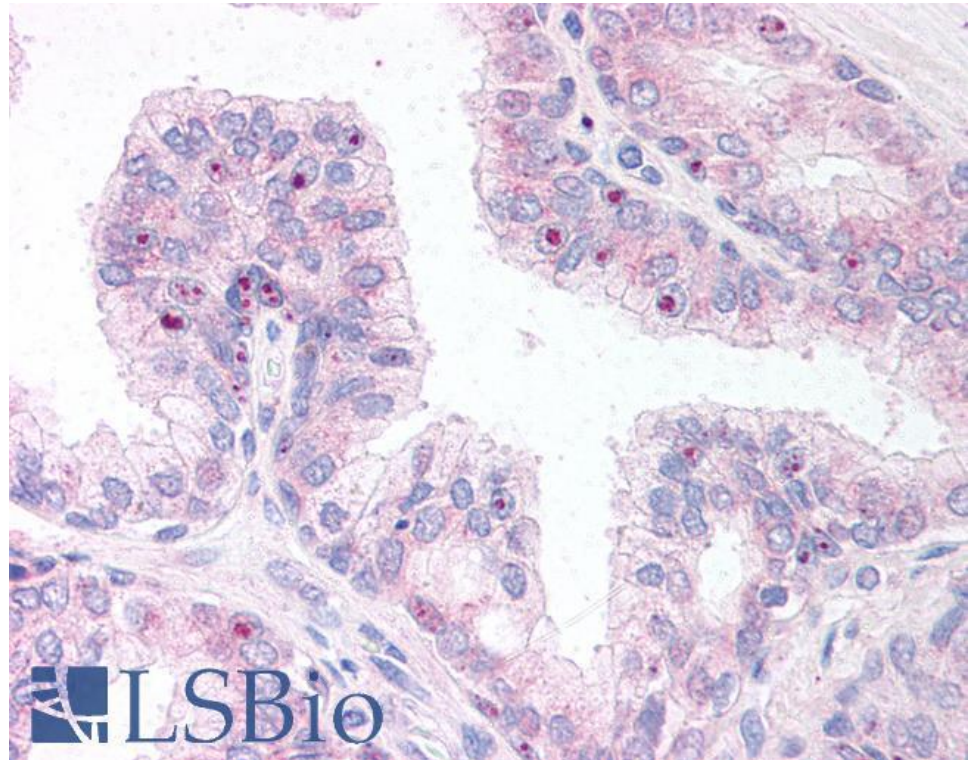
EB07081 (0.1 μ g/ml) staining of MOLT4 lysate (35 μ g protein in RIPA buffer). Detected by chemiluminescence.



EB07081 Immunofluorescence analysis of paraformaldehyde fixed MCF7 cells, permeabilized with 0.15% Triton. Primary incubation 1hr (10 μ g/ml) followed by Alexa Fluor 488 secondary antibody (2 μ g/ml), showing nuclear and cytoplasmic staining. The nuclear stain is DAPI (blue). Negative control: Unimmunized goat IgG (10 μ g/ml) followed by Alexa Fluor 488 secondary antibody (2 μ g/ml).



EB07081 Flow cytometric analysis of paraformaldehyde fixed MCF7 cells (blue line), permeabilized with 0.5% Triton. Primary incubation 1hr (10ug/ml) followed by Alexa Fluor 488 secondary antibody (1ug/ml). IgG control: Unimmunized goat IgG (black line) followed by Alexa Fluor 488 secondary antibody.



EB07081 (10µg/ml) staining of paraffin embedded Human Prostate. Steamed antigen retrieval with citrate buffer pH 6, AP-staining. **This data is from a previous batch, not on sale.**