



## International Office

### Everest Biotech Ltd

Vector Laboratories, Inc.  
6737 Mowry Ave  
Newark, CA 94560  
United States

Customer Service:

[customerservice@vectorlabs.com](mailto:customerservice@vectorlabs.com)

Technical Service:

[technical@vectorlabs.com](mailto:technical@vectorlabs.com)

Tel: +1 (800) 227-6666

[www.everestbiotech.com](http://www.everestbiotech.com)

**Research Use Only. Not for  
diagnostic or therapeutic use.**

## EB10882 - Goat Anti-ERO1-like (aa105-118) Antibody

Size: 100µg specific antibody in 200µl



### Target Protein

**Principal Names:** ERO1L, ERO1-like (S. cerevisiae), ERO1-alpha, ERO1-L, ERO1-L-alpha, ERO1-like protein alpha, endoplasmic oxidoreductin-1-like protein, oxidoreductin-1-L-alpha

**Official Symbol:** ERO1A

**Accession Number(s):** NP\_055399.1

**Human GeneID(s):** [30001](#)

### Immunogen

Peptide with sequence C-QSDEVDPGKISASY, from the internal region of the protein sequence according to NP\_055399.1.

Please note the [peptide](#) is available for sale.

### Purification and Storage

Purified from goat serum by ammonium sulphate precipitation followed by antigen affinity chromatography using the immunizing peptide.

Supplied at 0.5 mg/ml in Tris saline, 0.02% sodium azide, pH7.3 with 0.5% bovine serum albumin.

Aliquot and store at -20°C. Minimize freezing and thawing.

### Applications Tested

**Peptide ELISA:** antibody detection limit dilution 1:32000.

**Western blot:** Approx 70kDa band observed in lysates of cell lines A431, HeLa, Jurkat (calculated MW of 54.4kDa according to NP\_055399.1). The observed molecular weight corresponds to the glycosylated form. Recommended concentration: 0.1-0.3µg/ml. Primary incubation was 1 hour.

**IHC:** Paraffin embedded Human Small Intestine. Recommended concentration: 5µg/ml.

**Additional validation:** This antibody has been successfully used in the following paper: Sikorski et al. (2018) PMID: 30377371.

### Species Reactivity

**Tested:** Human

**Expected from sequence similarity:** Human, Mouse, Rat, Dog, Pig, Cow

### Specific Reference

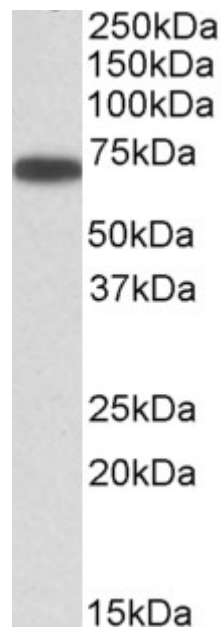
**This antibody has been successfully used in the following paper:**

Krzysztof Sikorski, Adi Mehta, Marit Inngjerdengen, Flourina Thakor, Simon Kling, Tomas Kalina, Tuula A. Nyman, Maria Ekman Stensland, Wei Zhou, Gustavo A. De Souza, Lars Holden, Jan Stuchly, Markus Templin and Fridtjof Lund-Johansen

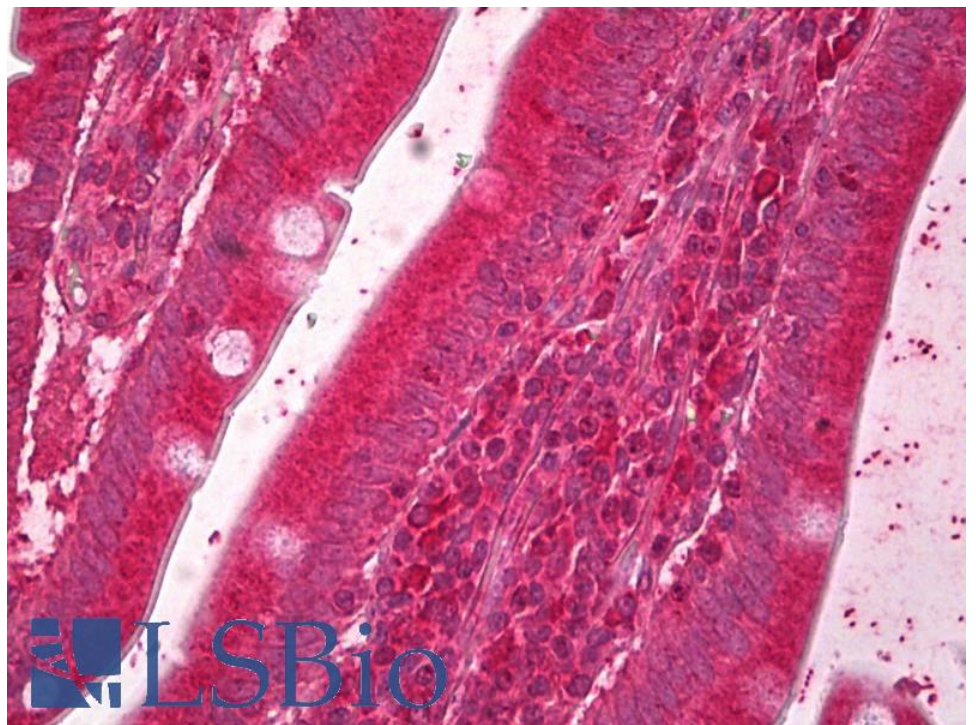
A high-throughput pipeline for validation of antibodies

Nat Methods. 2018 Nov;15(11):909-912

PMID: 30377371



EB10882 (0.3µg/ml) staining of A431 lysate (35µg protein in RIPA buffer). Detected by chemiluminescence.



EB10882 (5µg/ml) staining of paraffin embedded Human Small Intestine. Steamed antigen retrieval with citrate buffer pH 6, AP-staining.