

## UK Office

### Everest Biotech Ltd

Cherwell Innovation Centre  
77 Heyford Park  
Upper Heyford  
Oxfordshire  
OX25 5HD  
UK

Enquiries:

[info@everestbiotech.com](mailto:info@everestbiotech.com)

Sales:

[sales@everestbiotech.com](mailto:sales@everestbiotech.com)

Tech support:

[support@everestbiotech.com](mailto:support@everestbiotech.com)

Tel: +44 (0)1869 238326

[www.everestbiotech.com](http://www.everestbiotech.com)

**Research Use Only. Not for  
diagnostic or therapeutic use.**

## EB08362 - Goat Anti-Estrogen receptor 2 Antibody

Size: 100µg specific antibody in 200µl

### Target Protein

**Principal Names:** ESR2, estrogen receptor 2 (ER beta), ER-BETA, ESR-BETA, ESRB, ESTRB, Erb, NR3A2, estrogen receptor beta, estrogen receptor beta 4

**Official Symbol:** ESR2

**Accession Number(s):** NP\_001035365.1; NP\_001035366.1; NP\_001428.1

**Human GeneID(s):** [2100](#)

**Important Comments:** This antibody is expected to recognise all three isoforms (NP\_001035365.1; NP\_001035366.1; NP\_001428.1)

### Immunogen

Peptide with sequence RRQRSADEQLHC, from the internal region of the protein sequence according to NP\_001035365.1; NP\_001035366.1; NP\_001428.1.

Please note the [peptide](#) is available for sale.

### Purification and Storage

Purified from goat serum by ammonium sulphate precipitation followed by antigen affinity chromatography using the immunizing peptide.

Supplied at 0.5 mg/ml in Tris saline, 0.02% sodium azide, pH7.3 with 0.5% bovine serum albumin.

Aliquot and store at -20°C. Minimize freezing and thawing.

### Applications Tested

**Peptide ELISA:** antibody detection limit dilution 1:128000.

**Western blot:** Approx 55kDa band observed in Human Liver and Thymus lysates (calculated MW of 55.5kDa according to Human NP\_001035365.1). An additional band of 35kDa was observed in some (not all) Liver lysates which was successfully blocked by incubation with the immunizing peptide. Recommended concentration: 0.3-2µg/ml.

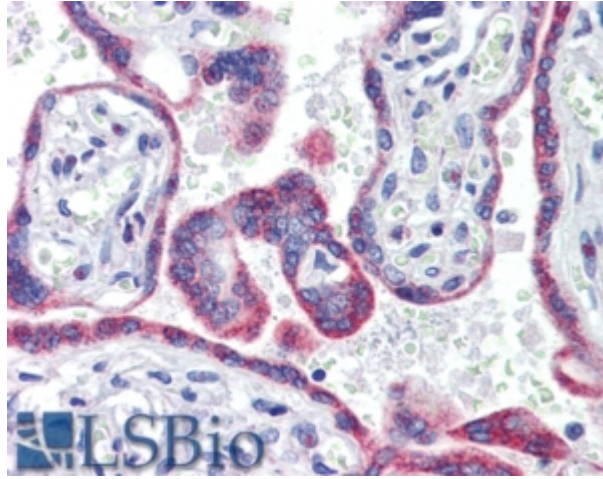
Primary incubation was 1 hour.

**IHC:** In paraffin embedded Human Placenta shows staining of syncytiotrophoblasts. Recommended concentration, 3-5µg/ml.

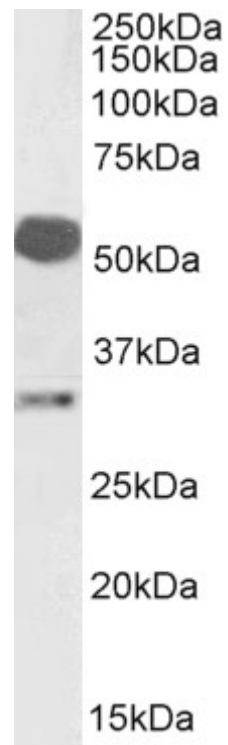
### Species Reactivity

**Tested:** Human

**Expected from sequence similarity:** Human



EB08362 (3.8 $\mu$ g/ml) staining of paraffin embedded Human Placenta. Steamed antigen retrieval with citrate buffer pH 6, AP-staining.



EB08362 (2 $\mu$ g/ml) staining of Human Liver lysate (35 $\mu$ g protein in RIPA buffer). Detected by chemiluminescence.