



## UK Office

### Everest Biotech Ltd

Cherwell Innovation Centre  
77 Heyford Park  
Upper Heyford  
Oxfordshire  
OX25 5HD  
UK

Enquiries:

[info@everestbiotech.com](mailto:info@everestbiotech.com)

Sales:

[sales@everestbiotech.com](mailto:sales@everestbiotech.com)

Tech support:

[support@everestbiotech.com](mailto:support@everestbiotech.com)

Tel: +44 (0)1869 238326

[www.everestbiotech.com](http://www.everestbiotech.com)

**Research Use Only. Not for  
diagnostic or therapeutic use.**

## EB11581 - Goat Anti-Estrogen receptor beta (aa417-428) Antibody

Size: 100µg specific antibody in 200µl



### Target Protein

**Principal Names:** Erb, ER-BETA, ESR2, ESRB, ESR-BETA, ESTRB, estrogen nuclear receptor beta variant a, estrogen nuclear receptor beta variant b, estrogen receptor 2 (ER beta), estrogen receptor beta, estrogen receptor beta 4, NR3A2, nuclear receptor subfamily 3 group A member 2, OTTHUMP00000180647

**Official Symbol:** ESR2

**Accession Number(s):** NP\_001428.1; NP\_001035365.1; NP\_001201831.1;  
NP\_001201832.1

**Human GeneID(s):** [2100](#)

**Important Comments:** This antibody is expected to recognize all reported isoforms (NP\_001428.1; NP\_001035365.1; NP\_001201831.1; NP\_001201832.1). Reported variants represent identical protein: NP\_001035365.1, NP\_001035366.1

### Immunogen

Peptide with sequence C-TQDADSSRKLAH, from the internal region of the protein sequence according to NP\_001428.1; NP\_001035365.1; NP\_001201831.1; NP\_001201832.1.

Please note the [peptide](#) is available for sale.

### Purification and Storage

Purified from goat serum by ammonium sulphate precipitation followed by antigen affinity chromatography using the immunizing peptide.

Supplied at 0.5 mg/ml in Tris saline, 0.02% sodium azide, pH7.3 with 0.5% bovine serum albumin.

Aliquot and store at -20°C. Minimize freezing and thawing.

### Applications Tested

**Peptide ELISA:** antibody detection limit dilution 1:128000.

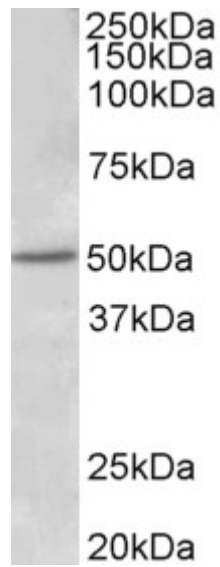
**Western blot:** Approx 50kDa band observed in Human Placenta lysates (calculated MW of 53.0kDa according to NP\_001035366.1). Recommended concentration: 1-3µg/ml. Primary incubation was 1 hour.

**Immunofluorescence:** Strong expression of the protein seen in the nucleus of HeLa and MCF7 cells. Recommended concentration: 10µg/ml.

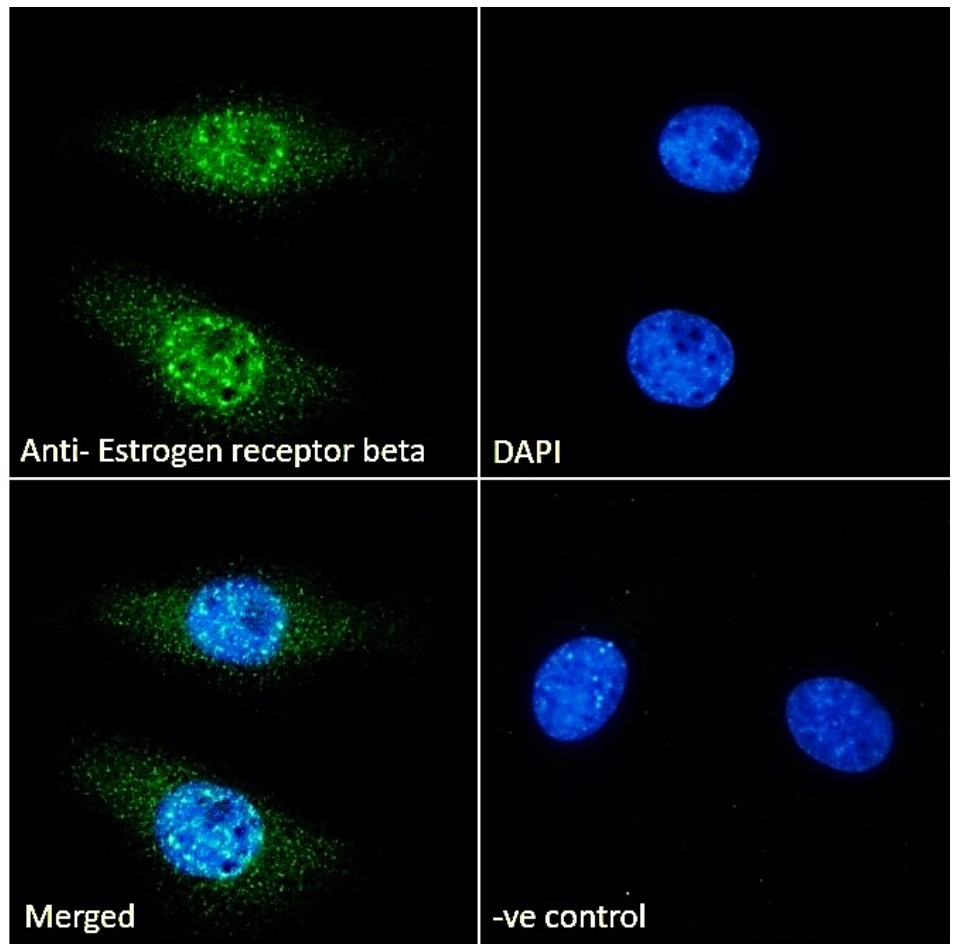
### Species Reactivity

**Tested:** Human

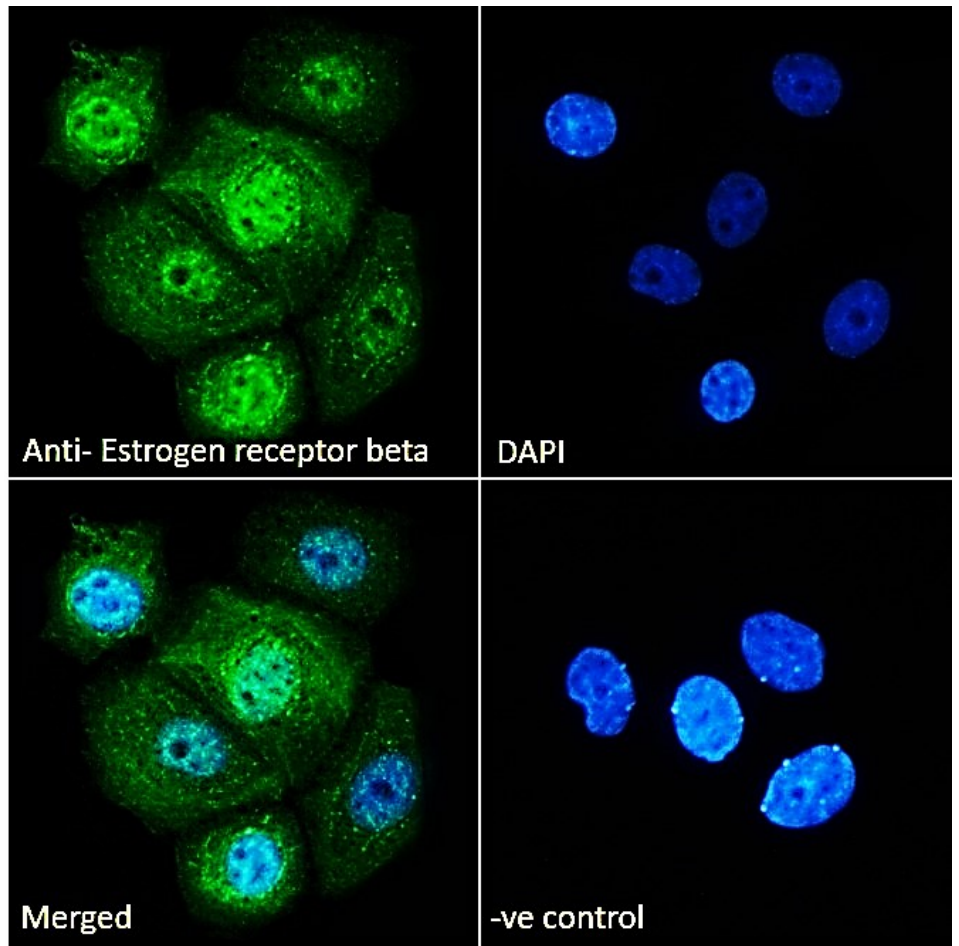
**Expected from sequence similarity:** Human



EB11581 (1 $\mu$ g/ml) staining of Human Placenta lysate (35 $\mu$ g protein in RIPA buffer). Detected by chemiluminescence.



EB11581 Immunofluorescence analysis of paraformaldehyde fixed HeLa cells, permeabilized with 0.15% Triton. Primary incubation 1hr (10 $\mu$ g/ml) followed by Alexa Fluor 488 secondary antibody (2 $\mu$ g/ml), showing nuclear staining. The nuclear stain is DAPI (blue). Negative control: Unimmunized goat IgG (10 $\mu$ g/ml) followed by Alexa Fluor 488 secondary antibody (2 $\mu$ g/ml).



EB11581 Immunofluorescence analysis of paraformaldehyde fixed MCF7 cells, permeabilized with 0.15% Triton. Primary incubation 1hr (10ug/ml) followed by Alexa Fluor 488 secondary antibody (2ug/ml), showing strong nuclear and weak cytoplasmic staining. The nuclear stain is DAPI (blue). Negative control: Unimmunized goat IgG (10ug/ml) followed by Alexa Fluor 488 secondary antibody (2ug/ml).