



## UK Office

### Everest Biotech Ltd

Cherwell Innovation Centre  
77 Heyford Park  
Upper Heyford  
Oxfordshire  
OX25 5HD  
UK

Enquiries:

[info@everestbiotech.com](mailto:info@everestbiotech.com)

Sales:

[sales@everestbiotech.com](mailto:sales@everestbiotech.com)

Tech support:

[support@everestbiotech.com](mailto:support@everestbiotech.com)

Tel: +44 (0)1869 238326

[www.everestbiotech.com](http://www.everestbiotech.com)

**Research Use Only. Not for  
diagnostic or therapeutic use.**

## EB06051 - Goat Anti-ETEA / UBXD8 Antibody

Size: 100µg specific antibody in 200µl



### Target Protein

**Principal Names:** FAF2, ETEA, UBXD8, KIAA0887, expressed in T-cells and eosinophils in atopic dermatitis, UBX domain containing 8, Fas associated factor family member 2, UBXN3B, UBX domain protein 3B

**Official Symbol:** FAF2

**Accession Number(s):** NP\_055428.1

**Human GeneID(s):** [23197](#)

**Non-Human GeneID(s):** 76577 (mouse)

### Immunogen

Peptide with sequence C-HTEVLFVQDLTDE, from the C Terminus of the protein sequence according to NP\_055428.1.

Please note the [peptide](#) is available for sale.

### Purification and Storage

Purified from goat serum by ammonium sulphate precipitation followed by antigen affinity chromatography using the immunizing peptide.

Supplied at 0.5 mg/ml in Tris saline, 0.02% sodium azide, pH7.3 with 0.5% bovine serum albumin.

Aliquot and store at -20°C. Minimize freezing and thawing.

### Applications Tested

**Peptide ELISA:** antibody detection limit dilution 1:16000.

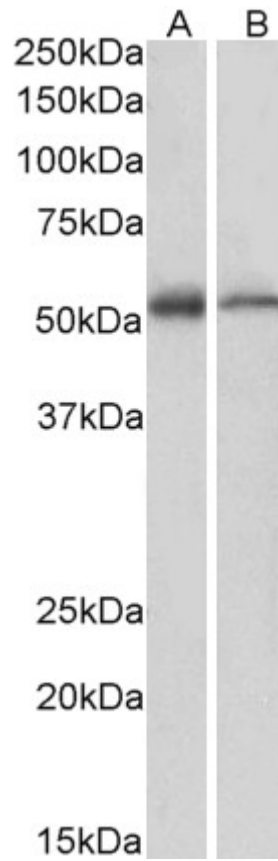
**Western blot:** Approx 55kDa band observed in lysates of Human and Mouse Thymus and of cell line Jurkat (calculated MW of 52.6kDa according to NP\_055428.1).

Recommended concentration: 0.3-1µg/ml.

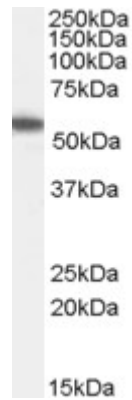
### Species Reactivity

**Tested:** Human, Mouse

**Expected from sequence similarity:** Human, Mouse, Rat, Dog, Cow



EB06051 (1 $\mu$ g/ml) staining of Human (A) and Mouse (B) Thymus lysate (35 $\mu$ g protein in RIPA buffer). Primary incubation was 1 hour. Detected by chemiluminescence.



EB06051 staining (0.3 $\mu$ g/ml) of Jurkat lysate (RIPA buffer, 35 $\mu$ g total protein per lane). Primary incubated for 1 hour. Detected by chemiluminescence.