



International Office

Everest Biotech Ltd

Vector Laboratories, Inc.
6737 Mowry Ave
Newark, CA 94560
United States

Customer Service:

customerservice@vectorlabs.com

Technical Service:

technical@vectorlabs.com

Tel: +1 (800) 227-6666

www.everestbiotech.com

**Research Use Only. Not for
diagnostic or therapeutic use.**

EB09259 - Goat Anti-ETF-4 / TEAD2 Antibody

Size: 100µg specific antibody in 200µl



Target Protein

Principal Names: TEAD2, TEA domain family member 2, ETF, TEF-4, TEF4

Official Symbol: TEAD2

Accession Number(s): NP_003589.1

Human GeneID(s): [8463](#)

Non-Human GeneID(s): 21677 (mouse), 294299 (rat)

Important Comments: This antibody is not expected to cross-react with other TEAD proteins.

Immunogen

Peptide with sequence C-EPPDAVDSYQRH, from the internal region of the protein sequence according to NP_003589.1.

Please note the [peptide](#) is available for sale.

Purification and Storage

Purified from goat serum by ammonium sulphate precipitation followed by antigen affinity chromatography using the immunizing peptide.

Supplied at 0.5 mg/ml in Tris saline, 0.02% sodium azide, pH7.3 with 0.5% bovine serum albumin.

Aliquot and store at -20°C. Minimize freezing and thawing.

Applications Tested

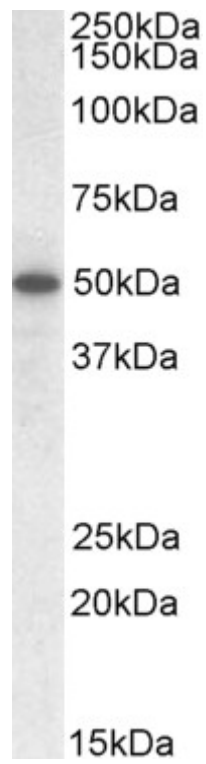
Peptide ELISA: antibody detection limit dilution 1:16000.

Western blot: Approx 50kDa band observed in Human Colon and Human Ileum lysates (calculated MW of 49.2kDa according to NP_003589.1). Recommended concentration: 1-3µg/ml. Primary incubation was 1 hour.

Species Reactivity

Tested: Human

Expected from sequence similarity: Human, Mouse, Rat, Dog, Cow



EB09259 (1 μ g/ml) staining of Human Colon lysate (35 μ g protein in RIPA buffer). Detected by chemiluminescence.