



## UK Office

### Everest Biotech Ltd

Cherwell Innovation Centre  
77 Heyford Park  
Upper Heyford  
Oxfordshire  
OX25 5HD  
UK

Enquiries:

[info@everestbiotech.com](mailto:info@everestbiotech.com)

Sales:

[sales@everestbiotech.com](mailto:sales@everestbiotech.com)

Tech support:

[support@everestbiotech.com](mailto:support@everestbiotech.com)

Tel: +44 (0)1869 238326

Fax: +44 (0)1869 238327

## US Office

### Everest Biotech c/o Abcore

405 Maple Street, Suite A106  
Ramona,  
CA 92065  
USA

Inquiries:

[info@everestbiotech.com](mailto:info@everestbiotech.com)

Sales:

[usasales@everestbiotech.com](mailto:usasales@everestbiotech.com)

Tech support:

[support@everestbiotech.com](mailto:support@everestbiotech.com)

Tel: 888-320-4628 (toll-free)

Fax: 888-841-9041

[www.everestbiotech.com](http://www.everestbiotech.com)

**Research Use Only. Not for  
diagnostic or therapeutic use.**

## EB10173 - Goat Anti-ETFA (aa139-152) Antibody

Size: 100µg specific antibody in 200µl



### Target Protein

**Principal Names:** electron transfer flavoprotein alpha-subunit, electron transfer flavoprotein, alpha polypeptide, electron-transfer-flavoprotein, alpha polypeptide, EMA, GA2, glutaric aciduria II, MADD, ETFA

**Official Symbol:** ETFA

**Accession Number(s):** NP\_000117.1; NP\_001121188.1

**Human GeneID(s):** [2108](#)

**Non-Human GeneID(s):** 110842 (mouse), 300726 (rat)

**Important Comments:** This antibody is expected to recognize both isoforms (NP\_000117.1; NP\_001121188.1). Amino acid numbering in name refers to NP\_000117.1 sequence)

### Immunogen

Peptide with sequence C-KSPDTFVRTIYAGN, from the internal region of the protein sequence according to NP\_000117.1; NP\_001121188.1.

Please note the [peptide](#) is available for sale.

### Purification and Storage

Purified from goat serum by ammonium sulphate precipitation followed by antigen affinity chromatography using the immunizing peptide.

Supplied at 0.5 mg/ml in Tris saline, 0.02% sodium azide, pH7.3 with 0.5% bovine serum albumin.

Aliquot and store at -20°C. Minimize freezing and thawing.

### Applications Tested

**Peptide ELISA:** antibody detection limit dilution 1:16000.

**Western blot:** Approx 30+35kDa bands observed in Human Colon lysates (calculated MW of 35.1kDa according to NP\_000117.1 and of 30.0kDa according to NP\_001121188.1. Recommended concentration: 0.1-0.3µg/ml. Primary incubation was 1 hour.

**IHC:** Paraffin embedded Human Adrenal Gland and Heart. Recommended concentration: 5µg/ml.

### Species Reactivity

**Tested:** Human

**Expected from sequence similarity:** Human, Mouse, Rat, Pig, Dog, Cow

### Specific Reference

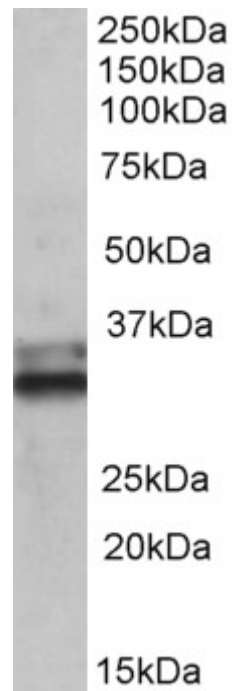
**This antibody has been successfully used in Western blot on Mouse:**

Tomilov A, Tomilova N, Shan Y, Hagopian K, Bettaieb A, Kim K, Pelicci PG, Haj F, Ramsey J, Cortopassi G.

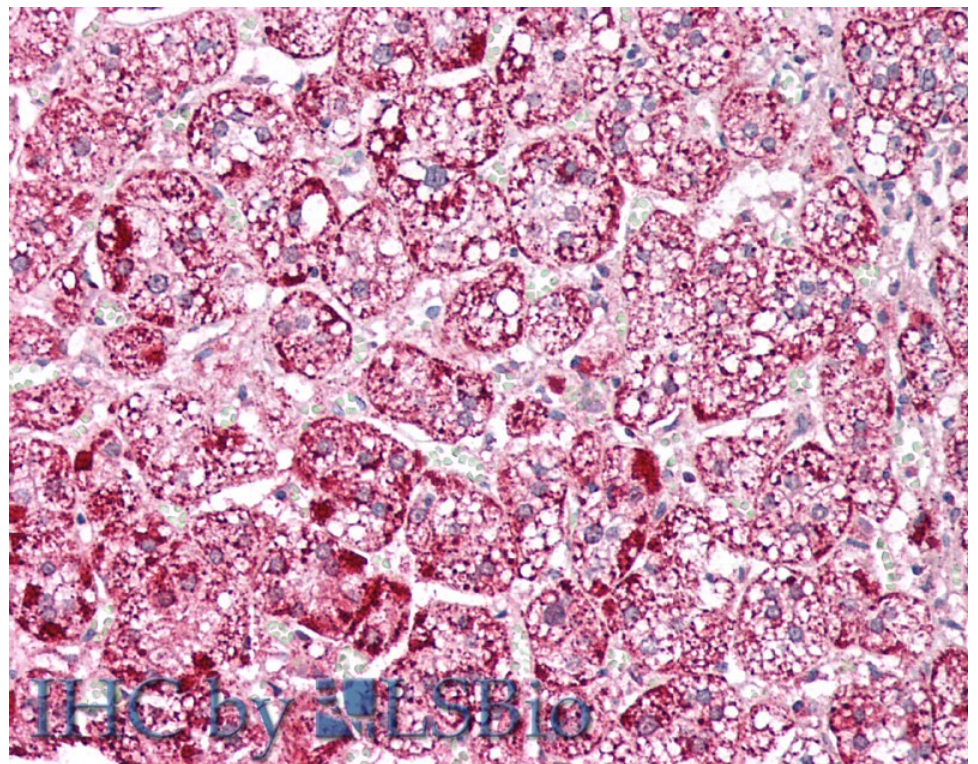
The mitochondrial isoform of Shc protein inhibits thiolase and lipid oxidation.

J Biol Chem. 2016 Apr 8.

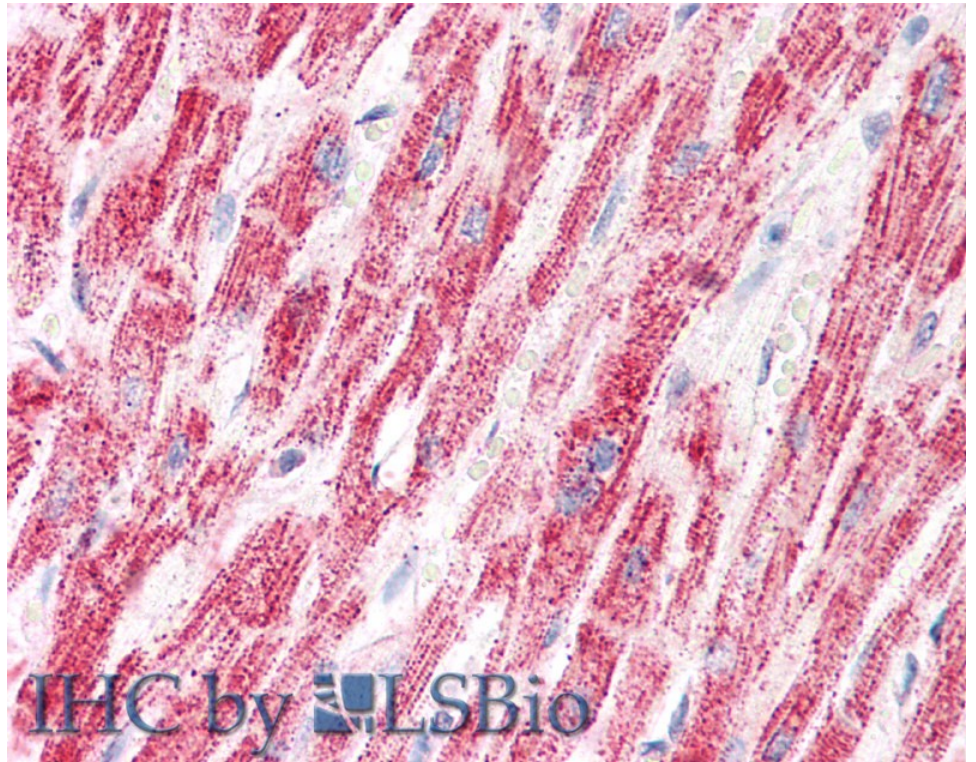
PMID: 27059956



EB10173 (0.1µg/ml) staining of Human Colon lysate (35µg protein in RIPA buffer). Detected by chemiluminescence.



EB10173 (5µg/ml) staining of paraffin embedded Human Adrenal Gland. Steamed antigen retrieval with citrate buffer pH 6, AP-staining.



EB10173 (5µg/ml) staining of paraffin embedded Human Heart. Steamed antigen retrieval with citrate buffer pH 6, AP-staining.