



## UK Office

### Everest Biotech Ltd

Cherwell Innovation Centre  
77 Heyford Park  
Upper Heyford  
Oxfordshire  
OX25 5HD  
UK

Enquiries:

[info@everestbiotech.com](mailto:info@everestbiotech.com)

Sales:

[sales@everestbiotech.com](mailto:sales@everestbiotech.com)

Tech support:

[support@everestbiotech.com](mailto:support@everestbiotech.com)

Tel: +44 (0)1869 238326

Fax: +44 (0)1869 238327

## US Office

### Everest Biotech c/o Abcore

405 Maple Street, Suite A106  
Ramona,  
CA 92065  
USA

Inquiries:

[info@everestbiotech.com](mailto:info@everestbiotech.com)

Sales:

[usasales@everestbiotech.com](mailto:usasales@everestbiotech.com)

Tech support:

[support@everestbiotech.com](mailto:support@everestbiotech.com)

Tel: 888-320-4628 (toll-free)

Fax: 888-841-9041

[www.everestbiotech.com](http://www.everestbiotech.com)

**Research Use Only. Not for  
diagnostic or therapeutic use.**

## EB10171 - Goat Anti-ETFB / FP585 (aa 152-165) Antibody

Size: 100µg specific antibody in 200µl



### Target Protein

**Principal Names:** electron transfer flavoprotein beta subunit, electron transfer flavoprotein beta-subunit, electron transfer flavoprotein, beta polypeptide, electron-transfer-flavoprotein, beta polypeptide, electron-transferring-flavoprotein, beta polyp, FP585, MADD, ETFB

**Official Symbol:** ETFB

**Accession Number(s):** NP\_001976.1; NP\_001014763.1

**Human GeneID(s):** [2109](#)

**Non-Human GeneID(s):** 110826 (mouse), 292845 (rat)

**Important Comments:** This antibody is expected to recognize both reported isoforms (NP\_001976.1; NP\_001014763.1). Amino acid numbering in the name above refers to NP\_001976.1).

### Immunogen

Peptide with sequence C-QVTLEGDKLKVERE, from the internal region of the protein sequence according to NP\_001976.1; NP\_001014763.1.

Please note the [peptide](#) is available for sale.

### Purification and Storage

Purified from goat serum by ammonium sulphate precipitation followed by antigen affinity chromatography using the immunizing peptide.

Supplied at 0.5 mg/ml in Tris saline, 0.02% sodium azide, pH7.3 with 0.5% bovine serum albumin.

Aliquot and store at -20°C. Minimize freezing and thawing.

### Applications Tested

**Peptide ELISA:** antibody detection limit dilution 1:8000.

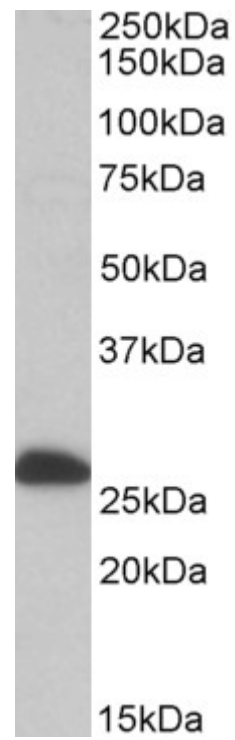
**Western blot:** Approx 27kDa band observed in Human, Mouse and Rat Liver lysates (calculated MW of 27.8kDa according to NP\_001976.1). Recommended concentration: 1-3µg/ml.

**IHC:** In paraffin embedded Human Liver shows mitochondrial staining in hepatocytes. Recommended concentration, 3-5µg/ml.

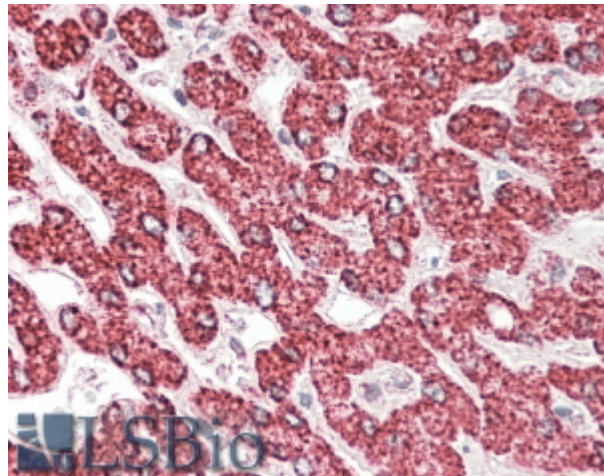
### Species Reactivity

**Tested:** Human, Mouse, Rat

**Expected from sequence similarity:** Human, Mouse, Rat, Dog, Cow



EB10171 (0.1 $\mu$ g/ml) staining of Human Liver lysate (35 $\mu$ g protein in RIPA buffer). Primary incubation was 1 hour.  
Detected by chemiluminescence.



EB10171 (3.8 $\mu$ g/ml) staining of paraffin embedded Human Liver. Steamed antigen retrieval with citrate buffer pH 6, AP-staining.