



## UK Office

### Everest Biotech Ltd

Cherwell Innovation Centre  
77 Heyford Park  
Upper Heyford  
Oxfordshire  
OX25 5HD  
UK

Enquiries:

[info@everestbiotech.com](mailto:info@everestbiotech.com)

Sales:

[sales@everestbiotech.com](mailto:sales@everestbiotech.com)

Tech support:

[support@everestbiotech.com](mailto:support@everestbiotech.com)

Tel: +44 (0)1869 238326

[www.everestbiotech.com](http://www.everestbiotech.com)

**Research Use Only. Not for  
diagnostic or therapeutic use.**

## EB10177 - Goat Anti-ETFDH Antibody

Size: 100µg specific antibody in 200µl



### Target Protein

**Principal Names:** electron transfer flavoprotein ubiquinone oxidoreductase, electron-transferring-flavoprotein dehydrogenase, ETF dehydrogenase, ETFQO, ETF-ubiquinone oxidoreductase, MADD, ETFDH

**Official Symbol:** ETFDH

**Accession Number(s):** NP\_004444.2

**Human GeneID(s):** [2110](#)

**Non-Human GeneID(s):** 66841 (mouse), 295143 (rat)

### Immunogen

Peptide with sequence C-EHDQPAHLTLRD, from the internal region of the protein sequence according to NP\_004444.2.

Please note the [peptide](#) is available for sale.

### Purification and Storage

Purified from goat serum by ammonium sulphate precipitation followed by antigen affinity chromatography using the immunizing peptide.

Supplied at 0.5 mg/ml in Tris saline, 0.02% sodium azide, pH7.3 with 0.5% bovine serum albumin.

Aliquot and store at -20°C. Minimize freezing and thawing.

### Applications Tested

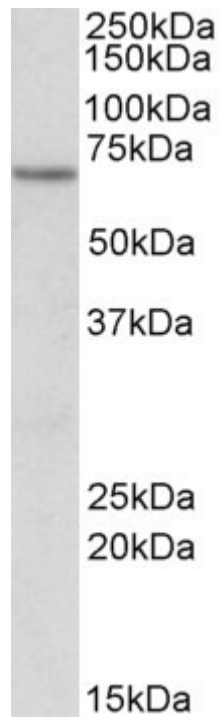
**Peptide ELISA:** antibody detection limit dilution 1:2000.

**Western blot:** Approx 70kDa band observed in Human, Mouse and Rat Heart lysates (calculated MW of 68.5kDa according to NP\_004444.2). Recommended concentration: 1-3µg/ml.

### Species Reactivity

**Tested:** Human, Mouse, Rat

**Expected from sequence similarity:** Human, Mouse, Rat, Dog, Cow



EB10177 (1 $\mu$ g/ml) staining of Human Kidney lysate (35 $\mu$ g protein in RIPA buffer). Primary incubation was 1 hour.  
Detected by chemiluminescence.