

International Office

Everest Biotech Ltd

Vector Laboratories, Inc.
6737 Mowry Ave
Newark, CA 94560
United States

Customer Service:

customerservice@vectorlabs.com

Technical Service:

technical@vectorlabs.com

Tel: +1 (800) 227-6666

www.everestbiotech.com

**Research Use Only. Not for
diagnostic or therapeutic use.**

EB07080 - Goat Anti-ETV1 Antibody

Size: 100µg specific antibody in 200µl



Target Protein

Principal Names: ETV1, ets variant gene 1, HGNC:3490, DKFZp781L0674, ER81, MGC104699, MGC120533, MGC120534, ets variant 1

Official Symbol: ETV1

Accession Number(s): NP_004947.2; NP_001156619.1; NP_001156620.1; NP_001156621.1; NP_001156622.1; NP_001156623.1; NP_001156624.1NP_001357485.1

Human GeneID(s): [2115](#)

Important Comments: This antibody is expected to recognise all reported isoforms. Variants (NP_001156620.1; NP_001156621.1) encode the same isoform.

Immunogen

Peptide with sequence PLKIKKEPHSPCSE, from the internal region of the protein sequence according to NP_004947.2; NP_001156619.1; NP_001156620.1; NP_001156621.1; NP_001156622.1; NP_001156623.1; NP_001156624.1NP_001357485.1.

Please note the [peptide](#) is available for sale.

Purification and Storage

Purified from goat serum by ammonium sulphate precipitation followed by antigen affinity chromatography using the immunizing peptide.

Supplied at 0.5 mg/ml in Tris saline, 0.02% sodium azide, pH7.3 with 0.5% bovine serum albumin.

Aliquot and store at -20°C. Minimize freezing and thawing.

Applications Tested

Peptide ELISA: antibody detection limit dilution 1:8000.

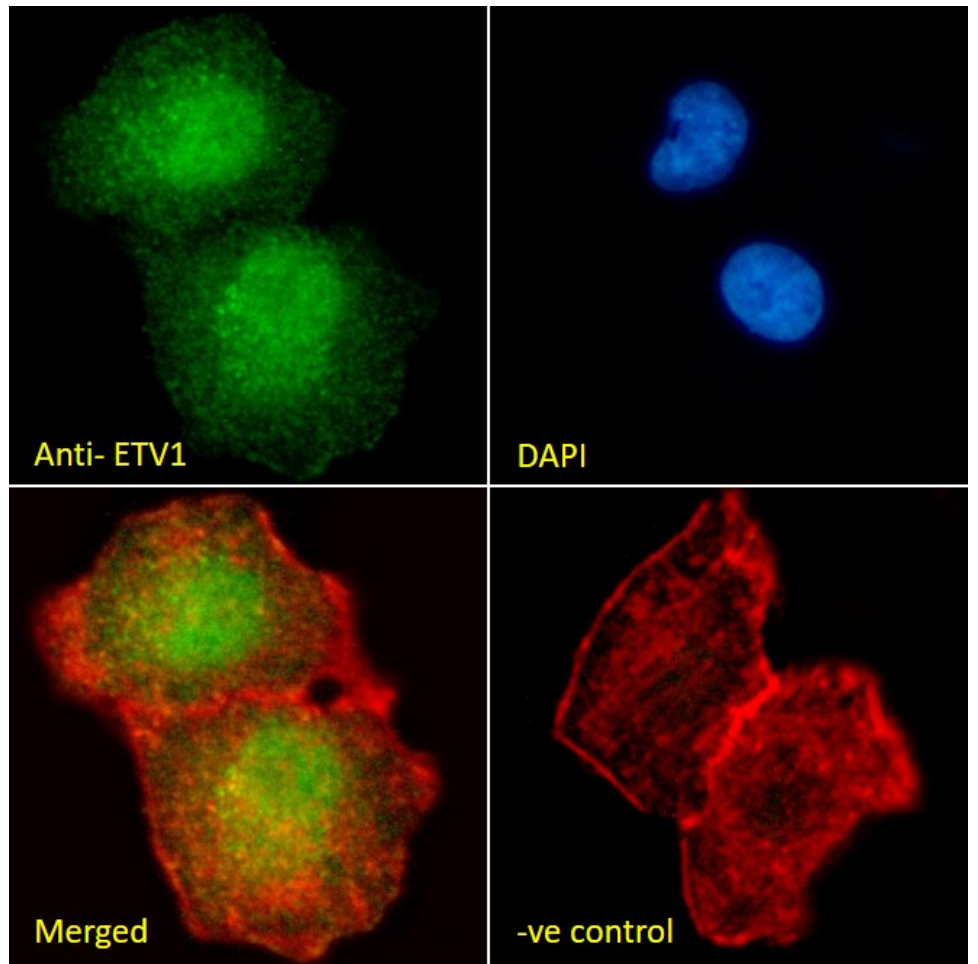
Immunofluorescence: Strong expression of the protein seen in the nuclei of A549 cells. Recommended concentration: 10µg/ml.

Flow Cytometry: Flow cytometric analysis of A549 cells. Recommended concentration: 10ug/ml.

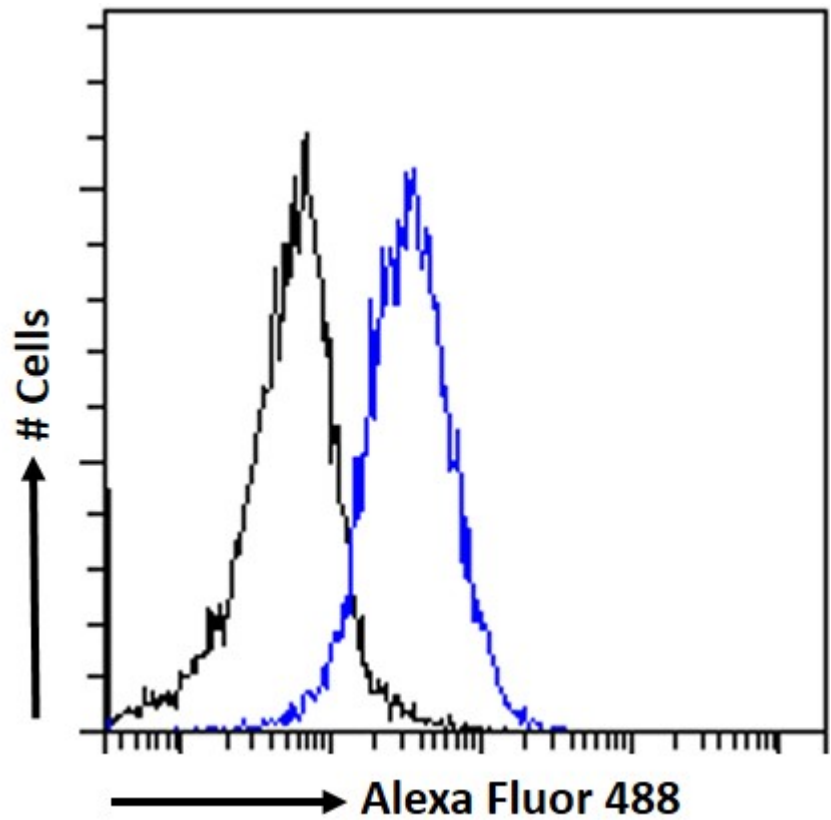
Species Reactivity

Tested: Human

Expected from sequence similarity: Human, Mouse, Rat, Dog, Cow



EB07080 Immunofluorescence analysis of paraformaldehyde fixed A549 cells, permeabilized with 0.15% Triton. Primary incubation 1hr (10ug/ml) followed by Alexa Fluor 488 secondary antibody (2ug/ml), showing nuclear staining. Actin filaments were stained with phalloidin (red) and the nuclear stain is DAPI (blue). Negative control: Unimmunized goat IgG (10ug/ml) followed by Alexa Fluor 488 secondary antibody (2ug/ml).



EB07080 Flow cytometric analysis of paraformaldehyde fixed A549 cells (blue line), permeabilized with 0.5% Triton. Primary incubation 1hr (10ug/ml) followed by Alexa Fluor 488 secondary antibody (1ug/ml). IgG control: Unimmunized goat IgG (black line) followed by Alexa Fluor 488 secondary antibody.