



UK Office

Everest Biotech Ltd

Cherwell Innovation Centre
77 Heyford Park
Upper Heyford
Oxfordshire
OX25 5HD
UK

Enquiries:

info@everestbiotech.com

Sales:

sales@everestbiotech.com

Tech support:

support@everestbiotech.com

Tel: +44 (0)1869 238326

www.everestbiotech.com

**Research Use Only. Not for
diagnostic or therapeutic use.**

EB07345 - Goat Anti-ETV4 Antibody

Size: 100µg specific antibody in 200µl



Target Protein

Principal Names: ETV4, ets variant gene 4 (E1A enhancer binding protein, E1AF), HGNC:3493, E1A-F, PEA3, PEAS3, ets variant gene 4 (E1A enhancer-binding protein, E1AF), polyomavirus enhancer activator-3

Official Symbol: ETV4

Accession Number(s): NP_001977.1

Human GeneID(s): [2118](#)

Non-Human GeneID(s): 18612 (mouse), 360635 (rat)

Immunogen

Peptide with sequence C-PTTRIKKEPQSPRTD, from the internal region of the protein sequence according to NP_001977.1.

Please note the [peptide](#) is available for sale.

Purification and Storage

Purified from goat serum by ammonium sulphate precipitation followed by antigen affinity chromatography using the immunizing peptide.

Supplied at 0.5 mg/ml in Tris saline, 0.02% sodium azide, pH7.3 with 0.5% bovine serum albumin.

Aliquot and store at -20°C. Minimize freezing and thawing.

Applications Tested

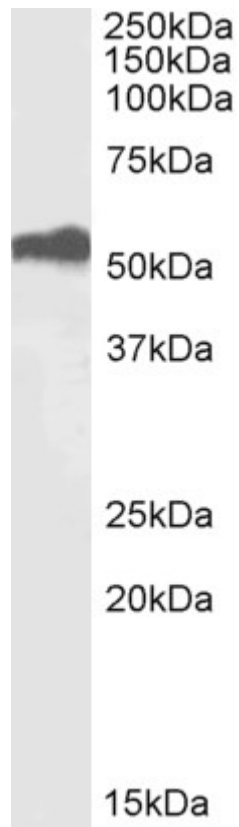
Peptide ELISA: antibody detection limit dilution 1:2000.

Western blot: Approx 55kDa band observed in Human Duodenum lysates (calculated MWt of 53.9kDa according to NP_001977.1) Recommended concentration: 0.1-0.5µg/ml.

Species Reactivity

Tested: Human

Expected from sequence similarity: Human, Mouse, Rat, Dog



EB07345 (0.5 μ g/ml) staining of Human Duodenum lysate (35 μ g protein in RIPA buffer). Primary incubation was 1 hour. Detected by chemiluminescence.