



UK Office

Everest Biotech Ltd

Cherwell Innovation Centre
77 Heyford Park
Upper Heyford
Oxfordshire
OX25 5HD
UK

Enquiries:

info@everestbiotech.com

Sales:

sales@everestbiotech.com

Tech support:

support@everestbiotech.com

Tel: +44 (0)1869 238326

Fax: +44 (0)1869 238327

US Office

Everest Biotech c/o Abcore

405 Maple Street, Suite A106
Ramona,
CA 92065
USA

Inquiries:

info@everestbiotech.com

Sales:

usasales@everestbiotech.com

Tech support:

support@everestbiotech.com

Tel: 888-320-4628 (toll-free)

Fax: 888-841-9041

www.everestbiotech.com

**Research Use Only. Not for
diagnostic or therapeutic use.**

EB05911 - Goat Anti-EVC2 / Limbin Antibody

Size: 100µg specific antibody in 200µl



Target Protein

Principal Names: EVC2, LBN, LIMBIN, Ellis van Creveld syndrome 2 (limbin), limbin

Official Symbol: EVC2

Accession Number(s): NP_667338.3; NP_001159608.1

Human GeneID(s): [132884](#)

Important Comments: This antibody is expected to recognise isoform 1 (NP_667338.3) and isoform 2 (NP_001159608.1).

Immunogen

Peptide with sequence C-LNAKKAMRALGMD, from the C Terminus of the protein sequence according to NP_667338.3; NP_001159608.1.

Please note the [peptide](#) is available for sale.

Purification and Storage

Purified from goat serum by ammonium sulphate precipitation followed by antigen affinity chromatography using the immunizing peptide.

Supplied at 0.5 mg/ml in Tris saline, 0.02% sodium azide, pH7.3 with 0.5% bovine serum albumin.

Aliquot and store at -20°C. Minimize freezing and thawing.

Applications Tested

Peptide ELISA: antibody detection limit dilution 1:16000.

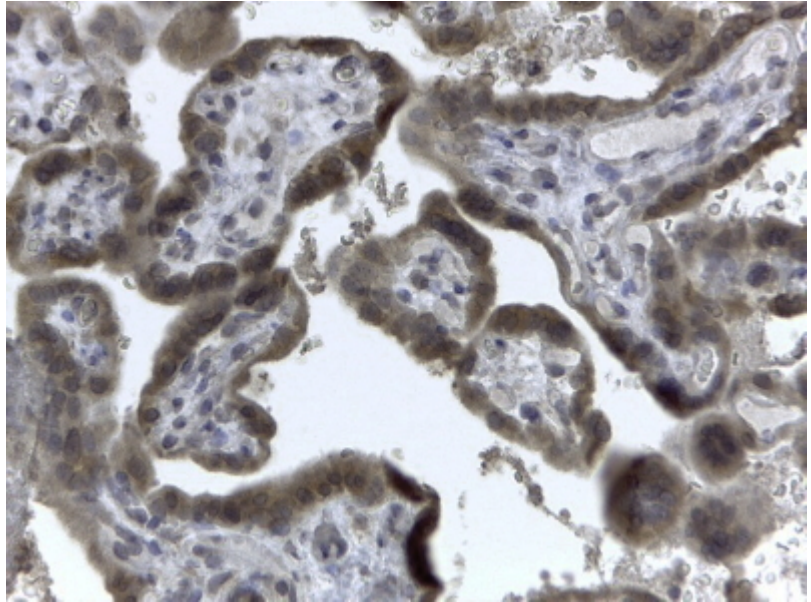
Western blot: A customer reported that a consistent band was observed in 293 and human heart at approx 75kDa with 1 hour incubation of primary at 0.5ug/ml.

IHC: In paraffin embedded Human Placenta shows strong staining of the cytotrophoblasts. Recommended concentration, 2-4µg/ml.

Species Reactivity

Tested: Human

Expected from sequence similarity: Human



EB05911 (2µg/ml) staining of paraffin embedded Human Placenta. Steamed antigen retrieval with citrate buffer pH 6, HRP-staining.