

International Office

Everest Biotech Ltd

Vector Laboratories, Inc.
6737 Mowry Ave
Newark, CA 94560
United States

Customer Service:

customerservice@vectorlabs.com

Technical Service:

technical@vectorlabs.com

Tel: +1 (800) 227-6666

www.everestbiotech.com

**Research Use Only. Not for
diagnostic or therapeutic use.**

EB08306 - Goat Anti-EXO1 Antibody

Size: 100µg specific antibody in 200µl



Target Protein

Principal Names: EXO1, exonuclease 1, HEX1, hExol, rad2 nuclease family member, homolog of S. cerevisiae exonuclease 1

Official Symbol: EXO1

Accession Number(s): NP_003677.3; NP_006018.3; NP_569082.1

Human GeneID(s): [9156](#)

Important Comments: This antibody is expected to recognise all three reported isoforms (NP_003677.3; NP_006018.3 and NP_569082.1)

Immunogen

Peptide with sequence C-HRNYSPRPESGT, from the internal region of the protein sequence according to NP_003677.3; NP_006018.3; NP_569082.1.

Please note the [peptide](#) is available for sale.

Purification and Storage

Purified from goat serum by ammonium sulphate precipitation followed by antigen affinity chromatography using the immunizing peptide.

Supplied at 0.5 mg/ml in Tris saline, 0.02% sodium azide, pH7.3 with 0.5% bovine serum albumin.

Aliquot and store at -20°C. Minimize freezing and thawing.

Applications Tested

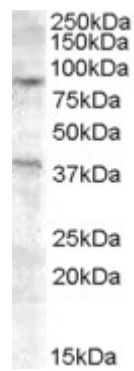
Peptide ELISA: antibody detection limit dilution 1:64000.

Western blot: Approx 90kDa band observed in lysates in cell lines HEK293 and A549 (calculated MW of 89.1kDa according to NP_003677.3). Recommended concentration: 0.2-0.5µg/ml. An additional band of unknown identity was also consistently observed at 38kDa. This band was successfully blocked by incubation with the immunising peptide. We would appreciate any feedback from people in the field - have any such results been reported with other antibodies/lysates? Have any further splice variants/modified forms been reported?

Species Reactivity

Tested: Human

Expected from sequence similarity: Human



EB08306 (0.2µg/ml) staining of A549 cell lysate (35µg protein in RIPA buffer). Primary incubation was 1 hour.
Detected by chemiluminescence.