



UK Office

Everest Biotech Ltd

Cherwell Innovation Centre
77 Heyford Park
Upper Heyford
Oxfordshire
OX25 5HD
UK

Enquiries:

info@everestbiotech.com

Sales:

sales@everestbiotech.com

Tech support:

support@everestbiotech.com

Tel: +44 (0)1869 238326

www.everestbiotech.com

**Research Use Only. Not for
diagnostic or therapeutic use.**

EB07305-T - Goat Anti-Ezrin / villin 2 Antibody - Trial

Size: 20µg specific antibody in 40µl



Target Protein

Principal Names: villin 2 (ezrin), ezrin, VIL2, CVIL, CVL, DKFZp762H157, FLJ26216, MGC1584, cytovillin, villin 2

Official Symbol: EZR

Accession Number(s): NP_003370.2

Human GeneID(s): [7430](#)

Non-Human GeneID(s): 22350 (mouse), 54319 (rat)

Immunogen

Peptide with sequence C-QDYEEKTKKAER, from the internal region of the protein sequence according to NP_003370.2.

Please note the [peptide](#) is available for sale.

Purification and Storage

Purified from goat serum by ammonium sulphate precipitation followed by antigen affinity chromatography using the immunizing peptide.

Supplied at 0.5 mg/ml in Tris saline, 0.02% sodium azide, pH7.3 with 0.5% bovine serum albumin.

Aliquot and store at -20°C. Minimize freezing and thawing.

Applications Tested

Peptide ELISA: antibody detection limit dilution 1:16000.

Western blot: Approx 80kDa band observed in Human Placenta lysates (calculated MW of 69.4kDa according to NP_003370.2). The observed molecular weight corresponds to earlier findings in literature with different antibodies (Zhu et al, Am J Physiol Cell Physiol. 2005 Jun;288(6):C1242-54.; PMID: 15788482). Recommended concentration: 1-3µg/ml.

IHC: Paraffin embedded Human Colon and Kidney. Recommended concentration: 3.75µg/ml.

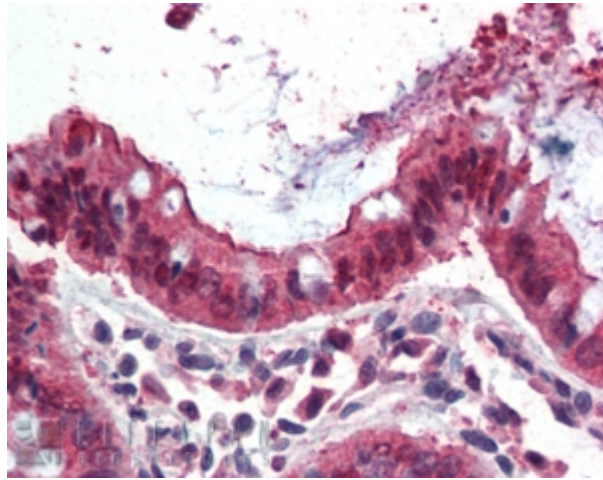
Species Reactivity

Tested: Human

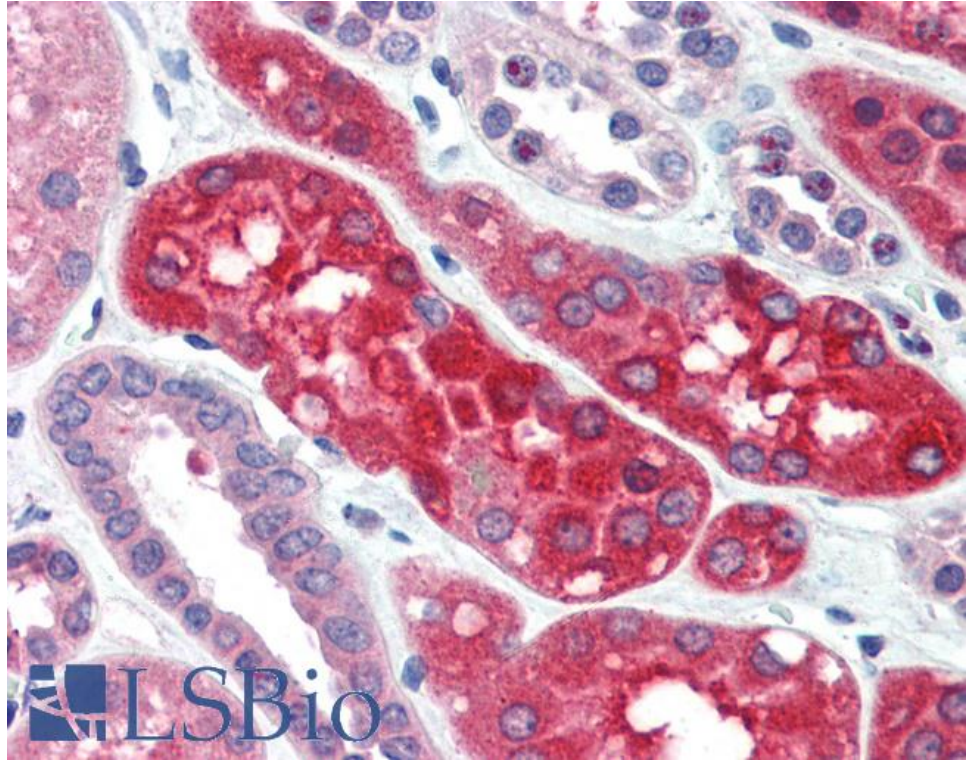
Expected from sequence similarity: Human, Dog



EB07305 (1 μ g/ml) staining of Human Placenta lysate (35 μ g protein in RIPA buffer). Primary incubation was 1 hour. Detected by chemiluminescence.



EB07305 (3.75 μ g/ml) staining of paraffin embedded Human Colon. Steamed antigen retrieval with citrate buffer pH 6, AP-staining.



EB07305 (3.75µg/ml) staining of paraffin embedded Human Kidney. Steamed antigen retrieval with citrate buffer pH 6, AP-staining.