



International Office

Everest Biotech Ltd

Vector Laboratories, Inc.
6737 Mowry Ave
Newark, CA 94560
United States

Customer Service:

customerservice@vectorlabs.com

Technical Service:

technical@vectorlabs.com

Tel: +1 (800) 227-6666

www.everestbiotech.com

**Research Use Only. Not for
diagnostic or therapeutic use.**

EB09489 - Goat Anti-F11R / JAM-A Antibody

Size: 100µg specific antibody in 200µl



Target Protein

Principal Names: F11R, F11 receptor, CD321, JAM, JAM-1, JAM-A, JAM1, JAMA, JCAM, KAT, PAM-1, OTTHUMP00000027880, OTTHUMP00000027881, junctional adhesion molecule 1, junctional adhesion molecule A, platelet F11 receptor, platelet adhesion molecule

Official Symbol: F11R

Accession Number(s): NP_058642.1

Human GeneID(s): [50848](#)

Non-Human GeneID(s): 16456 (mouse), 116479 (rat)

Immunogen

Peptide with sequence C-QPSARSEGEFKQTS, from the C Terminus of the protein sequence according to NP_058642.1.

Please note the [peptide](#) is available for sale.

Purification and Storage

Purified from goat serum by ammonium sulphate precipitation followed by antigen affinity chromatography using the immunizing peptide.

Supplied at 0.5 mg/ml in Tris saline, 0.02% sodium azide, pH7.3 with 0.5% bovine serum albumin.

Aliquot and store at -20°C. Minimize freezing and thawing.

Applications Tested

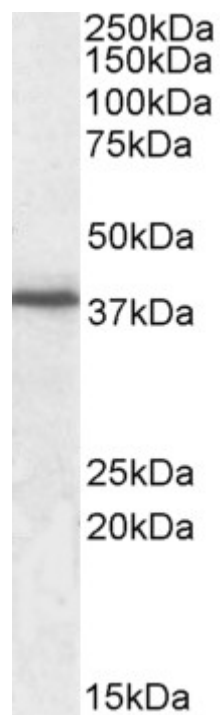
Peptide ELISA: antibody detection limit dilution 1:2000.

Western blot: Approx 38kDa band observed in Human Peripheral Blood Mononucleocyte lysates (calculated MW of 32.6kDa according to NP_058642.1). This molecular weight is routinely observed by other sources. Recommended concentration: 0.3-2µg/ml.

Species Reactivity

Tested: Human

Expected from sequence similarity: Human, Mouse, Rat, Dog, Pig



EB09489 (0.3 μ g/ml) staining of Human Peripheral Blood Mononucleocyte lysate (35 μ g protein in RIPA buffer).
Primary incubation was 1 hour. Detected by chemiluminescence.