



## UK Office

### Everest Biotech Ltd

Cherwell Innovation Centre  
77 Heyford Park  
Upper Heyford  
Oxfordshire  
OX25 5HD  
UK

Enquiries:

[info@everestbiotech.com](mailto:info@everestbiotech.com)

Sales:

[sales@everestbiotech.com](mailto:sales@everestbiotech.com)

Tech support:

[support@everestbiotech.com](mailto:support@everestbiotech.com)

Tel: +44 (0)1869 238326

[www.everestbiotech.com](http://www.everestbiotech.com)

**Research Use Only. Not for  
diagnostic or therapeutic use.**

## EB09268 - Goat Anti-F2R / PAR1 Antibody

Size: 100µg specific antibody in 200µl



### Target Protein

**Principal Names:** F2R, coagulation factor II (thrombin) receptor, CF2R, HTR, PAR1, TR, coagulation factor II receptor, protease-activated receptor 1, thrombin receptor

**Official Symbol:** F2R

**Accession Number(s):** NP\_001983.2

**Human GeneID(s):** [2149](#)

### Immunogen

Peptide with sequence C-TRARRPESKATNAT, from the Internal region (near N Terminus) of the protein sequence according to NP\_001983.2.

Please note the [peptide](#) is available for sale.

### Purification and Storage

Purified from goat serum by ammonium sulphate precipitation followed by antigen affinity chromatography using the immunizing peptide.

Supplied at 0.5 mg/ml in Tris saline, 0.02% sodium azide, pH7.3 with 0.5% bovine serum albumin.

Aliquot and store at -20°C. Minimize freezing and thawing.

### Applications Tested

**Peptide ELISA:** antibody detection limit dilution 1:64000.

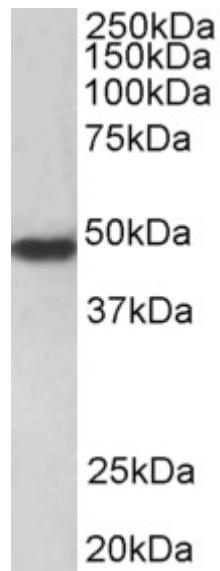
**Western blot:** Approx 48kDa band observed in lysates of cell line HeLa (calculated MW of 47.4kDa according to NP\_001983.2). Recommended concentration: 0.3-1µg/ml.

Primary incubation 1 hour at room temperature.

### Species Reactivity

**Tested:** Human

**Expected from sequence similarity:** Human



EB09268 (0.3 $\mu$ g/ml) staining of HeLa cell lysate (35 $\mu$ g protein in RIPA buffer). Detected by chemiluminescence.