



## UK Office

### Everest Biotech Ltd

Cherwell Innovation Centre  
77 Heyford Park  
Upper Heyford  
Oxfordshire  
OX25 5HD  
UK

Enquiries:

[info@everestbiotech.com](mailto:info@everestbiotech.com)

Sales:

[sales@everestbiotech.com](mailto:sales@everestbiotech.com)

Tech support:

[support@everestbiotech.com](mailto:support@everestbiotech.com)

Tel: +44 (0)1869 238326

Fax: +44 (0)1869 238327

## US Office

### Everest Biotech c/o Abcore

405 Maple Street, Suite A106  
Ramona,  
CA 92065  
USA

Inquiries:

[info@everestbiotech.com](mailto:info@everestbiotech.com)

Sales:

[usasales@everestbiotech.com](mailto:usasales@everestbiotech.com)

Tech support:

[support@everestbiotech.com](mailto:support@everestbiotech.com)

Tel: 888-320-4628 (toll-free)

Fax: 888-841-9041

[www.everestbiotech.com](http://www.everestbiotech.com)

**Research Use Only. Not for  
diagnostic or therapeutic use.**

## EB07742 - Goat Anti-FABP2 Antibody

Size: 100µg specific antibody in 200µl



### Target Protein

**Principal Names:** FABP2, fatty acid binding protein 2, intestinal, FABPI, I-FABP, MGC133132, Fatty acid-binding protein, intestinal, intestinal fatty acid binding protein 2, fatty acid-binding protein 2, intestinal-type fatty acid-binding protein

**Official Symbol:** FABP2

**Accession Number(s):** NP\_000125.2

**Human GeneID(s):** [2169](#)

**Non-Human GeneID(s):** 14079 (mouse)

### Immunogen

Peptide with sequence C-EGVEAKRIFKKD, from the C Terminus of the protein sequence according to NP\_000125.2.

Please note the [peptide](#) is available for sale.

### Purification and Storage

Purified from goat serum by ammonium sulphate precipitation followed by antigen affinity chromatography using the immunizing peptide.

Supplied at 0.5 mg/ml in Tris saline, 0.02% sodium azide, pH7.3 with 0.5% bovine serum albumin.

Aliquot and store at -20°C. Minimize freezing and thawing.

### Applications Tested

**Peptide ELISA:** antibody detection limit dilution 1:64000.

**Western blot:** Approx 15-16kDa band observed in Human Ileum and Duodenum lysates (calculated MW of 15.2kDa according to NP\_000125.1). Recommended concentration: 0.001-0.003µg/ml. Primary incubation 1 hour at room temperature.

**IHC:** In paraffin embedded Human Small Intestine shows strong staining of basement membrane and weaker staining of enterocytes. Recommended concentration: 2-3µg/ml.

**Flow Cytometry:** Flow cytometric analysis of A431 cells. Recommended concentration: 10µg/ml.

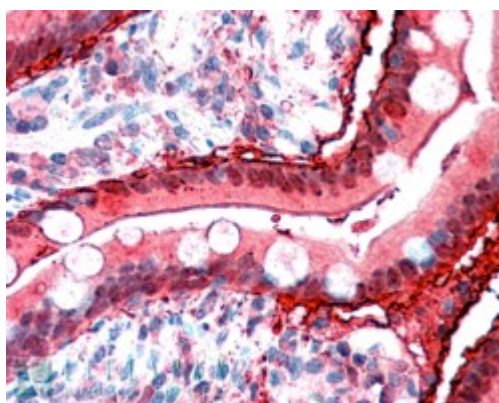
### Species Reactivity

**Tested:** Human

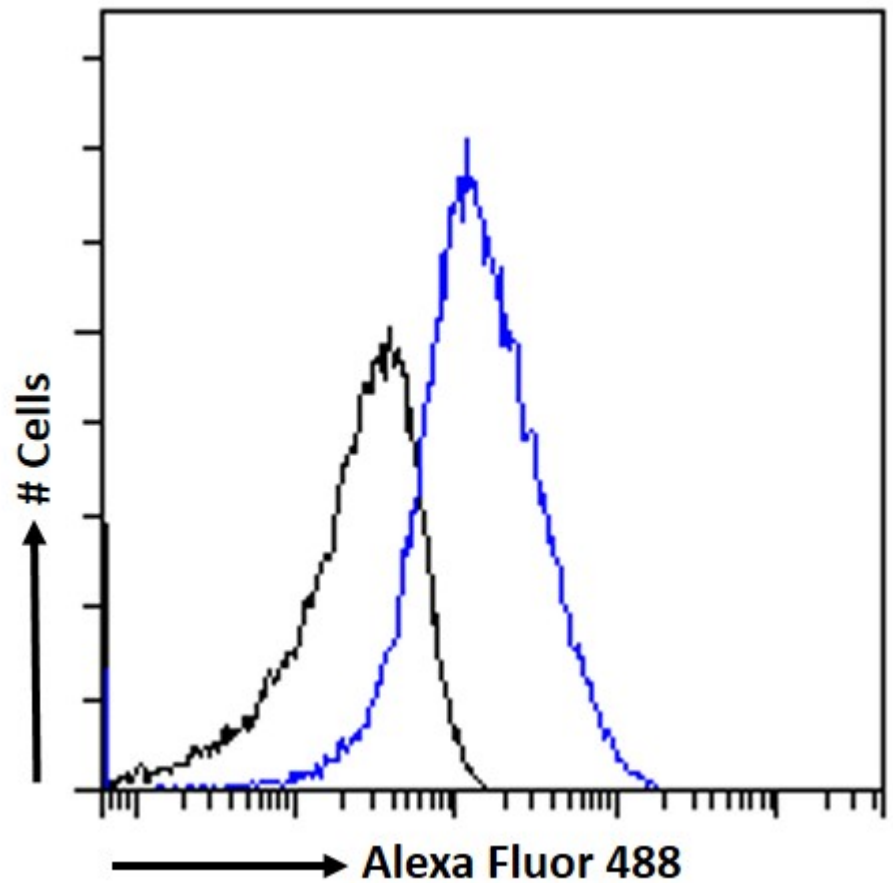
**Expected from sequence similarity:** Human, Mouse, Rat, Dog, Pig, Cow



EB07742 (0.001 $\mu$ g/ml) staining of Human Duodenum (A) and (0.003 $\mu$ g/ml) Ileum (B) lysate (35 $\mu$ g protein in RIPA buffer). Detected by chemiluminescence.



EB07742 (2.5 $\mu$ g/ml) staining of paraffin embedded Human Small Intestine. Steamed antigen retrieval with citrate buffer pH 6, AP-staining.



EB07742 Flow cytometric analysis of paraformaldehyde fixed A431 cells (blue line), permeabilized with 0.5% Triton. Primary incubation 1hr (10ug/ml) followed by Alexa Fluor 488 secondary antibody (1ug/ml). IgG control: Unimmunized goat IgG (black line) followed by Alexa Fluor 488 secondary antibody.