

## UK Office

### Everest Biotech Ltd

Cherwell Innovation Centre  
77 Heyford Park  
Upper Heyford  
Oxfordshire  
OX25 5HD  
UK

Enquiries:

[info@everestbiotech.com](mailto:info@everestbiotech.com)

Sales:

[sales@everestbiotech.com](mailto:sales@everestbiotech.com)

Tech support:

[support@everestbiotech.com](mailto:support@everestbiotech.com)

Tel: +44 (0)1869 238326

[www.everestbiotech.com](http://www.everestbiotech.com)

**Research Use Only. Not for  
diagnostic or therapeutic use.**

## EB12000 - Goat Anti-FABP3 Antibody

Size: 100µg specific antibody in 200µl



### Target Protein

**Principal Names:** FABP3, fatty acid binding protein 3, muscle and heart (mammary-derived growth inhibitor), FABP11, H-FABP, M-FABP, MDGI, O-FABP, Fatty acid-binding protein 3, muscle, fatty acid binding protein 11, fatty acid-binding protein, heart, heart-type fatty acid-binding protein, mammary-derived growth inhibitor, muscle fatty acid-binding protein

**Official Symbol:** FABP3

**Accession Number(s):** NP\_004093.1

**Human GeneID(s):** [2170](#)

### Immunogen

Peptide with sequence C-PTTIEKNGDILTLK, from the internal region of the protein sequence according to NP\_004093.1.

Please note the [peptide](#) is available for sale.

### Purification and Storage

Purified from goat serum by ammonium sulphate precipitation followed by antigen affinity chromatography using the immunizing peptide.

Supplied at 0.5 mg/ml in Tris saline, 0.02% sodium azide, pH7.3 with 0.5% bovine serum albumin.

Aliquot and store at -20°C. Minimize freezing and thawing.

### Applications Tested

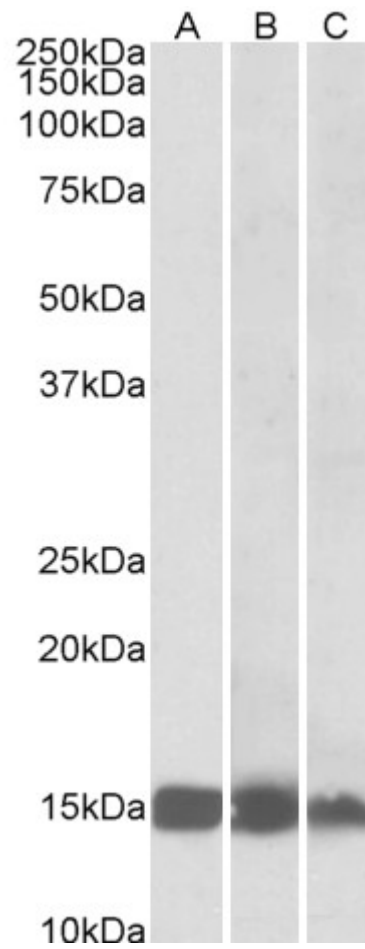
**Peptide ELISA:** antibody detection limit dilution 1:128000.

**Western blot:** Approx 15kDa band observed in Human, Mouse and Rat Heart lysates (calculated MW of 14.9kDa according to NP\_004093.1). Recommended concentration: 0.01-0.03µg/ml.

### Species Reactivity

**Tested:** Human, Mouse, Rat

**Expected from sequence similarity:** Human, Mouse, Rat, Cow



EB12000 (0.01 $\mu$ g/ml) staining of Human (A), Mouse (B) and Rat(C) Heart lysates (35 $\mu$ g protein in RIPA buffer). Primary incubation was 1 hour. Detected by chemiluminescence.