



UK Office

Everest Biotech Ltd

Cherwell Innovation Centre
77 Heyford Park
Upper Heyford
Oxfordshire
OX25 5HD
UK

Enquiries:

info@everestbiotech.com

Sales:

sales@everestbiotech.com

Tech support:

support@everestbiotech.com

Tel: +44 (0)1869 238326

www.everestbiotech.com

**Research Use Only. Not for
diagnostic or therapeutic use.**

EB08049 - Goat Anti-Factor XIIIa (703-717) Antibody

Size: 100µg specific antibody in 200µl



Target Protein

Principal Names: factor XIIIa, F13A1, coagulation factor XIII, A1 polypeptide, RP11-232H4.1, F13A, Coagulation factor XIII A chain, Coagulation factor XIII, A polypeptide, TGase, bA525O21.1 (coagulation factor XIII, A1 polypeptide), coagulation factor XIII A1 subunit

Official Symbol: F13A1

Accession Number(s): NP_000120.2

Human GeneID(s): [2162](#)

Immunogen

Peptide with sequence C-HRKLIASMSSDSLRLH, from the internal region of the protein sequence according to NP_000120.2.

Please note the [peptide](#) is available for sale.

Purification and Storage

Purified from goat serum by ammonium sulphate precipitation followed by antigen affinity chromatography using the immunizing peptide.

Supplied at 0.5 mg/ml in Tris saline, 0.02% sodium azide, pH7.3 with 0.5% bovine serum albumin.

Aliquot and store at -20°C. Minimize freezing and thawing.

Applications Tested

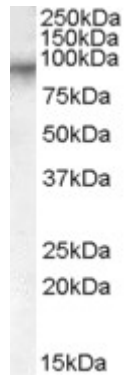
Peptide ELISA: antibody detection limit dilution 1:32000.

Western blot: Approx 90kDa band observed in Human Placenta lysates (calculated MW of 83.3kDa according to NP_000120.2). Recommended concentration: 0.05-0.2µg/ml.

Species Reactivity

Tested: Human

Expected from sequence similarity: Human, Mouse



EB08049 (0.1µg/ml) staining of Human Placenta lysate (35µg protein in RIPA buffer). Primary incubation was 1 hour. Detected by chemiluminescence.