



UK Office

Everest Biotech Ltd

Cherwell Innovation Centre
77 Heyford Park
Upper Heyford
Oxfordshire
OX25 5HD
UK

Enquiries:

info@everestbiotech.com

Sales:

sales@everestbiotech.com

Tech support:

support@everestbiotech.com

Tel: +44 (0)1869 238326

www.everestbiotech.com

**Research Use Only. Not for
diagnostic or therapeutic use.**

EB08576 - Goat Anti-FALL39 precursor Antibody

Size: 100µg specific antibody in 200µl



Target Protein

Principal Names: CAMP, cathelicidin antimicrobial peptide, CAP18, FALL-39, FALL39, HSD26, LL37

Official Symbol: CAMP

Accession Number(s): NP_004336.2

Human GeneID(s): [820](#)

Immunogen

Peptide with sequence KETVCPRTTQQSP, from the internal region of the protein sequence according to NP_004336.2.

Please note the [peptide](#) is available for sale.

Purification and Storage

Purified from goat serum by ammonium sulphate precipitation followed by antigen affinity chromatography using the immunizing peptide.

Supplied at 0.5 mg/ml in Tris saline, 0.02% sodium azide, pH7.3 with 0.5% bovine serum albumin.

Aliquot and store at -20°C. Minimize freezing and thawing.

Applications Tested

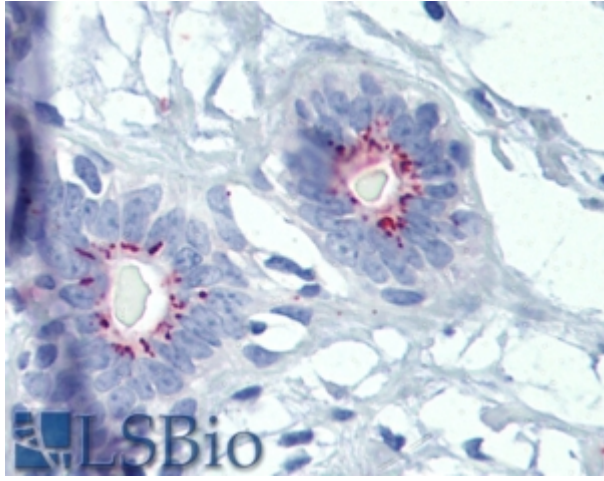
Peptide ELISA: antibody detection limit dilution 1:2000.

IHC: In paraffin embedded Human Breast shows distinct staining at the luminal side of ductal epithelial cells. Recommended concentration, 3-5µg/ml.

Species Reactivity

Tested: Human

Expected from sequence similarity: Human, Cow



EB08576 (3.8µg/ml) staining of paraffin embedded Human Breast. Steamed antigen retrieval with citrate buffer pH 6, AP-staining.