

UK Office

Everest Biotech Ltd

Cherwell Innovation Centre
77 Heyford Park
Upper Heyford
Oxfordshire
OX25 5HD
UK

Enquiries:

info@everestbiotech.com

Sales:

sales@everestbiotech.com

Tech support:

support@everestbiotech.com

Tel: +44 (0)1869 238326

www.everestbiotech.com

**Research Use Only. Not for
diagnostic or therapeutic use.**

EB06113 - Goat Anti-FANCG / XRCC9 Antibody

Size: 100µg specific antibody in 200µl



Target Protein

Principal Names: FANCG, XRCC9, Fanconi anemia, complementation group G, FAG, DNA repair protein XRCC9, X-ray repair, complementing defective, in Chinese hamster, 9, X-ray repair complementing defective repair in Chinese hamster cells 9

Official Symbol: FANCG

Accession Number(s): NP_004620.1

Human GeneID(s): [2189](#)

Immunogen

Peptide with sequence LEEFRTSLPKSCDL, from the C Terminus of the protein sequence according to NP_004620.1.

Please note the [peptide](#) is available for sale.

Purification and Storage

Purified from goat serum by ammonium sulphate precipitation followed by antigen affinity chromatography using the immunizing peptide.

Supplied at 0.5 mg/ml in Tris saline, 0.02% sodium azide, pH7.3 with 0.5% bovine serum albumin.

Aliquot and store at -20°C. Minimize freezing and thawing.

Applications Tested

Peptide ELISA: antibody detection limit dilution 1:32000.

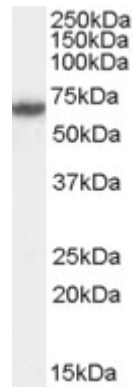
Western blot: Approx 70kDa band observed in lysates of cell line HeLa, and in nuclear lysates of cell line Jurkat (calculated MW of 68.6kDa according to NP_004620.1). In transfected HEK293 transiently expressing FANCG a band of approx. 65kDa is observed. This band is not observed in the non-transfected HEK293. Recommended concentration: 0.3-1µg/ml.

IHC: Paraffin embedded Human Uterus and Spleen. Recommended concentration: 3µg/ml.

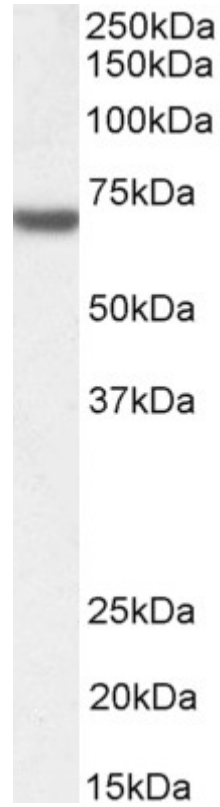
Species Reactivity

Tested: Human

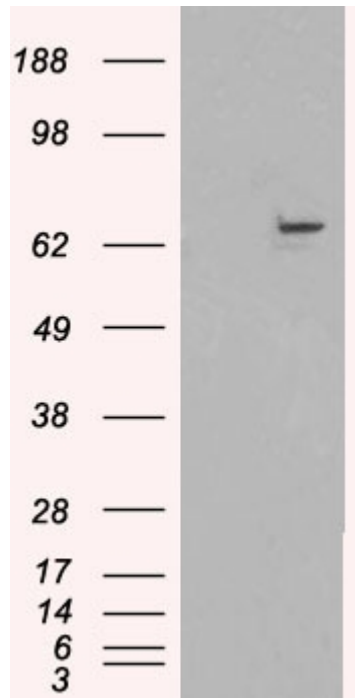
Expected from sequence similarity: Human



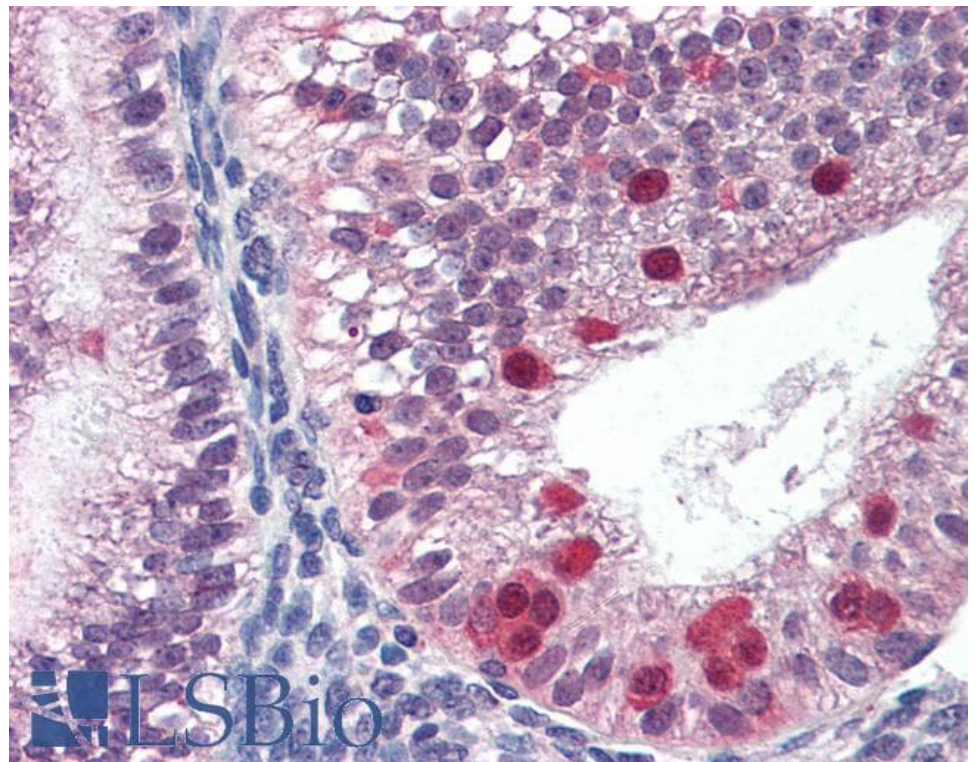
EB06113 (0.5 μ g/ml) staining of HeLa cell lysate (35 μ g protein in RIPA buffer). Primary incubation was 1 hour. Detected by chemiluminescence.



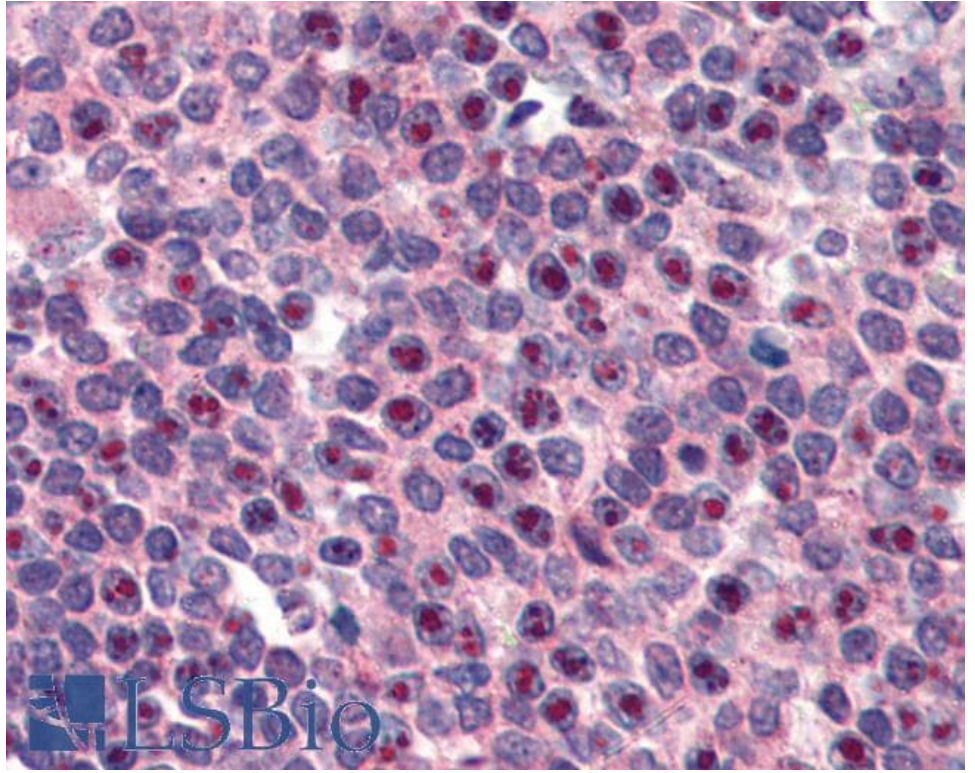
EB06113 (1 μ g/ml) staining of Jurkat nuclear lysate (35 μ g protein in RIPA buffer). Primary incubation was 1 hour. Detected by chemiluminescence.



HEK293 overexpressing FANCG (RC202443) and probed with EB06113 (mock transfection in first lane), tested by Origene.



EB06113 (3 μ g/ml) staining of paraffin embedded Human Uterus. Steamed antigen retrieval with citrate buffer pH 6, AP-staining.



EB06113 (3µg/ml) staining of paraffin embedded Human Spleen. Steamed antigen retrieval with citrate buffer pH 6, AP-staining.