



## International Office

### Everest Biotech Ltd

Vector Laboratories, Inc.  
6737 Mowry Ave  
Newark, CA 94560  
United States

Customer Service:

[customerservice@vectorlabs.com](mailto:customerservice@vectorlabs.com)

Technical Service:

[technical@vectorlabs.com](mailto:technical@vectorlabs.com)

Tel: +1 (800) 227-6666

[www.everestbiotech.com](http://www.everestbiotech.com)

**Research Use Only. Not for  
diagnostic or therapeutic use.**

## EB10141 - Goat Anti-FANCL Antibody

Size: 100µg specific antibody in 200µl



### Target Protein

**Principal Names:** FAAP43, Fanconi anemia, complementation group L, FLJ10335, PHD finger protein 9, PHF9, POG, FANCL

**Official Symbol:** FANCL

**Accession Number(s):** NP\_001108108.1; NP\_060532.2

**Human GeneID(s):** [55120](#)

**Non-Human GeneID(s):** 67030 (mouse), 305600 (rat)

**Important Comments:** This antibody is expected to recognize both isoforms (NP\_001108108.1; NP\_060532.2).

### Immunogen

Peptide with sequence C-QNLKDVLEIDFP, from the internal region of the protein sequence according to NP\_001108108.1; NP\_060532.2.

Please note the [peptide](#) is available for sale.

### Purification and Storage

Purified from goat serum by ammonium sulphate precipitation followed by antigen affinity chromatography using the immunizing peptide.

Supplied at 0.5 mg/ml in Tris saline, 0.02% sodium azide, pH7.3 with 0.5% bovine serum albumin.

Aliquot and store at -20°C. Minimize freezing and thawing.

### Applications Tested

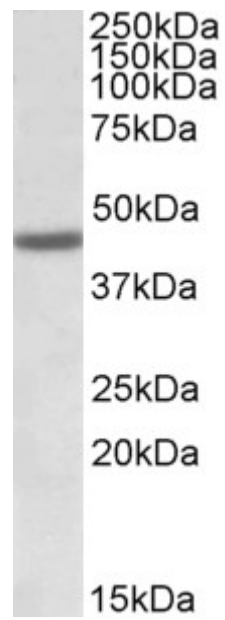
**Peptide ELISA:** antibody detection limit dilution 1:16000.

**Western blot:** Approx 45kDa band observed in Human Bone Marrow lysates (calculated MW of 43.4kDa according to NP\_001108108.1). Recommended concentration: 1-3µg/ml.

### Species Reactivity

**Tested:** Human

**Expected from sequence similarity:** Human, Mouse, Rat, Dog, Cow



EB10141 (1 µg/ml) staining of Human Bone Marrow lysate (35 µg protein in RIPA buffer). Primary incubation was 1 hour. Detected by chemiluminescence.