



UK Office

Everest Biotech Ltd

Cherwell Innovation Centre
77 Heyford Park
Upper Heyford
Oxfordshire
OX25 5HD
UK

Enquiries:

info@everestbiotech.com

Sales:

sales@everestbiotech.com

Tech support:

support@everestbiotech.com

Tel: +44 (0)1869 238326

www.everestbiotech.com

**Research Use Only. Not for
diagnostic or therapeutic use.**

EB06491 - Goat Anti-FBP17 / FNBP1 Antibody

Size: 100µg specific antibody in 200µl



Target Protein

Principal Names: FNBP1, FBP17, KIAA0554, formin binding protein 1, formin-binding protein 17, MGC126804

Official Symbol: FNBP1

Accession Number(s): NP_055848.1

Human GeneID(s): [23048](#)

Immunogen

Peptide with sequence KQLESSKRRFERDC, from the internal region of the protein sequence according to NP_055848.1.

Please note the [peptide](#) is available for sale.

Purification and Storage

Purified from goat serum by ammonium sulphate precipitation followed by antigen affinity chromatography using the immunizing peptide.

Supplied at 0.5 mg/ml in Tris saline, 0.02% sodium azide, pH7.3 with 0.5% bovine serum albumin.

Aliquot and store at -20°C. Minimize freezing and thawing.

Applications Tested

Peptide ELISA: antibody detection limit dilution 1:32000.

Western blot: Approx 70kDa band observed in Human Testis lysates (calculated MW of 71.3kDa according to NP_055848.1). Recommended concentration: 0.25-2µg/ml.

IHC: Paraffin embedded Human Tonsil and Small Intestine. Recommended concentration: 3.75µg/ml.

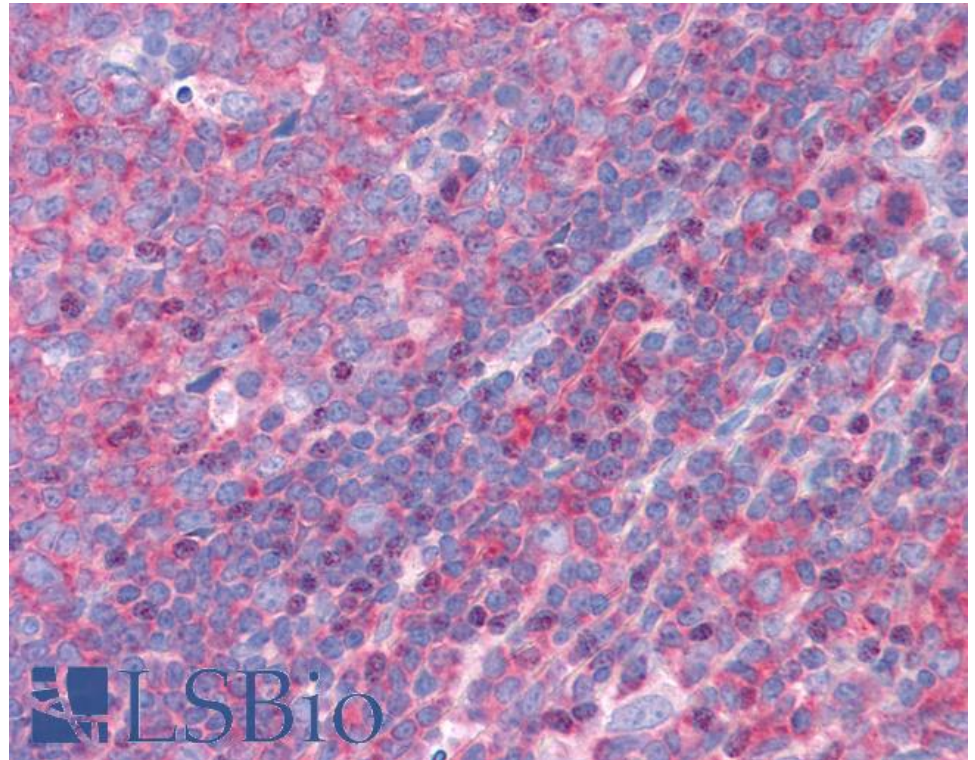
Species Reactivity

Tested: Human

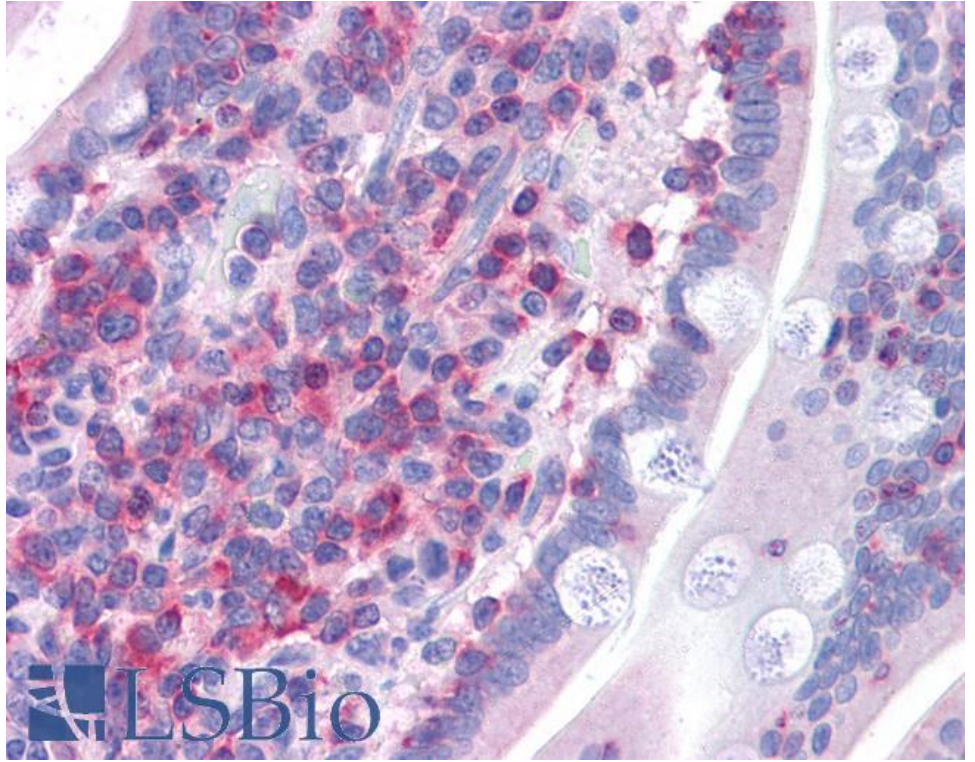
Expected from sequence similarity: Human, Mouse, Rat, Dog, Pig, Cow



EB06491 staining (0.25 μ g/ml) of Human Testis lysate (RIPA buffer, 35 μ g total protein per lane). Primary incubated for 1 hour. Detected by chemiluminescence.



EB06491 (3.75 μ g/ml) staining of paraffin embedded Human Tonsil. Steamed antigen retrieval with citrate buffer pH 6, AP-staining.



EB06491 (3.75µg/ml) staining of paraffin embedded Human Small Intestine. Steamed antigen retrieval with citrate buffer pH 6, AP-staining.