



UK Office

Everest Biotech Ltd

Cherwell Innovation Centre
77 Heyford Park
Upper Heyford
Oxfordshire
OX25 5HD
UK

Enquiries:

info@everestbiotech.com

Sales:

sales@everestbiotech.com

Tech support:

support@everestbiotech.com

Tel: +44 (0)1869 238326

www.everestbiotech.com

**Research Use Only. Not for
diagnostic or therapeutic use.**

EB07392 - Goat Anti-FBXL3 Antibody

Size: 100µg specific antibody in 200µl



Target Protein

Principal Names: FBXL3, F-box and leucine-rich repeat protein 3, FBL3, FBL3A, FBXL3A, F-box and leucine-rich repeat protein 3A, F-box protein Fbl3a

Official Symbol: FBXL3

Accession Number(s): NP_036290.1

Human GeneID(s): [26224](#)

Immunogen

Peptide with sequence KRGGRSDRNSSEE-C, from the N Terminus of the protein sequence according to NP_036290.1.

Please note the [peptide](#) is available for sale.

Purification and Storage

Purified from goat serum by ammonium sulphate precipitation followed by antigen affinity chromatography using the immunizing peptide.

Supplied at 0.5 mg/ml in Tris saline, 0.02% sodium azide, pH7.3 with 0.5% bovine serum albumin.

Aliquot and store at -20°C. Minimize freezing and thawing.

Applications Tested

Peptide ELISA: antibody detection limit dilution 1:32000.

Western blot: Approx 50-55kDa band observed in Human Adipose lysates (calculated MW of 48.7kDa according to NP_036290.1). Recommended concentration: 1-3µg/ml.

IHC: Paraffin embedded Human Thyroid. Recommended concentration: 5µg/ml.

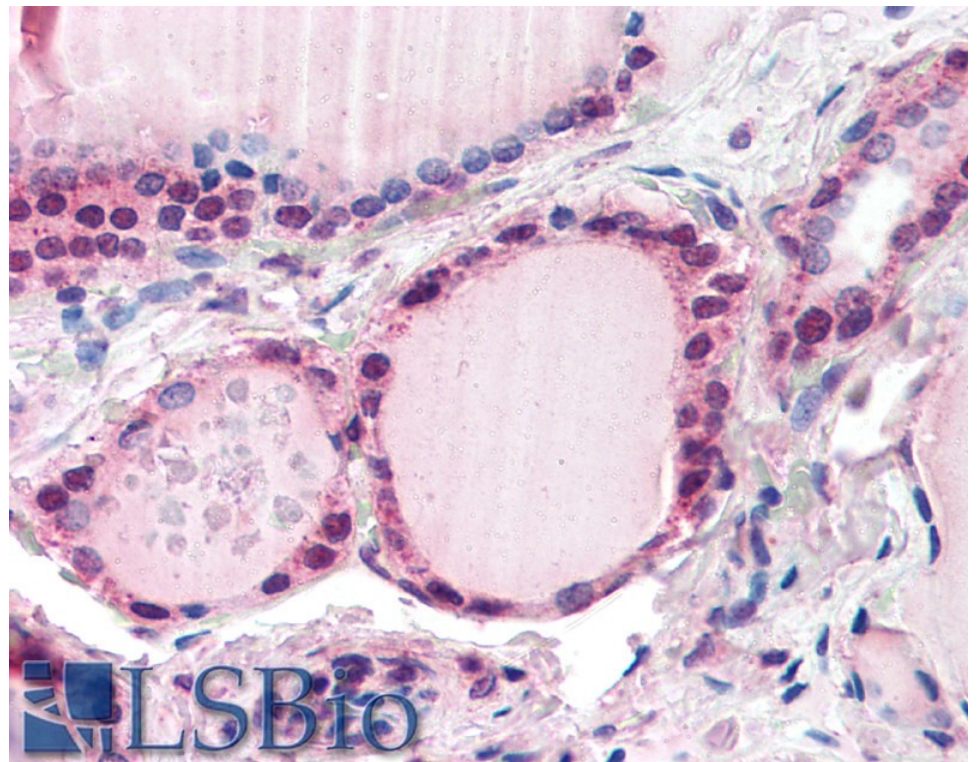
Species Reactivity

Tested: Human

Expected from sequence similarity: Human, Mouse, Rat, Dog, Pig



EB07392 (1µg/ml) staining of Human Adipose lysate (35µg protein in RIPA buffer). Primary incubation was 1 hour. Detected by chemiluminescence.



EB07392 (5µg/ml) staining of paraffin embedded Human Thyroid. Steamed antigen retrieval with citrate buffer pH 6, AP-staining.