

## UK Office

### Everest Biotech Ltd

Cherwell Innovation Centre  
77 Heyford Park  
Upper Heyford  
Oxfordshire  
OX25 5HD  
UK

Enquiries:

[info@everestbiotech.com](mailto:info@everestbiotech.com)

Sales:

[sales@everestbiotech.com](mailto:sales@everestbiotech.com)

Tech support:

[support@everestbiotech.com](mailto:support@everestbiotech.com)

Tel: +44 (0)1869 238326

[www.everestbiotech.com](http://www.everestbiotech.com)

**Research Use Only. Not for  
diagnostic or therapeutic use.**

## EB06064 - Goat Anti-FBXW2 Antibody

Size: 100µg specific antibody in 200µl



### Target Protein

**Principal Names:** FBXW2, F-box and WD-40 domain protein 2, FBW2, Fwd2, MGC117371, Md6, F-box protein Fbw2, F-box and WD repeat domain containing 2

**Official Symbol:** FBXW2

**Accession Number(s):** NP\_036296.2

**Human GeneID(s):** [26190](#)

### Immunogen

Peptide with sequence C-KRGSSFLAGEHPG, from the C Terminus of the protein sequence according to NP\_036296.2.

Please note the [peptide](#) is available for sale.

### Purification and Storage

Purified from goat serum by ammonium sulphate precipitation followed by antigen affinity chromatography using the immunizing peptide.

Supplied at 0.5 mg/ml in Tris saline, 0.02% sodium azide, pH7.3 with 0.5% bovine serum albumin.

Aliquot and store at -20°C. Minimize freezing and thawing.

### Applications Tested

**Peptide ELISA:** antibody detection limit dilution 1:128000.

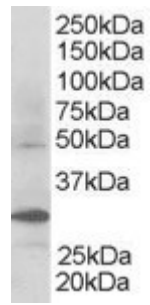
**Western blot:** Approx 48kDa band observed in Human Kidney lysates (calculated MW of 48.0kDa according to NP\_036296.1). Recommended concentration: 0.3-1.5µg/ml. A stronger band of unknown identity was also consistently observed at appr. 30kDa - both bands were successfully blocked by incubation with the immunising peptide.

**IHC:** In paraffin embedded Human Kidney, shows cytoplasmic staining of epithelial cells in some renal tubules. Recommended concentration, 2-3µg/ml. An anonymous customer found positive results in IHC on Mouse kidney tissue. An anonymous customer found positive results in IHC on Rat kidney tissue.

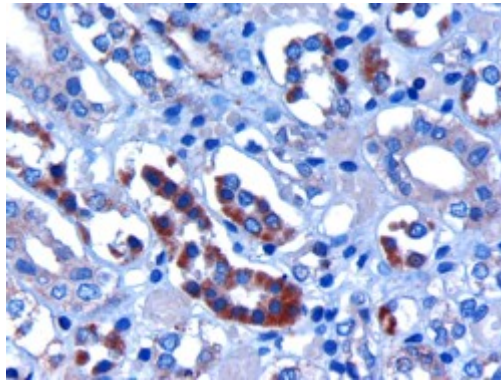
### Species Reactivity

**Tested:** Human, Mouse, Rat

**Expected from sequence similarity:** Human, Mouse, Rat, Dog, Pig, Cow



EB06064 staining (0.3 $\mu$ g/ml) of Human Kidney lysate (RIPA buffer, 30 $\mu$ g total protein per lane). Primary incubated for 1 hour. Detected by western blot using chemiluminescence.



EB06064 (3 $\mu$ g/ml) staining of paraffin embedded Human Kidney. Microwaved antigen retrieval with citrate buffer pH 6, HRP-staining.