

UK Office

Everest Biotech Ltd

Cherwell Innovation Centre
77 Heyford Park
Upper Heyford
Oxfordshire
OX25 5HD
UK

Enquiries:

info@everestbiotech.com

Sales:

sales@everestbiotech.com

Tech support:

support@everestbiotech.com

Tel: +44 (0)1869 238326

www.everestbiotech.com

**Research Use Only. Not for
diagnostic or therapeutic use.**

EB12554 - Goat Anti-FCER1A (aa177-189) Antibody

Size: 100µg specific antibody in 200µl



Target Protein

Principal Names: FCER1A, Fc fragment of IgE, high affinity I, receptor for, alpha polypeptide, FCE1A, FcERI, Fc IgE receptor, alpha polypeptide, Fc epsilon RI alpha-chain, Fc-epsilon RI-alpha, high affinity immunoglobulin epsilon receptor alpha-subunit, high affinity immunoglobulin epsilon receptor subunit alpha, igE Fc receptor subunit alpha, immunoglobulin E receptor, high-affinity, of mast cells, alpha polypeptide

Official Symbol: FCER1A

Accession Number(s): NP_001992.1

Human GeneID(s): [2205](#)

Immunogen

Peptide with sequence C-TGKVVQLDYESEF, from the internal region of the protein sequence according to NP_001992.1.

Please note the [peptide](#) is available for sale.

Purification and Storage

Purified from goat serum by ammonium sulphate precipitation followed by antigen affinity chromatography using the immunizing peptide.

Supplied at 0.5 mg/ml in Tris saline, 0.02% sodium azide, pH7.3 with 0.5% bovine serum albumin.

Aliquot and store at -20°C. Minimize freezing and thawing.

Applications Tested

Peptide ELISA: antibody detection limit dilution 1:128000.

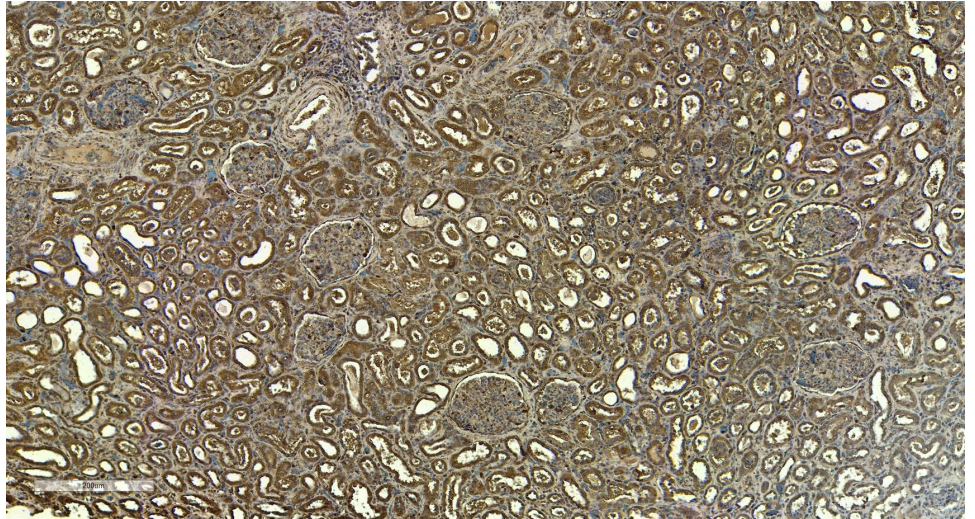
Western blot: Preliminary testing showed a band at approx. 55kDa in Human Lung lysate, and approx. 50kDa in Human Heart lysate after 3µg/ml antibody staining (calculated MW of 29.6kDa according to NP_001992.1). These molecular weights are observed by other commercial sources, and were blocked by incubation with the immunizing peptide. Primary incubation 1 hour at room temperature.

IHC: Paraffin embedded Human Kidney. Recommended concentration: 6µg/ml.

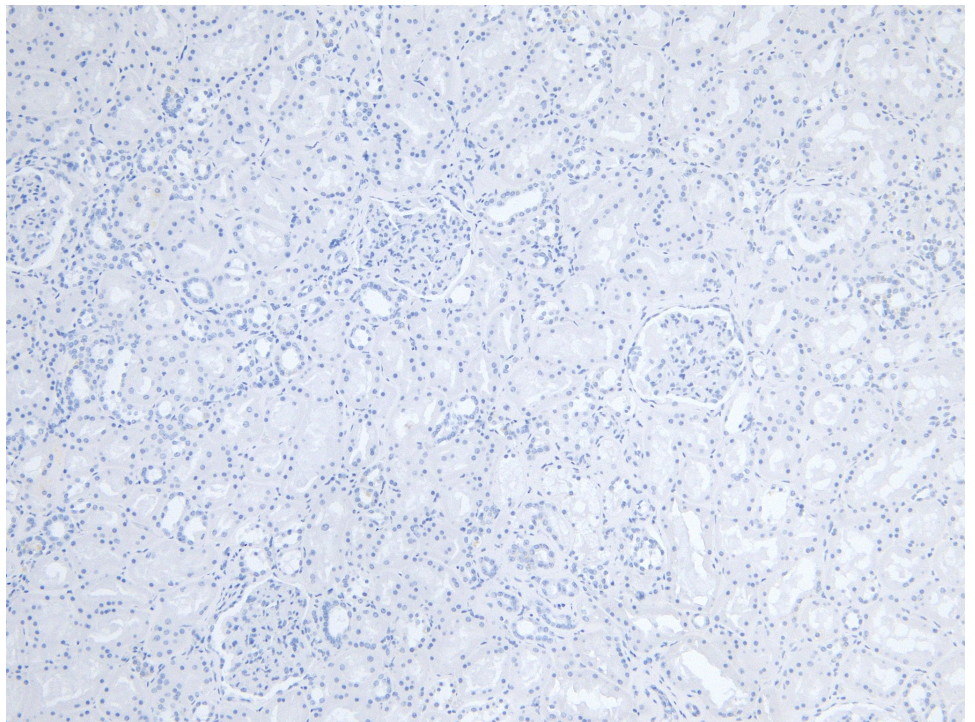
Species Reactivity

Tested: Human

Expected from sequence similarity: Human



EB12554 (6 μ g/ml) staining of paraffin embedded Human Kidney. Heat induced antigen retrieval with citrate buffer pH 6, HRP-staining.



EB12554 Negative Control showing staining of paraffin embedded Human Kidney, with no primary antibody.