



## International Office

### Everest Biotech Ltd

Vector Laboratories, Inc.  
6737 Mowry Ave  
Newark, CA 94560  
United States

Customer Service:

[customerservice@vectorlabs.com](mailto:customerservice@vectorlabs.com)

Technical Service:

[technical@vectorlabs.com](mailto:technical@vectorlabs.com)

Tel: +1 (800) 227-6666

[www.everestbiotech.com](http://www.everestbiotech.com)

**Research Use Only. Not for  
diagnostic or therapeutic use.**

## EB12554 - Goat Anti-FCER1A (aa177-189) Antibody

Size: 100µg specific antibody in 200µl



### Target Protein

**Principal Names:** FCER1A, Fc fragment of IgE, high affinity I, receptor for, alpha polypeptide, FCE1A, FcERI, Fc IgE receptor, alpha polypeptide, Fc epsilon RI alpha-chain, Fc-epsilon RI-alpha, high affinity immunoglobulin epsilon receptor alpha-subunit, high affinity immunoglobulin epsilon receptor subunit alpha, IgE Fc receptor subunit alpha, immunoglobulin E receptor, high-affinity, of mast cells, alpha polypeptide

**Official Symbol:** FCER1A

**Accession Number(s):** NP\_001992.1

**Human GeneID(s):** [2205](#)

### Immunogen

Peptide with sequence C-TGKVVQLDYESEP, from the internal region of the protein sequence according to NP\_001992.1.

Please note the [peptide](#) is available for sale.

### Purification and Storage

Purified from goat serum by ammonium sulphate precipitation followed by antigen affinity chromatography using the immunizing peptide.

Supplied at 0.5 mg/ml in Tris saline, 0.02% sodium azide, pH7.3 with 0.5% bovine serum albumin.

Aliquot and store at -20°C. Minimize freezing and thawing.

### Applications Tested

**Peptide ELISA:** antibody detection limit dilution 1:128000.

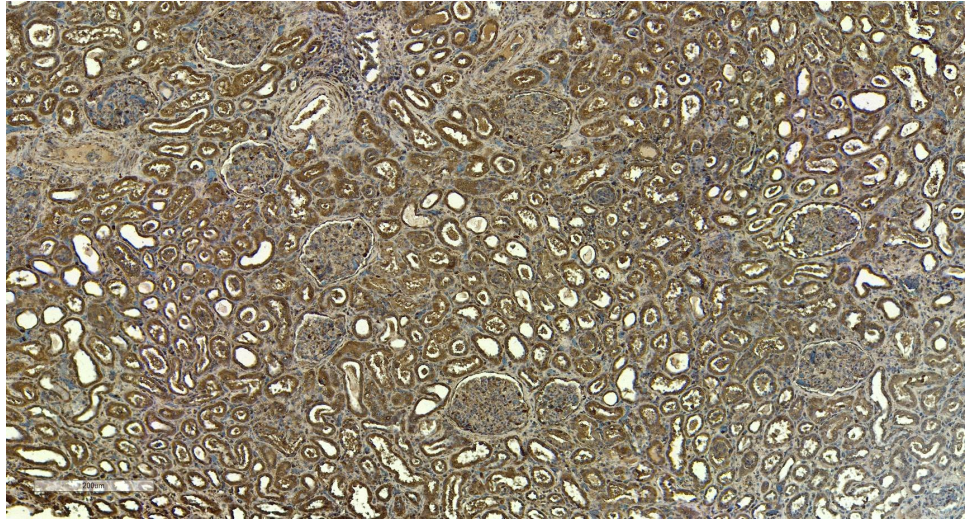
**Western blot:** Preliminary testing showed a band at approx. 55kDa in Human Lung lysate, and approx. 50kDa in Human Heart lysate after 3µg/ml antibody staining (calculated MW of 29.6kDa according to NP\_001992.1). These molecular weights are observed by other commercial sources, and were blocked by incubation with the immunizing peptide. Primary incubation 1 hour at room temperature.

**IHC:** Paraffin embedded Human Kidney. Recommended concentration: 6µg/ml.

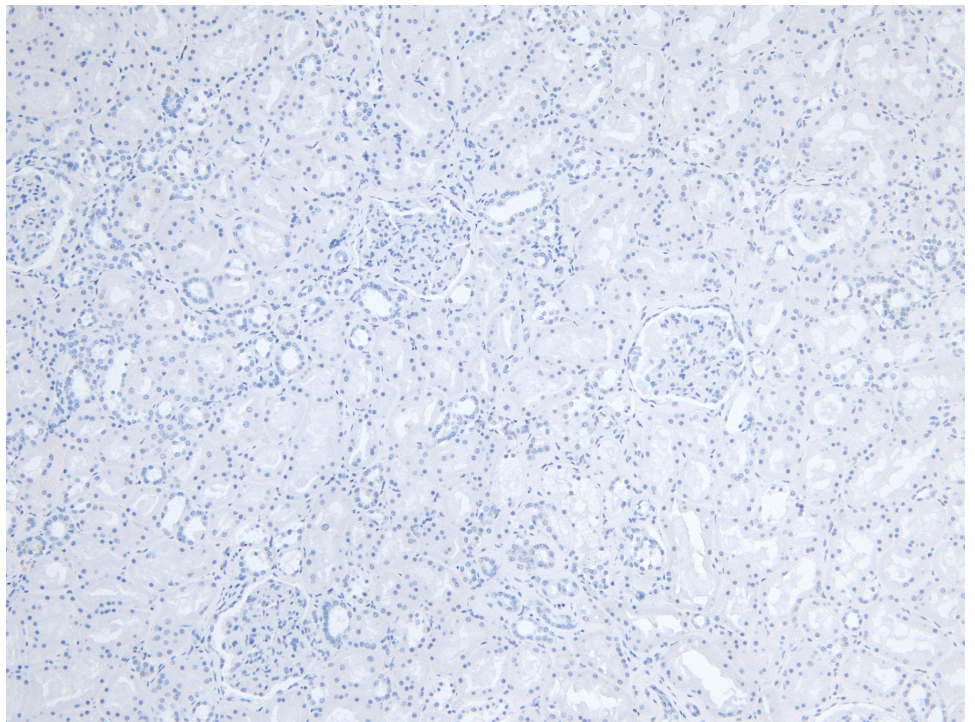
### Species Reactivity

**Tested:** Human

**Expected from sequence similarity:** Human



EB12554 (6 $\mu$ g/ml) staining of paraffin embedded Human Kidney. Heat induced antigen retrieval with citrate buffer pH 6, HRP-staining.



EB12554 Negative Control showing staining of paraffin embedded Human Kidney, with no primary antibody.