



## International Office

### Everest Biotech Ltd

Vector Laboratories, Inc.  
6737 Mowry Ave  
Newark, CA 94560  
United States

Customer Service:

[customerservice@vectorlabs.com](mailto:customerservice@vectorlabs.com)

Technical Service:

[technical@vectorlabs.com](mailto:technical@vectorlabs.com)

Tel: +1 (800) 227-6666

[www.everestbiotech.com](http://www.everestbiotech.com)

**Research Use Only. Not for  
diagnostic or therapeutic use.**

## EB12555 - Goat Anti-FCGR1A/CD64 Antibody

Size: 100µg specific antibody in 200µl



### Target Protein

**Principal Names:** FCER1A, Fc fragment of IgE, high affinity I, receptor for, alpha polypeptide, FCE1A, FcERI, Fc IgE receptor, alpha polypeptide, Fc epsilon RI alpha-chain, Fc-epsilon RI-alpha, high affinity immunoglobulin epsilon receptor alpha-subunit, high affinity immunoglobulin epsilon receptor subunit alpha, IgE Fc receptor subunit alpha, immunoglobulin E receptor, high-affinity, of mast cells, alpha polypeptide

**Official Symbol:** FCGR1A

**Accession Number(s):** NP\_000557.1; NP\_001365740.1; NP\_001365737.1

**Human GeneID(s):** [2209](#)

### Immunogen

Peptide with sequence C-SKTLRGRNTSSEYQ, from the internal region of the protein sequence according to NP\_000557.1; NP\_001365740.1; NP\_001365737.1.

Please note the [peptide](#) is available for sale.

### Purification and Storage

Purified from goat serum by ammonium sulphate precipitation followed by antigen affinity chromatography using the immunizing peptide.

Supplied at 0.5 mg/ml in Tris saline, 0.02% sodium azide, pH7.3 with 0.5% bovine serum albumin.

Aliquot and store at -20°C. Minimize freezing and thawing.

### Applications Tested

**Peptide ELISA:** antibody detection limit dilution 1:128000.

**Western blot:** Approx. 45kDa band observed in lysates of cell line U937, approx. 48+55kDa in Human Liver lysates, and approx. 28+48kDa in Human Tonsil lysates (calculated MW of 42.6kDa according to NP\_000557.1 and 31.0kDa according to NP\_001365740.1; NP\_001365737.1). All bands were successfully blocked by incubation with the immunizing peptide Recommended concentration: 0.01-0.5µg/ml. Primary incubation 1 hour at room temperature.

**Flow Cytometry:** Flow cytometric analysis of U937 cells. Recommended concentration: 10ug/ml.

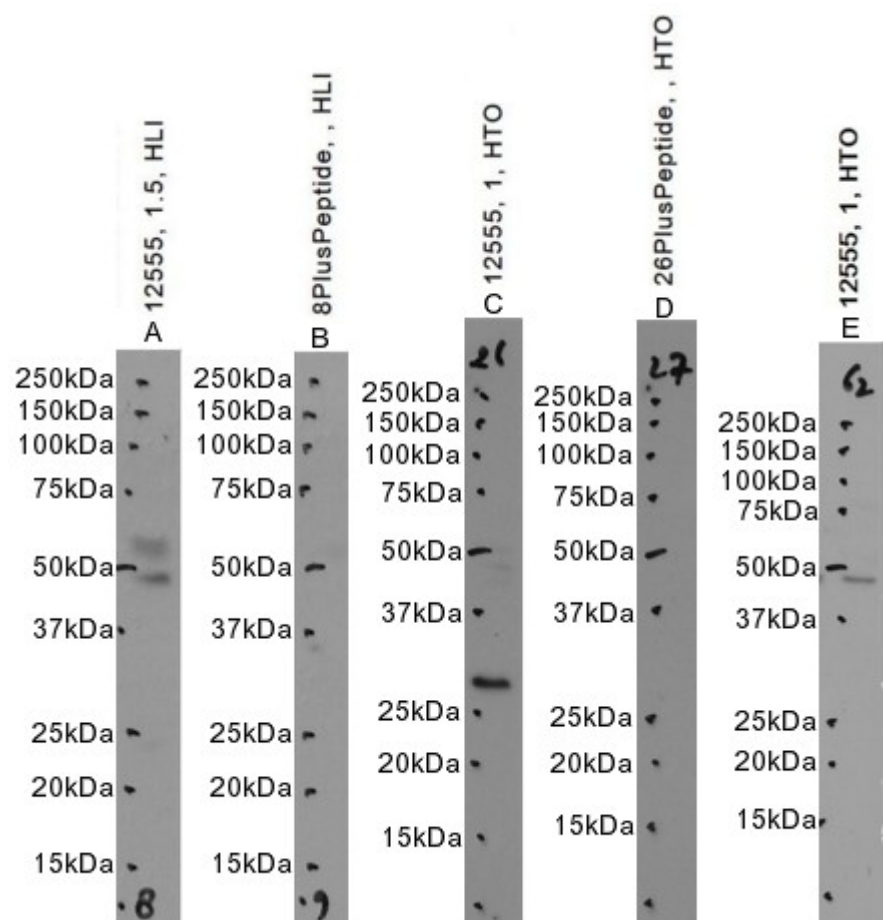
### Species Reactivity

**Tested:** Human

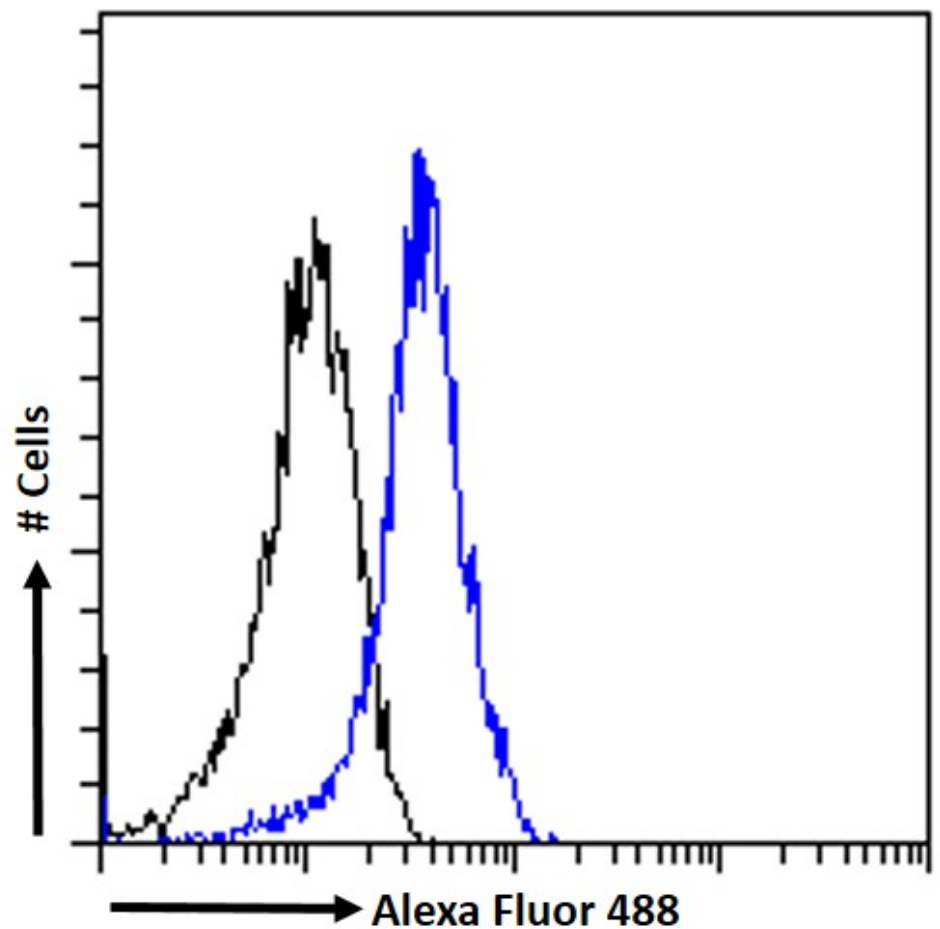
**Expected from sequence similarity:** Human



EB12555 optimised QC. Primary incubation 1 hour at room temperature.  
 Image A: U937 cell lysate at primary Ab concentration 1ug/ml. (Loaded 35µg protein in RIPA buffer, per lane). Detected by chemiluminescence.



EB12555 optimised QC. Primary incubation 1 hour at room temperature.  
Images A+B: Human Liver lysate + peptide at primary Ab concentration 1.5ug/ml, Images  
C+D: Human Tonsil lysate 1 + peptide at primary Ab concentration 1ug/ml, Image E:  
Human Tonsil lysate 2 at primary Ab concentration 1ug/ml. (Loaded 35µg protein in RIPA  
buffer, per lane). Detected by chemiluminescence.



EB12555 Flow cytometric analysis of paraformaldehyde fixed U937 cells (blue line) permeabilized with 0.5% Triton. Primary incubation 1hr (10ug/ml) followed by Alexa Fluor 488® conjugated secondary antibody (1ug/ml).  
IgG control: Unimmunized goat IgG (black line) followed by Alexa Fluor 488 secondary antibody.