



International Office

Everest Biotech Ltd

Vector Laboratories, Inc.
6737 Mowry Ave
Newark, CA 94560
United States

Customer Service:

customerservice@vectorlabs.com

Technical Service:

technical@vectorlabs.com

Tel: +1 (800) 227-6666

www.everestbiotech.com

**Research Use Only. Not for
diagnostic or therapeutic use.**

EB05485 - Goat Anti-FEM1A / APRAP Antibody

Size: 100µg specific antibody in 200µl



Target Protein

Principal Names: FEM1A, fem-1 homolog a (C. elegans), EPRAP, fem-1 homolog a, prostaglandin E receptor 4-associated protein, DKFZp762M136

Official Symbol: FEM1A

Accession Number(s): NP_061178.1

Human GeneID(s): [55527](#)

Immunogen

Peptide with sequence C-GFIPEDLEAFIELH, from the C Terminus of the protein sequence according to NP_061178.1.

Please note the [peptide](#) is available for sale.

Purification and Storage

Purified from goat serum by ammonium sulphate precipitation followed by antigen affinity chromatography using the immunizing peptide.

Supplied at 0.5 mg/ml in Tris saline, 0.02% sodium azide, pH7.3 with 0.5% bovine serum albumin.

Aliquot and store at -20°C. Minimize freezing and thawing.

Applications Tested

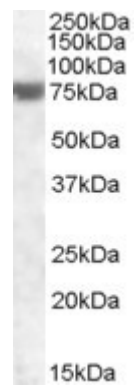
Peptide ELISA: antibody detection limit dilution 1:4000.

Western blot: Approx. 73.6kDa band observed in Human Heart lysates (calculated MW of 73.6kDa according to NP_061178.1). Recommended concentration: 1-3µg/ml.

Species Reactivity

Tested: Human

Expected from sequence similarity: Human, Dog, Cow



EB05485 (1µg/ml) staining of Human Heart lysate (35µg protein in RIPA buffer). Primary incubation was 1 hour.
Detected by chemiluminescence.