



## UK Office

### Everest Biotech Ltd

Cherwell Innovation Centre  
77 Heyford Park  
Upper Heyford  
Oxfordshire  
OX25 5HD  
UK

Enquiries:

[info@everestbiotech.com](mailto:info@everestbiotech.com)

Sales:

[sales@everestbiotech.com](mailto:sales@everestbiotech.com)

Tech support:

[support@everestbiotech.com](mailto:support@everestbiotech.com)

Tel: +44 (0)1869 238326

Fax: +44 (0)1869 238327

## US Office

### Everest Biotech c/o Abcore

405 Maple Street, Suite A106  
Ramona,  
CA 92065  
USA

Inquiries:

[info@everestbiotech.com](mailto:info@everestbiotech.com)

Sales:

[usasales@everestbiotech.com](mailto:usasales@everestbiotech.com)

Tech support:

[support@everestbiotech.com](mailto:support@everestbiotech.com)

Tel: 888-320-4628 (toll-free)

Fax: 888-841-9041

[www.everestbiotech.com](http://www.everestbiotech.com)

**Research Use Only. Not for  
diagnostic or therapeutic use.**

## EB07508 - Goat Anti-FEZ1 / Zygin 1 Antibody

Size: 100µg specific antibody in 200µl



### Target Protein

**Principal Names:** FEZ1, zygin 1, fasciculation and elongation protein zeta 1 (zygin I)

**Official Symbol:** FEZ1

**Accession Number(s):** NP\_005094.1

**Human GeneID(s):** [9638](#)

**Non-Human GeneID(s):** 235180 (mouse), 81730 (rat)

**Important Comments:** This antibody is expected to recognize isoform 1 (NP\_005094.1) only.

### Immunogen

Peptide with sequence C-QNKQKEQRELMKK, from the internal region of the protein sequence according to NP\_005094.1.

Please note the [peptide](#) is available for sale.

### Purification and Storage

Purified from goat serum by ammonium sulphate precipitation followed by antigen affinity chromatography using the immunizing peptide.

Supplied at 0.5 mg/ml in Tris saline, 0.02% sodium azide, pH7.3 with 0.5% bovine serum albumin.

Aliquot and store at -20°C. Minimize freezing and thawing.

### Applications Tested

**Peptide ELISA:** antibody detection limit dilution 1:64000.

**Western blot:** Approx 75kDa band observed in lysates of cell line Kelly, and in Rat Brain lysates (calculated MW of 45.1kDa according to human NP\_005094.1 and 45.2kDa according to Rat NP\_112328.1). This molecular weight is routinely observed by other sources and was successfully blocked by incubation with the immunising peptide.

Recommended concentration: 0.1-0.3g/ml. Primary incubation 1 hour at room temperature.

**IHC:** Paraffin embedded Human Brain (Cerebellum). Recommended concentration: 5-8µg/ml.

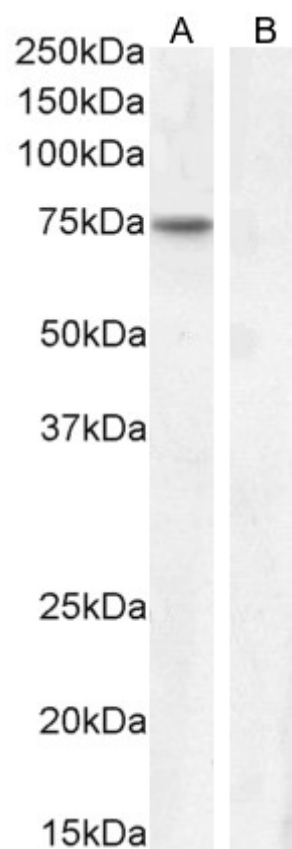
### Species Reactivity

**Tested:** Human, Rat

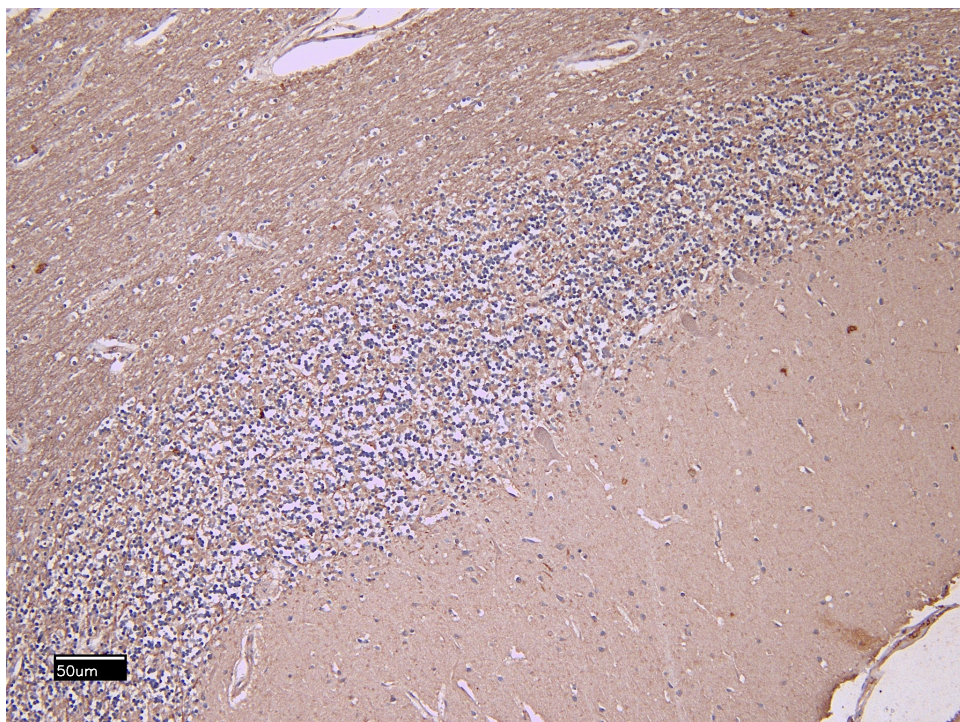
**Expected from sequence similarity:** Human, Mouse, Rat, Dog



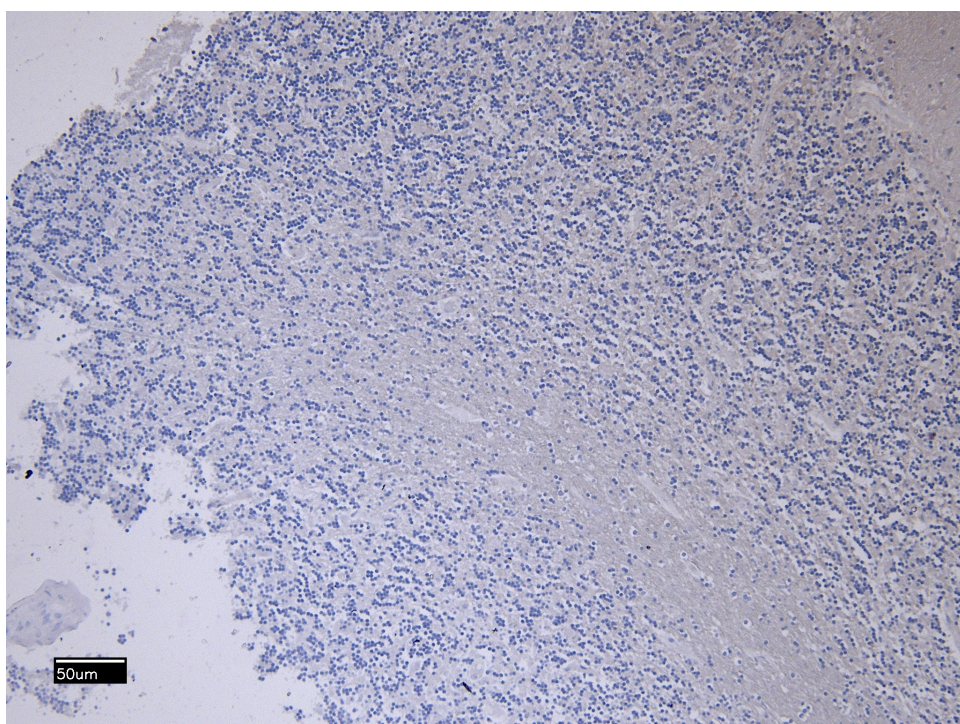
EB07508 (0.1µg/ml) staining of Kelly cell lysate (A) + Peptide (B) (35µg protein in RIPA buffer). Detected by chemiluminescence.



EB07508 (0.1µg/ml) staining of Rat Brain lysate (A) + Peptide (B) (35µg protein in RIPA buffer). Detected by chemiluminescence.



EB07508 (5µg/ml) staining of paraffin embedded Human Cerebellum. Heat induced antigen retrieval with citrate buffer pH 6, HRP-staining.



EB07508 Negative Control showing staining of paraffin embedded Human Cerebellum, with no primary antibody.