



UK Office

Everest Biotech Ltd

Cherwell Innovation Centre
77 Heyford Park
Upper Heyford
Oxfordshire
OX25 5HD
UK

Enquiries:

info@everestbiotech.com

Sales:

sales@everestbiotech.com

Tech support:

support@everestbiotech.com

Tel: +44 (0)1869 238326

Fax: +44 (0)1869 238327

US Office

Everest Biotech c/o Abcore

405 Maple Street, Suite A106
Ramona,
CA 92065
USA

Inquiries:

info@everestbiotech.com

Sales:

usasales@everestbiotech.com

Tech support:

support@everestbiotech.com

Tel: 888-320-4628 (toll-free)

Fax: 888-841-9041

www.everestbiotech.com

**Research Use Only. Not for
diagnostic or therapeutic use.**

EB08456 - Goat Anti-FGFR2 Antibody

Size: 100µg specific antibody in 200µl



Target Protein

Principal Names: FGFR2, fibroblast growth factor receptor 2 (bacteria-expressed kinase, keratinocyte growth factor receptor, craniofacial dysostosis 1, Crouzon syndrome, Pfeiffer syndrome, Jackson-Weiss syndrome), BEK, BFR-1, CD332, CEK3, CFD1, ECT1, JWS, K-SAM

Official Symbol: FGFR2

Accession Number(s): NP_000132.3; NP_075259.4; NP_001138385.1;
NP_001138386.1; NP_001138387.1; NP_001138388.1; NP_001138390.1;
NP_001138391.1

Human GeneID(s): [2263](#)

Non-Human GeneID(s): 14183 (mouse), 25022 (rat)

Important Comments: This antibody is expected to recognise all reported isoforms except isoform 7 (NP_001138389.1). The immunizing peptide represents part of the extracellular domain.

Immunogen

Peptide with sequence C-GREKEITASPDY, from the internal region of the protein sequence according to NP_000132.3; NP_075259.4; NP_001138385.1;
NP_001138386.1; NP_001138387.1; NP_001138388.1; NP_001138390.1;
NP_001138391.1.

Please note the [peptide](#) is available for sale.

Purification and Storage

Purified from goat serum by ammonium sulphate precipitation followed by antigen affinity chromatography using the immunizing peptide.

Supplied at 0.5 mg/ml in Tris saline, 0.02% sodium azide, pH7.3 with 0.5% bovine serum albumin.

Aliquot and store at -20°C. Minimize freezing and thawing.

Applications Tested

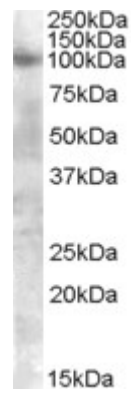
Peptide ELISA: antibody detection limit dilution 1:64000.

Western blot: Approx 100kDa band observed in Human lysates of cell line A549 (calculated MW of 92.0kDa according to NP_000132.1 and of 92.1kDa according to NP_075259.2). Recommended concentration: 0.3-1µg/ml.

Species Reactivity

Tested: Human

Expected from sequence similarity: Human, Mouse, Rat, Dog, Pig, Cow



EB08456 (0.3 μ g/ml) staining of A549 lysate (35 μ g protein in RIPA buffer). Primary incubation was 1 hour.
Detected by chemiluminescence.