



## UK Office

### Everest Biotech Ltd

Cherwell Innovation Centre  
77 Heyford Park  
Upper Heyford  
Oxfordshire  
OX25 5HD  
UK

Enquiries:

[info@everestbiotech.com](mailto:info@everestbiotech.com)

Sales:

[sales@everestbiotech.com](mailto:sales@everestbiotech.com)

Tech support:

[support@everestbiotech.com](mailto:support@everestbiotech.com)

Tel: +44 (0)1869 238326

[www.everestbiotech.com](http://www.everestbiotech.com)

**Research Use Only. Not for  
diagnostic or therapeutic use.**

## EB09652 - Goat Anti-FGL1 / Hepassocin Antibody

Size: 100µg specific antibody in 200µl



### Target Protein

**Principal Names:** FGL1, fibrinogen-like 1, HFREP1, HP-041, LFIRE1, MGC12455, OTTHUMP00000122468, hepassocin, hepatocellular carcinoma-related sequence, hepatocyte-derived fibrinogen-related protein 1

**Official Symbol:** FGL1

**Accession Number(s):** NP\_004458.3

**Human GeneID(s):** [2267](#)

**Non-Human GeneID(s):** 234199 (mouse), 246186 (rat)

**Important Comments:** Reported variants represent identical protein: NP\_963846.1, NP\_963847.1, NP\_671736.2, NP\_004458.3

### Immunogen

Peptide with sequence C-ETRVKQQQVKIKQ, from the internal region of the protein sequence according to NP\_004458.3.

Please note the [peptide](#) is available for sale.

### Purification and Storage

Purified from goat serum by ammonium sulphate precipitation followed by antigen affinity chromatography using the immunizing peptide.

Supplied at 0.5 mg/ml in Tris saline, 0.02% sodium azide, pH7.3 with 0.5% bovine serum albumin.

Aliquot and store at -20°C. Minimize freezing and thawing.

### Applications Tested

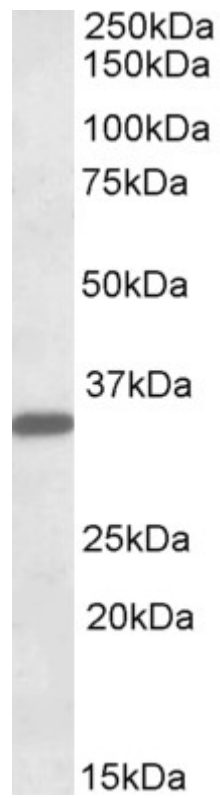
**Peptide ELISA:** antibody detection limit dilution 1:16000.

**Western blot:** Approx 35kDa band observed in Human Liver lysates (calculated MW of 36.4kDa according to NP\_004458.3). Recommended concentration: 0.1-0.3µg/ml.

### Species Reactivity

**Tested:** Human

**Expected from sequence similarity:** Human, Mouse, Rat, Dog, Cow



EB09652 (0.1 $\mu$ g/ml) staining of Human Liver lysate (35 $\mu$ g protein in RIPA buffer). Primary incubation was 1 hour.  
Detected by chemiluminescence.