



International Office

Everest Biotech Ltd

Vector Laboratories, Inc.
6737 Mowry Ave
Newark, CA 94560
United States

Customer Service:

customerservice@vectorlabs.com

Technical Service:

technical@vectorlabs.com

Tel: +1 (800) 227-6666

www.everestbiotech.com

**Research Use Only. Not for
diagnostic or therapeutic use.**

EB05218 - Goat Anti-FGR Antibody

Size: 100µg specific antibody in 200µl



Target Protein

Principal Names: FGR, Gardner-Rasheed feline sarcoma viral (v-fgr) oncogene homolog, SRC2, Oncogene FGR, Gardner-Rasheed feline sarcoma viral (v-fgr) oncogene, FLJ43153, MGC75096, c-fgr, c-src2, p55c-fgr, p58c-fgr, OTTHUMP00000003603, c-fgr protooncogene, c-src-2 proto-oncogene, p55-c-fgr protein, proto-oncogene tyrosine-protein kinase FGR

Official Symbol: FGR

Accession Number(s): NP_001036194.1; NP_001036212.1; NP_005239.1

Human GeneID(s): [2268](#)

Important Comments: This antibody is expected to recognise all three reported isoforms (NP_001036194.1; NP_001036212.1; NP_005239.1).

Immunogen

Peptide with sequence C-TSAEPQYQPGDQT, from the C Terminus of the protein sequence according to NP_001036194.1; NP_001036212.1; NP_005239.1.

Please note the [peptide](#) is available for sale.

Purification and Storage

Purified from goat serum by ammonium sulphate precipitation followed by antigen affinity chromatography using the immunizing peptide.

Supplied at 0.5 mg/ml in Tris saline, 0.02% sodium azide, pH7.3 with 0.5% bovine serum albumin.

Aliquot and store at -20°C. Minimize freezing and thawing.

Applications Tested

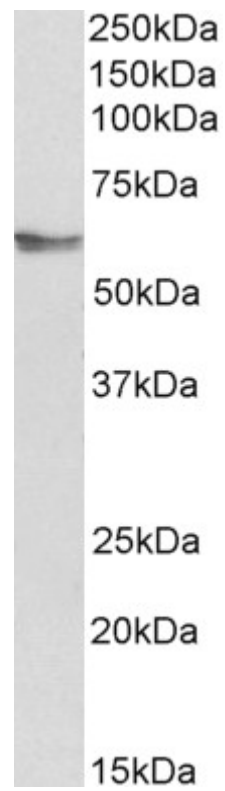
Peptide ELISA: antibody detection limit dilution 1:128000.

Western blot: Approx 60kDa band observed in Human peripheral blood monocytes lysate (calculated MW of 59.5kDa according to NP_001036194.1). Recommended concentration: 0.3-1µg/ml.

Species Reactivity

Tested: Human

Expected from sequence similarity: Human, Mouse, Rat, Dog



EB05218 (0.3 μ g/ml) staining of Human peripheral blood lymphocytes lysate (35 μ g protein in RIPA buffer).
Primary incubation was 1 hour. Detected by chemiluminescence.